

# AlaVar generated report

C:\temp\Data\LC100EC110.dat

File 'C:\temp\Data\LC100EC110.dat' created on 11.04.2018 06:48:52

Column # 1 was processed

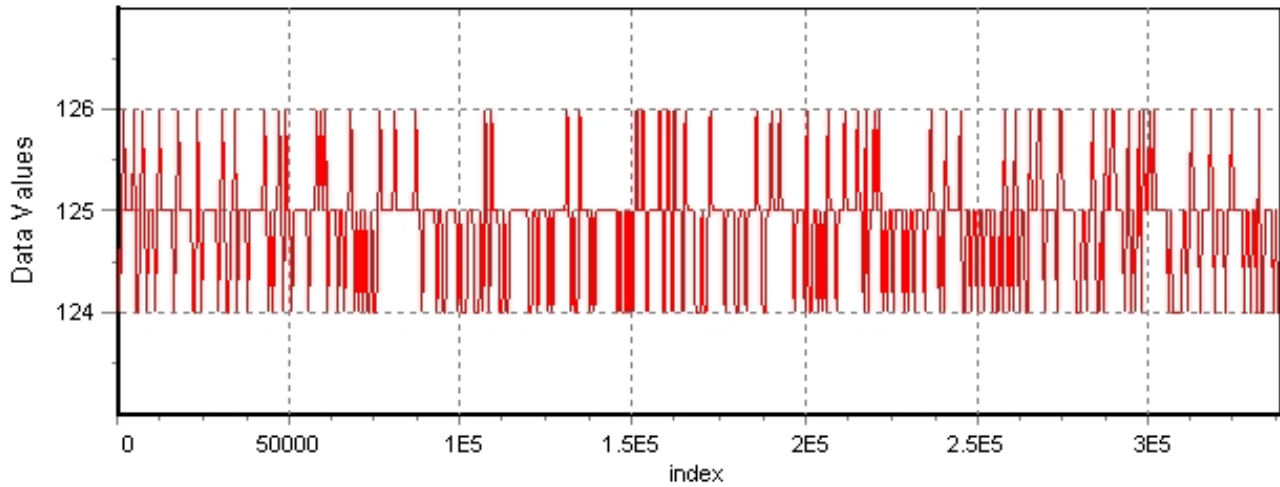
Data length N = 338395 points.

The mean Value of the processed data = 124.886

The Stanadr Deviation of the processed data = 0.565328

## AlaVar 5.2

### Data Values

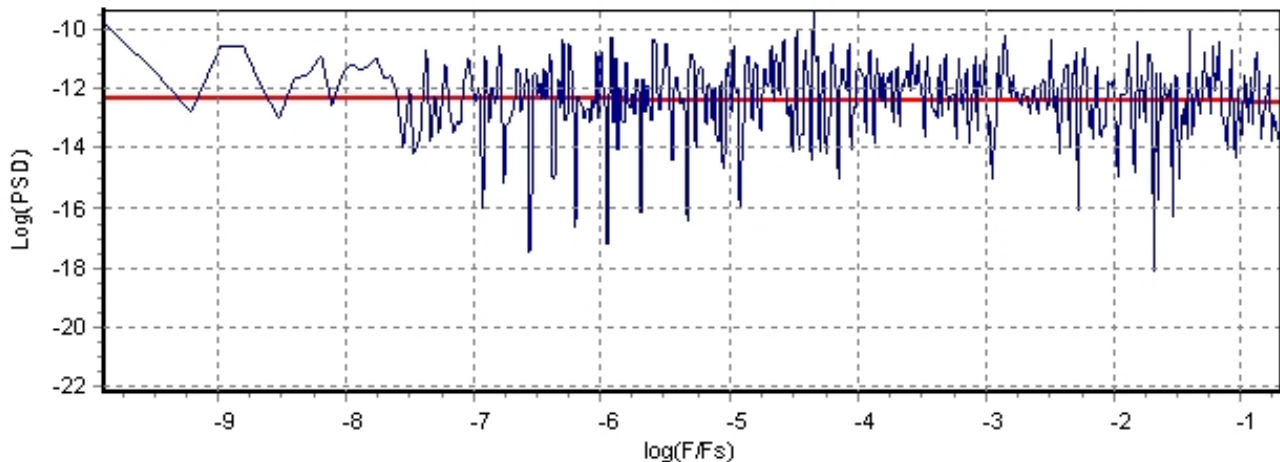


*Produced by AlaVar 5.2*

Figure 1 : Processed Data

## AlaVar 5.2

### PSD of Data



*Produced by AlaVar 5.2*

Figure 2 : Data PSD

The computation of the 3 ALLAN STD DEVS lasted 0.562000 seconds  
 The error bars were computed for a : White FM  
 The computation of the Error bars lasted 0.015 seconds

ADEV(tau) was fitted to a line :  
 The Solpe of the line is =-0.499217  
 The fit result is ADEV(tau=1) = Stability =0.283062

Tau = average Time  
 ADEV = Overlapping ALLAN STD DEV.  
 ADEV\_Min = ADEV lower bound.  
 ADEV\_Max = ADEV upper bound.  
 MDEV = Modified ALLAN STD DEV.  
 TDEV = Time ALLAN STD DEV.  
 HDEV = Overlapping HADAMARD STD DEV.

Tau	ADEV	ADEV_Min	ADEV_Max	MDEV	TDEV	HDEV
0.25	0.56538	0.56454	0.56623	0.56538	0.081606	0.56571
0.5	0.39874	0.3981	0.39939	0.31514	0.090972	0.39875
1	0.28184	0.28126	0.28243	0.20528	0.11852	0.28185
2	0.19946	0.19889	0.20003	0.14228	0.16429	0.19932
4	0.14174	0.14118	0.14231	0.10082	0.23283	0.14144
8	0.10122	0.10066	0.1018	0.071805	0.33165	0.10136
16	0.071138	0.070579	0.07171	0.050221	0.46392	0.071219
32	0.050244	0.049689	0.050819	0.035643	0.65851	0.050146
64	0.035861	0.035304	0.036445	0.025489	0.94184	0.035791
128	0.025305	0.024755	0.025894	0.017641	1.3037	0.025498
256	0.01741	0.016881	0.017992	0.012402	1.833	0.017168
512	0.013196	0.012639	0.013834	0.0096821	2.8621	0.012837
1024	0.01062	0.01	0.011372	0.0081766	4.8341	0.0099378
2048	0.010139	0.0093265	0.011208	0.0084448	9.9852	0.0088382
4096	0.011043	0.0098382	0.012835	0.0091509	21.64	0.0090297
8192	0.012808	0.010919	0.016207	0.011143	52.701	0.011714
16384	0.012843	0.010293	0.01925	0.0083864	79.33	0.0079291

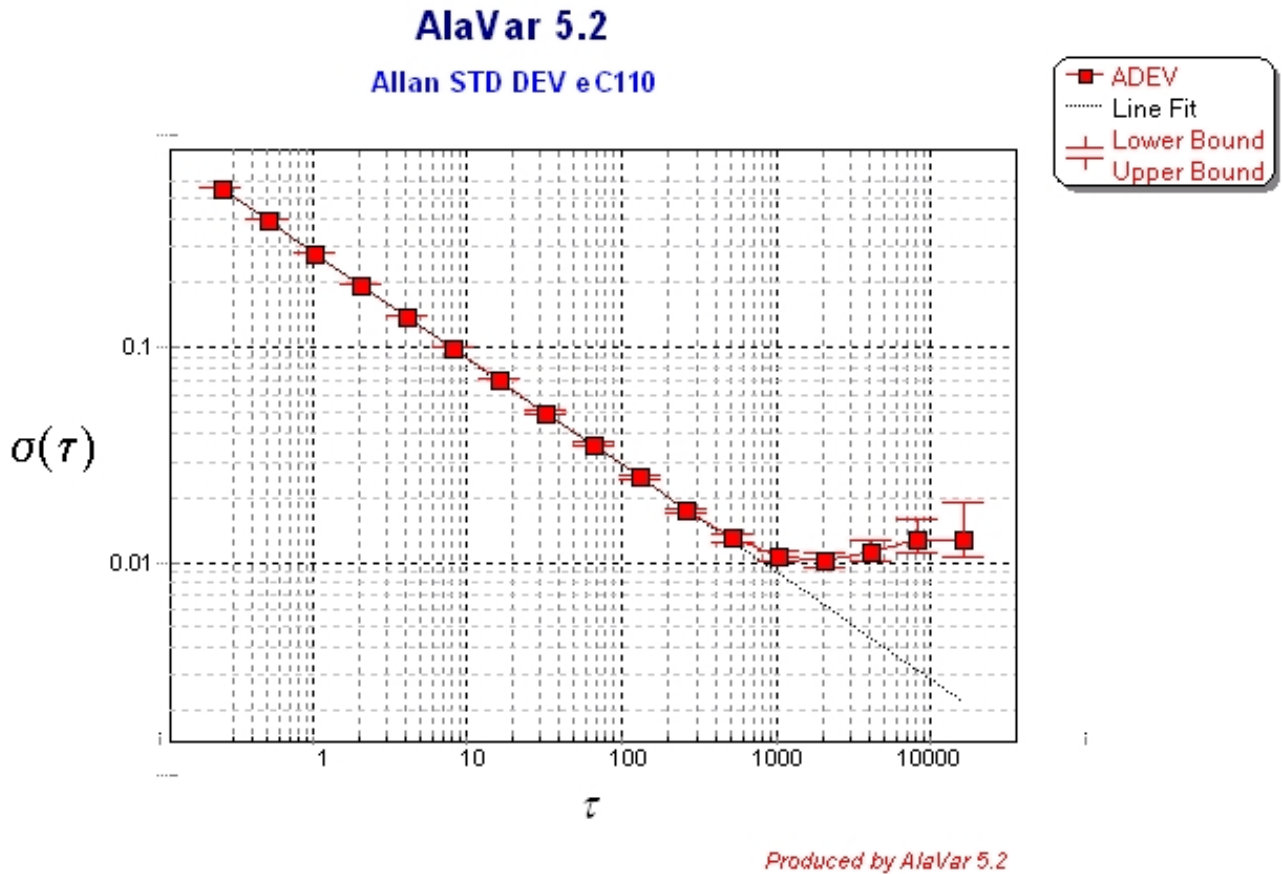


Figure 3 : Allan Standard Deviation