

AlaVar generated report

C:\CALLISTO-01\FITfiles\TotalLightcurve.DAT

File 'C:\CALLISTO-01\FITfiles\TotalLightcurve.DAT' created on 31.05.2022 16:34:16

Column # 1 was processed

Data length N = 16200 points.

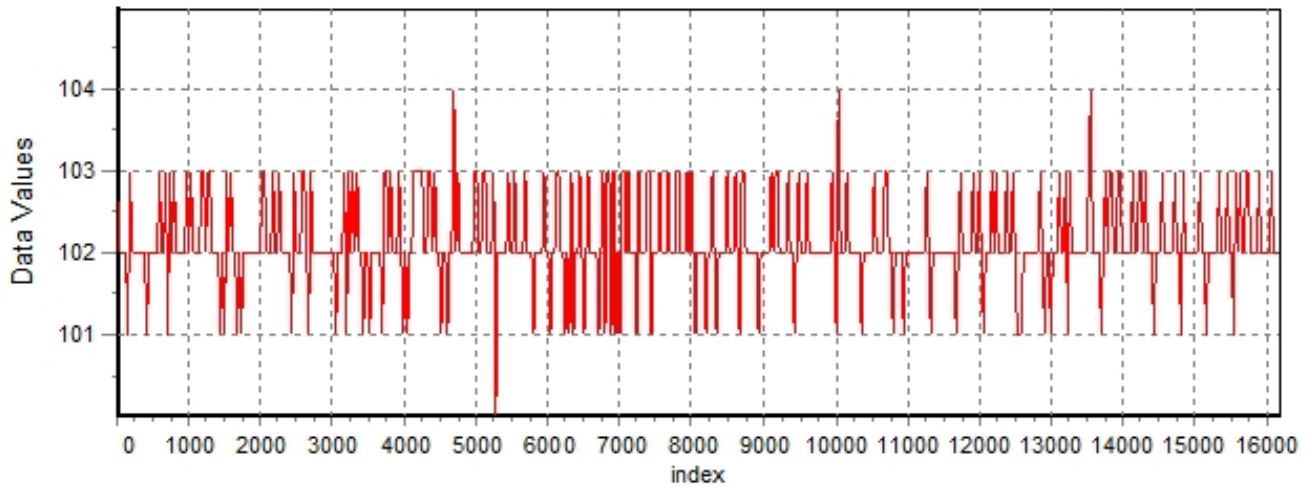
The mean Value of the processed data = 102.079

The Stanardr Deviation of the processed data = 2.47551

The number of removed outliers is 9

AlaVar 5.2

Data Values

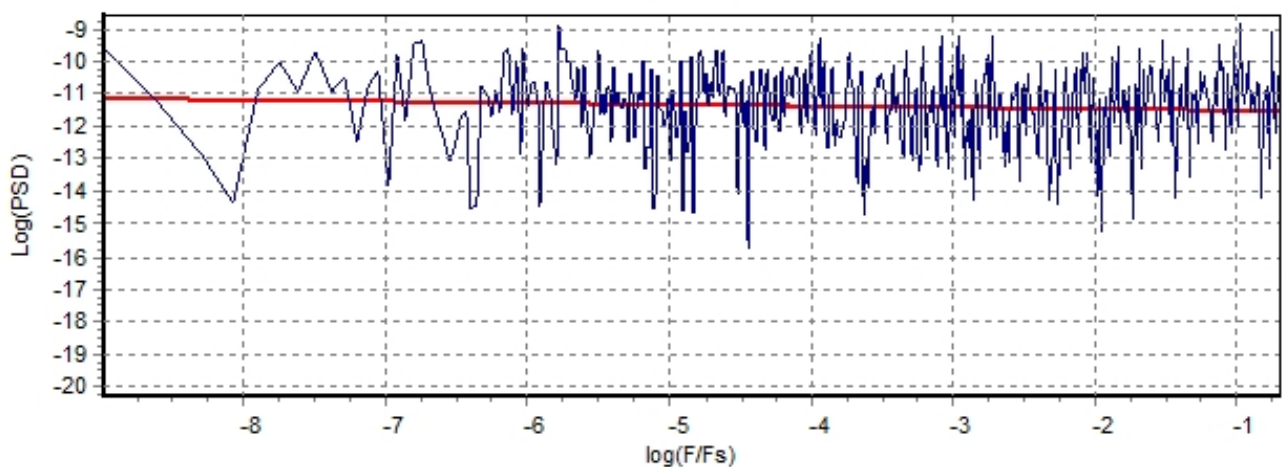


Produced by AlaVar 5.2

Figure 1 : Processed Data

AlaVar 5.2

PSD of Data



Produced by AlaVar 5.2

Figure 2 : Data PSD

The computation of the 3 ALLAN STD DEVs lasted 0.199000 seconds
 The error bars were computed for a : White FM
 The computation of the Error bars lasted 0 seconds

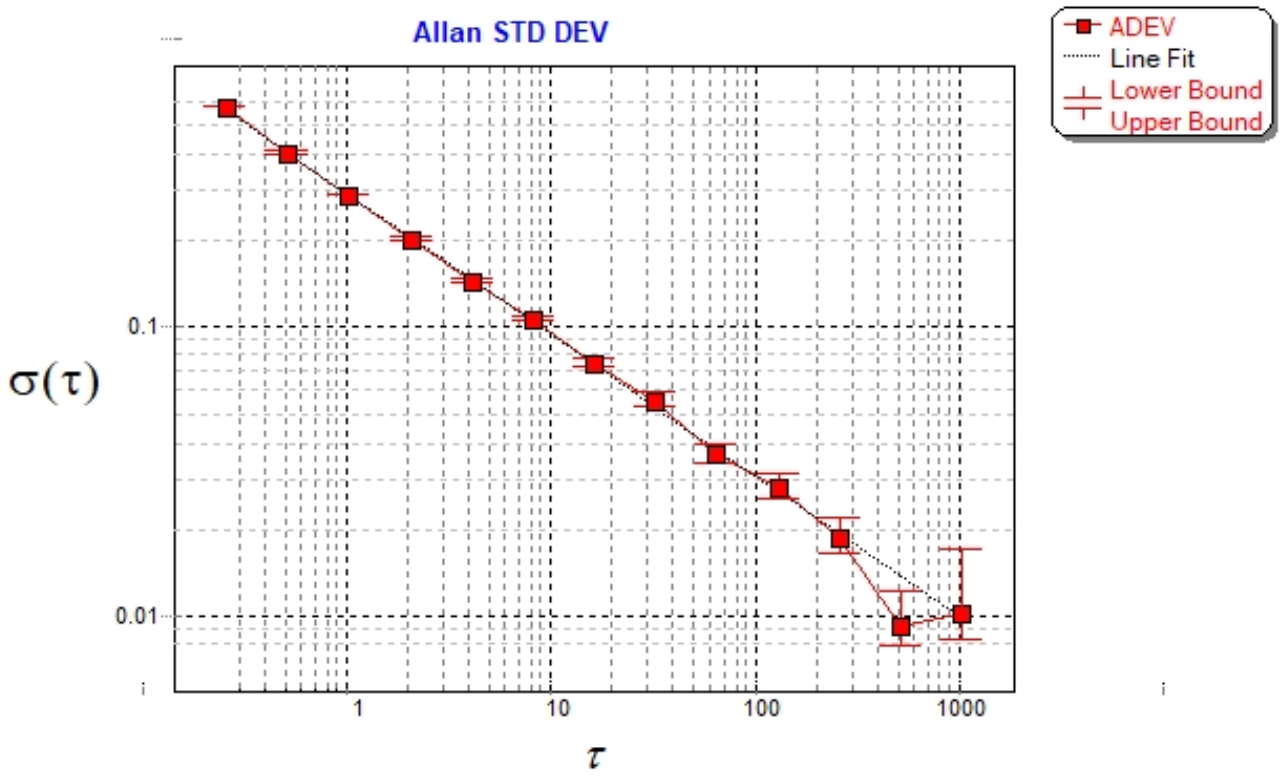
ADEV(tau) was fitted to a line :
 The Solpe of the line is =-0.489617
 The fit result is ADEV(tau=1) = Stability =0.290235

Tau = average Time
 ADEV = Overlapping ALLAN STD DEV.
 ADEV_Min = ADEV lower bound.
 ADEV_Max = ADEV upper bound.
 MDEV = Modified ALLAN STD DEV.
 TDEV = Time ALLAN STD DEV.
 HDEV = Overlapping HADAMARD STD DEV.

Tau	ADEV	ADEV_Min	ADEV_Max	MDEV	TDEV	HDEV
0.25	0.58168	0.57776	0.58569	0.58168	0.083959	0.58378
0.5	0.40642	0.40346	0.40944	0.3213	0.092752	0.40668
1	0.28656	0.28389	0.2893	0.20889	0.1206	0.28584
2	0.20419	0.20159	0.20689	0.14513	0.16758	0.20426
4	0.14455	0.14198	0.14725	0.10341	0.23882	0.14307
8	0.10626	0.10363	0.10911	0.076099	0.35149	0.10613
16	0.075003	0.072414	0.077891	0.053013	0.48971	0.07459
32	0.05588	0.053204	0.059004	0.040393	0.74627	0.056457
64	0.036485	0.034077	0.039488	0.025295	0.93464	0.035579
128	0.027886	0.025368	0.031342	0.018952	1.4005	0.026495
256	0.018564	0.016287	0.022171	0.012285	1.8157	0.018991
512	0.0091499	0.0076361	0.012173	0.004987	1.4742	0.0064217
1024	0.010187	0.0079179	0.017238	0.0097422	5.7597	0.0059286

CALLISTO eC60a 2022-05-31/cm

Allan STD DEV



Produced by AlaVar 5.2

Figure 3 : Allan Standard Deviation