

# AlaVar generated report

C:\CALLISTO-01\FITfiles\TotalLightcurve.DAT

File 'C:\CALLISTO-01\FITfiles\TotalLightcurve.DAT' created on 31.05.2022 13:28:28

Column # 1 was processed

Data length N = 9000 points.

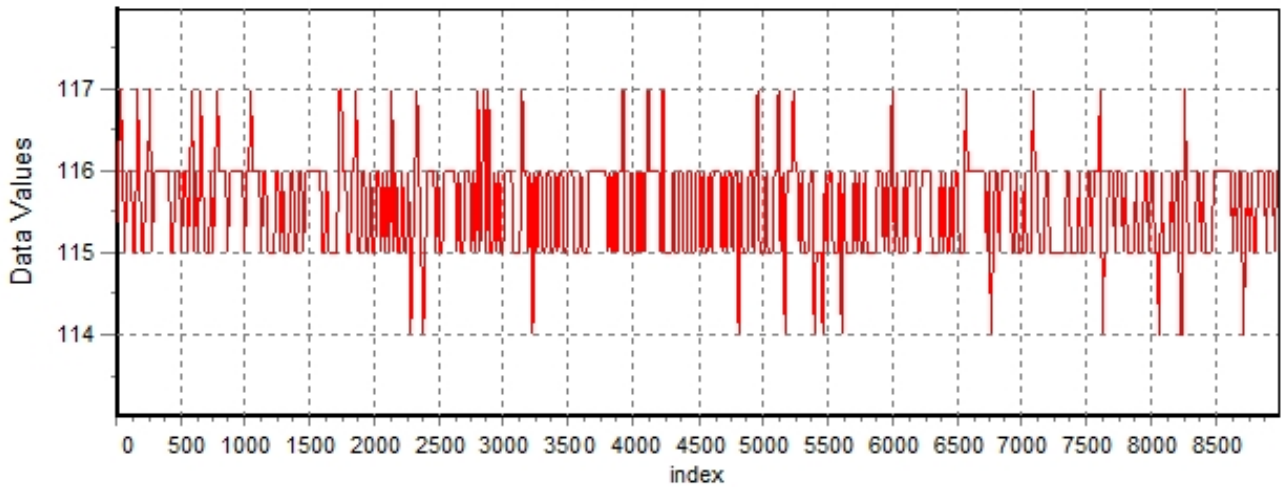
The mean Value of the processed data = 115.554

The Stanadrd Deviation of the processed data = 1.37404

The number of removed outliers is 4

## AlaVar 5.2

### Data Values

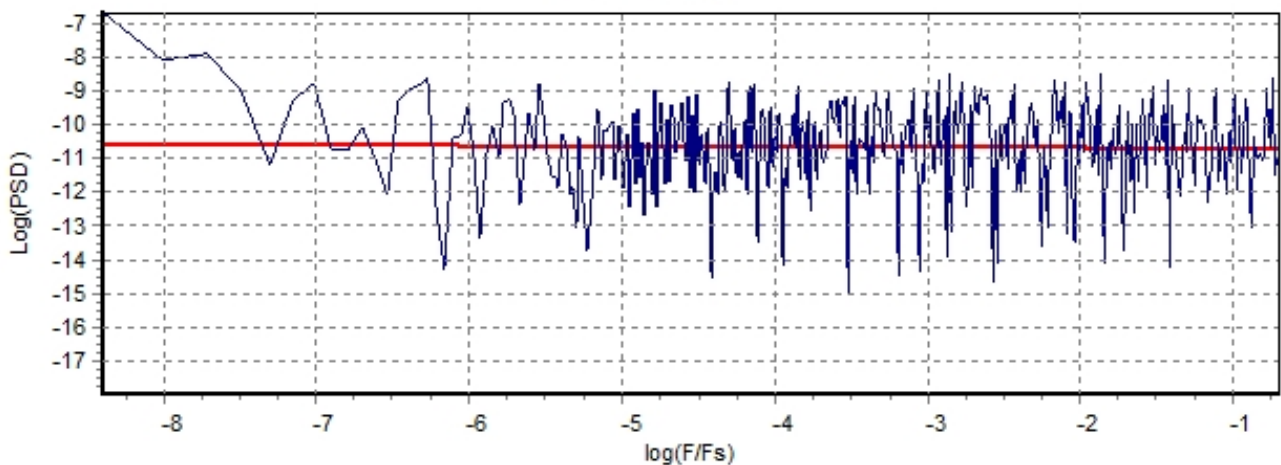


*Produced by AlaVar 5.2*

Figure 1 : Processed Data

## AlaVar 5.2

### PSD of Data



*Produced by AlaVar 5.2*

Figure 2 : Data PSD

The computation of the 3 ALLAN STD DEVS lasted 0.186000 seconds  
 The error bars were computed for a : White FM  
 The computation of the Error bars lasted 0 seconds

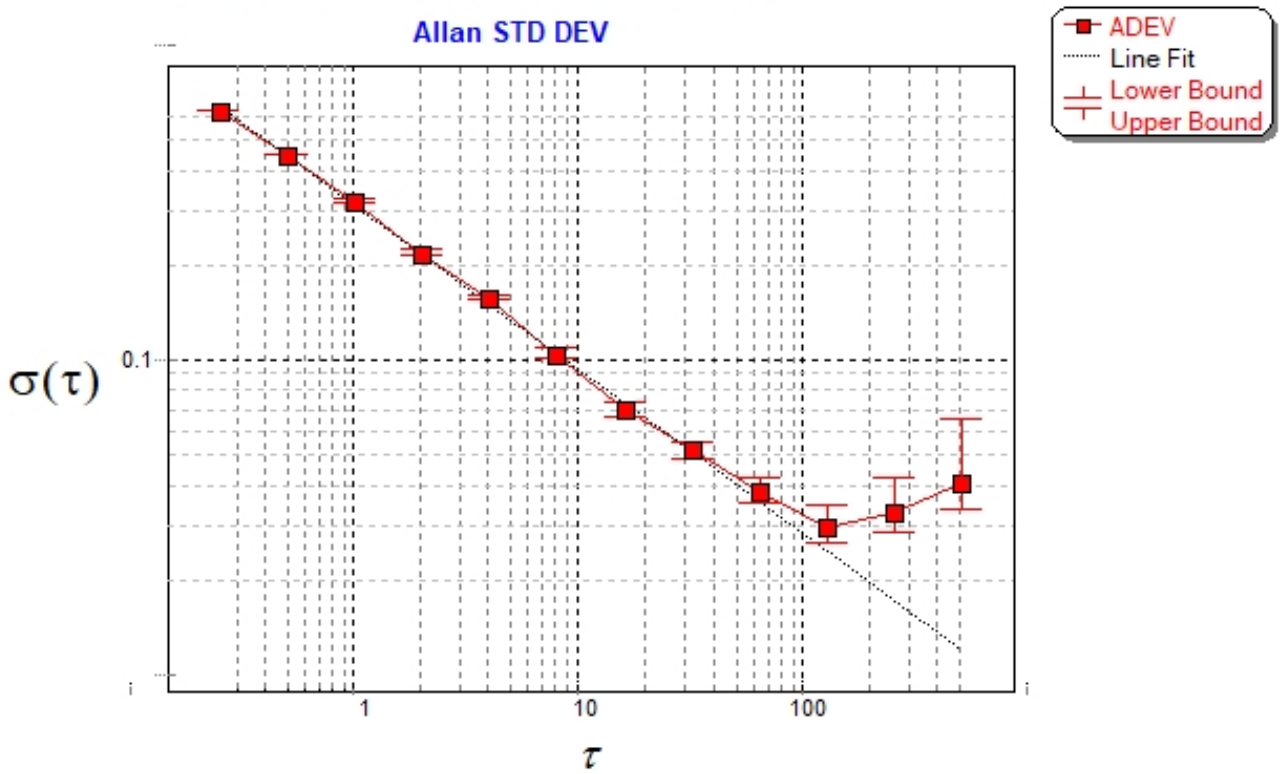
ADEV(tau) was fitted to a line :  
 The Solpe of the line is =-0.520708  
 The fit result is ADEV(tau=1) = Stability =0.311711

Tau = average Time  
 ADEV = Overlapping ALLAN STD DEV.  
 ADEV\_Min = ADEV lower bound.  
 ADEV\_Max = ADEV upper bound.  
 MDEV = Modified ALLAN STD DEV.  
 TDEV = Time ALLAN STD DEV.  
 HDEV = Overlapping HADAMARD STD DEV.

Tau	ADEV	ADEV_Min	ADEV_Max	MDEV	TDEV	HDEV
0.25	0.61796	0.61239	0.62369	0.61796	0.089195	0.61457
0.5	0.44745	0.4431	0.45193	0.35597	0.10276	0.4445
1	0.32229	0.31829	0.32645	0.23396	0.13508	0.32485
2	0.21969	0.21596	0.22362	0.15559	0.17966	0.21921
4	0.1573	0.15359	0.16129	0.11126	0.25695	0.1585
8	0.10474	0.1013	0.10855	0.070956	0.32773	0.10557
16	0.069977	0.066787	0.073671	0.047727	0.44088	0.06943
32	0.051936	0.04867	0.055962	0.037828	0.69888	0.051558
64	0.038468	0.035154	0.042938	0.02641	0.97588	0.037988
128	0.02956	0.026098	0.034902	0.02443	1.8054	0.025928
256	0.032684	0.027516	0.042561	0.027212	4.022	0.027986
512	0.04075	0.032076	0.065309	0.035201	10.406	0.027148

### CALLISTO eC52a 2022-05-31/cm

Allan STD DEV



Produced by AlaVar 5.2

Figure 3 : Allan Standard Deviation