

AlaVar generated report

C:\CALLISTO-01\FITfiles\TotalLightcurve.DAT

File 'C:\CALLISTO-01\FITfiles\TotalLightcurve.DAT' created on 17.11.2021 21:23:16

Column # 1 was processed

Data length N = 17406 points.

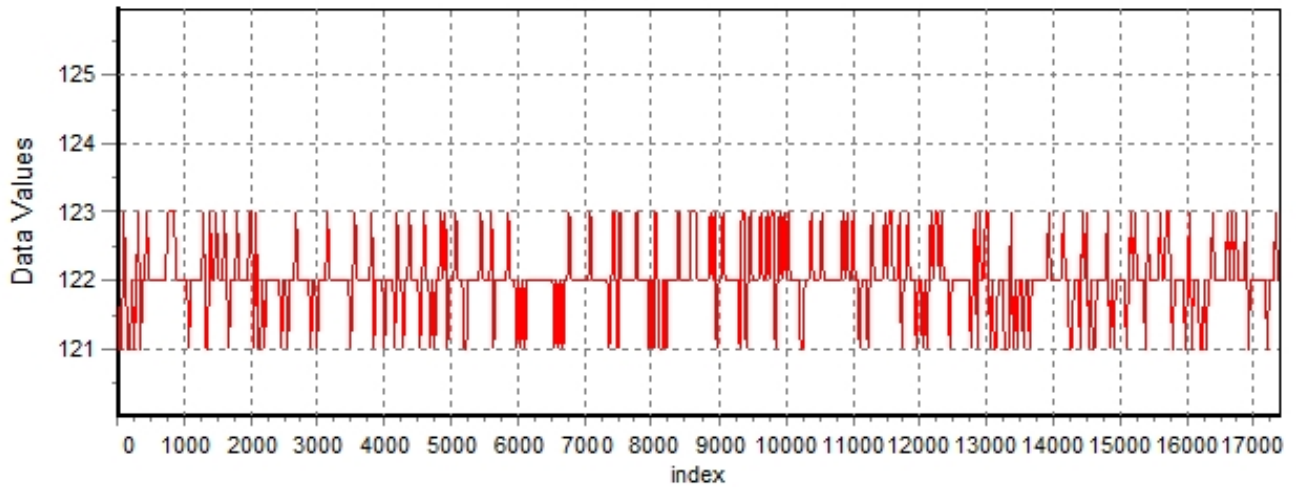
The mean Value of the processed data = 121.914

The Stanardr Deviation of the processed data = 2.98164

The number of removed outliers is 10

AlaVar 5.2

Data Values

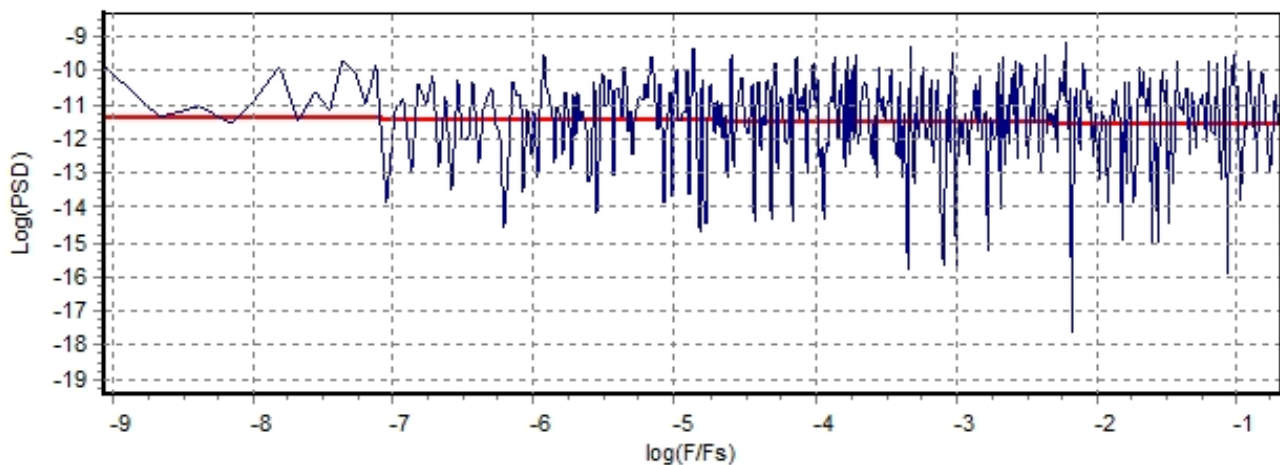


Produced by AlaVar 5.2

Figure 1 : Processed Data

AlaVar 5.2

PSD of Data



Produced by AlaVar 5.2

Figure 2 : Data PSD

The computation of the 3 ALLAN STD DEVS lasted 0.194000 seconds
 The error bars were computed for a : White FM
 The computation of the Error bars lasted 0.001 seconds

ADEV(tau) was fitted to a line :
 The Solpe of the line is =-0.508677
 The fit result is ADEV(tau=1) = Stability =0.291035

Tau = average Time
 ADEV = Overlapping ALLAN STD DEV.
 ADEV_Min = ADEV lower bound.
 ADEV_Max = ADEV upper bound.
 MDEV = Modified ALLAN STD DEV.
 TDEV = Time ALLAN STD DEV.
 HDEV = Overlapping HADAMARD STD DEV.

Tau	ADEV	ADEV_Min	ADEV_Max	MDEV	TDEV	HDEV
0.25	0.59358	0.58972	0.59752	0.59358	0.085677	0.59426
0.5	0.41679	0.41386	0.41978	0.32835	0.094786	0.4177
1	0.29031	0.28771	0.29299	0.2098	0.12113	0.29198
2	0.20023	0.19777	0.20278	0.14128	0.16314	0.2
4	0.1429	0.14046	0.14548	0.1018	0.23509	0.14223
8	0.1019	0.099457	0.10452	0.07174	0.33135	0.10208
16	0.071572	0.069185	0.074225	0.050484	0.46635	0.07129
32	0.049082	0.046809	0.051721	0.03366	0.62187	0.049389
64	0.0348	0.032578	0.03755	0.025238	0.93256	0.03395
128	0.028348	0.025869	0.031711	0.02147	1.5866	0.027435
256	0.020931	0.018443	0.024802	0.014753	2.1804	0.021666
512	0.011442	0.0096064	0.014998	0.0070269	2.0772	0.010451
1024	0.010602	0.008312	0.01727	0.010426	6.1639	0.0093153

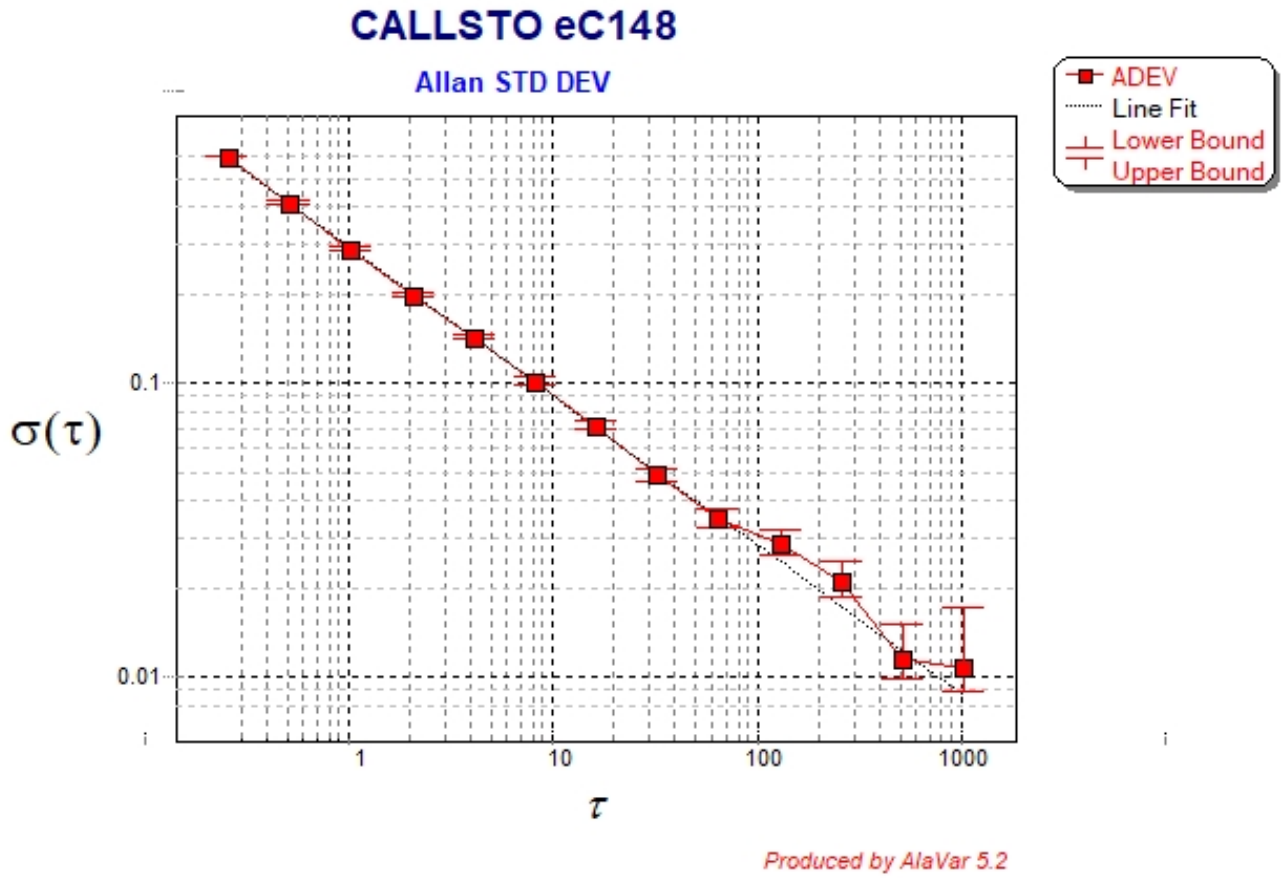


Figure 3 : Allan Standard Deviation