

AlaVar generated report

C:\CALLISTO-01\FITfiles\TotalLightCurve060.prn

File 'C:\CALLISTO-01\FITfiles\TotalLightCurve060.prn' created on 24.09.2021 16:50:30

Column # 1 was processed

Data length N = 25200 points.

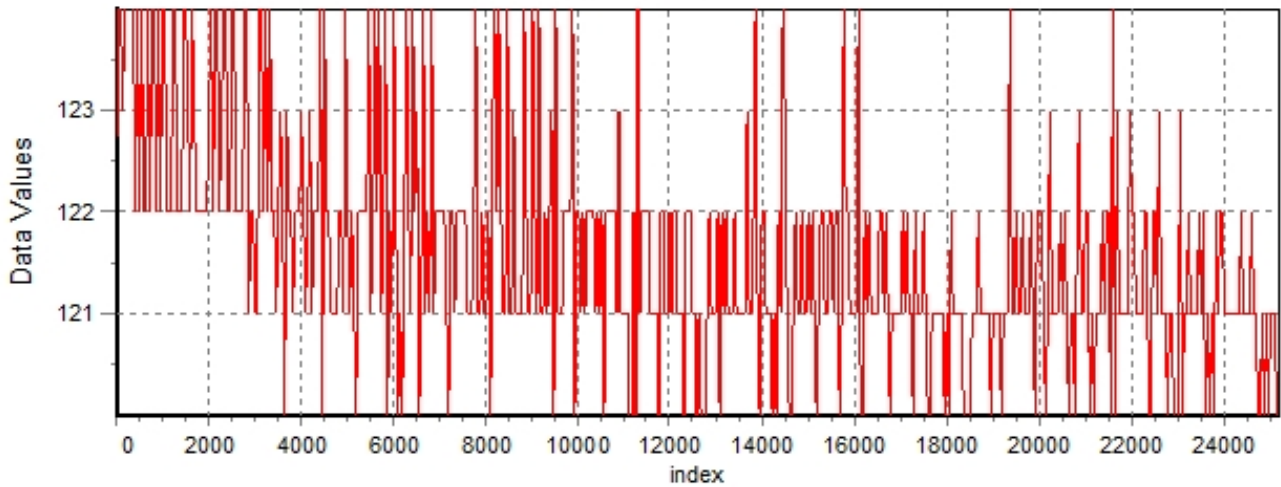
The mean Value of the processed data = 121.582

The Stanardr Deviation of the processed data = 2.30347

The number of removed outliers is 7

AlaVar 5.2

Data Values

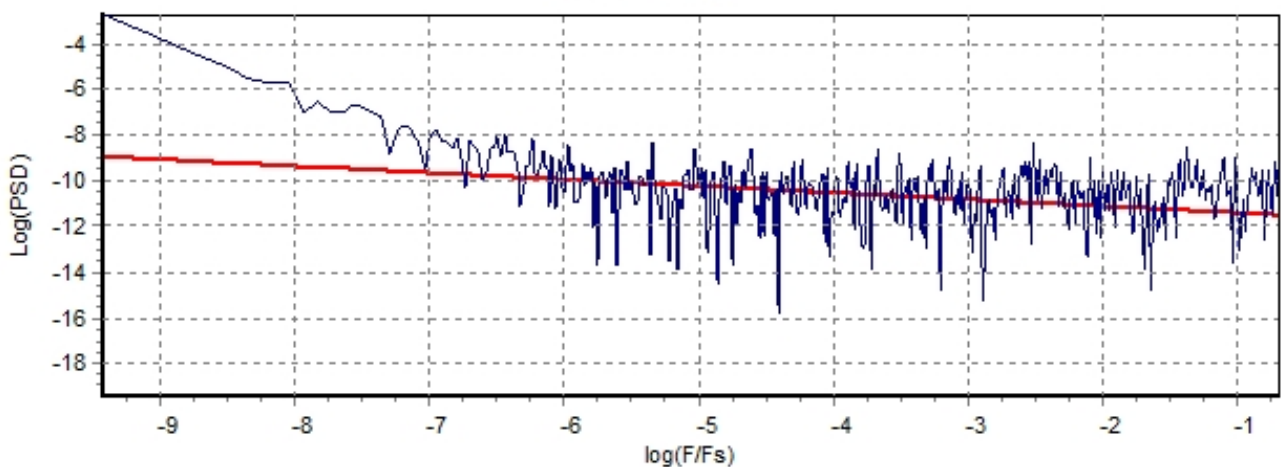


Produced by AlaVar 5.2

Figure 1 : Processed Data

AlaVar 5.2

PSD of Data



Produced by AlaVar 5.2

Figure 2 : Data PSD

The computation of the 3 ALLAN STD DEVs lasted 0.220000 seconds
 The error bars were computed for a : White FM
 The computation of the Error bars lasted 0 seconds

ADEV(tau) was fitted to a line :
 The Solpe of the line is =-0.49258
 The fit result is ADEV(tau=1) = Stability =0.476856

Tau = average Time
 ADEV = Overlapping ALLAN STD DEV.
 ADEV_Min = ADEV lower bound.
 ADEV_Max = ADEV upper bound.
 MDEV = Modified ALLAN STD DEV.
 TDEV = Time ALLAN STD DEV.
 HDEV = Overlapping HADAMARD STD DEV.

Tau	ADEV	ADEV_Min	ADEV_Max	MDEV	TDEV	HDEV
0.25	0.96432	0.9591	0.96963	0.96432	0.13919	0.96883
0.5	0.66823	0.66432	0.6722	0.52692	0.15211	0.66851
1	0.47182	0.4683	0.47543	0.34348	0.19831	0.47081
2	0.33598	0.33254	0.33953	0.23891	0.27587	0.33635
4	0.23637	0.233	0.2399	0.16815	0.38834	0.23546
8	0.17096	0.16754	0.17459	0.12286	0.56749	0.16933
16	0.12446	0.12098	0.12825	0.087745	0.81055	0.12503
32	0.087724	0.084313	0.091586	0.063707	1.177	0.086096
64	0.068199	0.064528	0.072576	0.05084	1.8786	0.063222
128	0.064547	0.05977	0.070688	0.054854	4.0537	0.045801
256	0.088794	0.079826	0.10167	0.08019	11.852	0.03745
512	0.14263	0.12313	0.17579	0.1195	35.323	0.038777
1024	0.21644	0.17656	0.30649	0.17571	103.88	0.071054
2048	0.33055	0.24858	0.67315	0.30326	358.57	0.23078

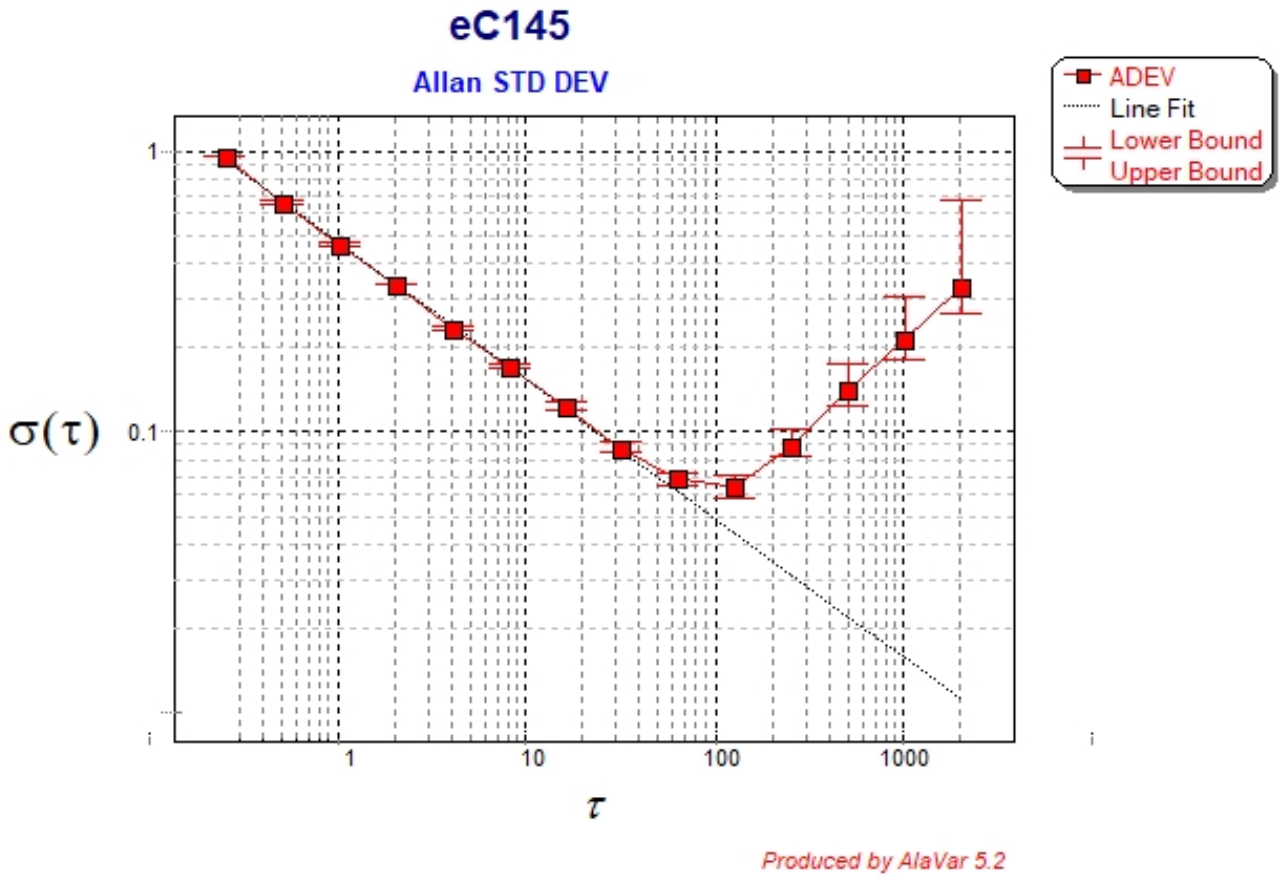


Figure 3 : Allan Standard Deviation