

AlaVar generated report

C:\CALLISTO-01\FITfiles\TotalLightcurve.DAT

File 'C:\CALLISTO-01\FITfiles\TotalLightcurve.DAT' created on 25.05.2026 05:03:40

Column # 1 was processed

Data length N = 55800 points.

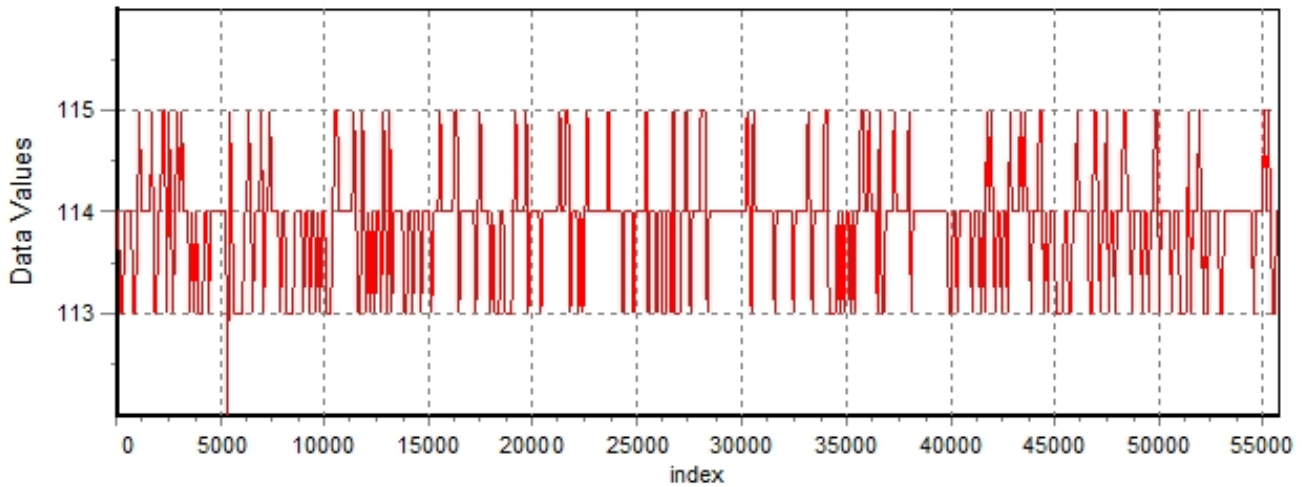
The mean Value of the processed data = 113.801

The Stanardr Deviation of the processed data = 2.56583

The number of removed outliers is 27

AlaVar 5.2

Data Values

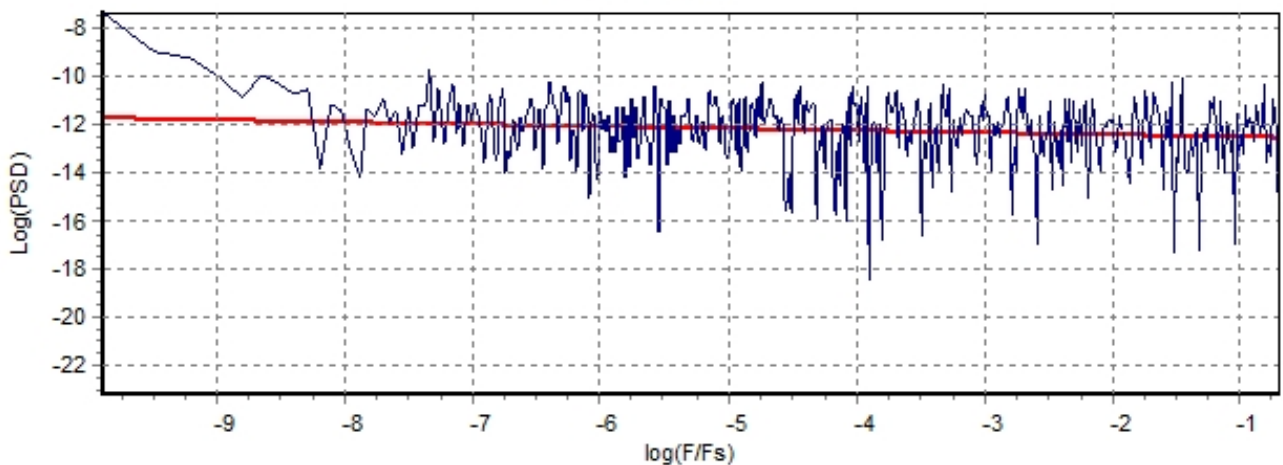


Produced by AlaVar 5.2

Figure 1 : Processed Data

AlaVar 5.2

PSD of Data



Produced by AlaVar 5.2

Figure 2 : Data PSD

The computation of the 3 ALLAN STD DEVs lasted 0.143000 seconds
 The error bars were computed for a : White FM
 The computation of the Error bars lasted 0 seconds

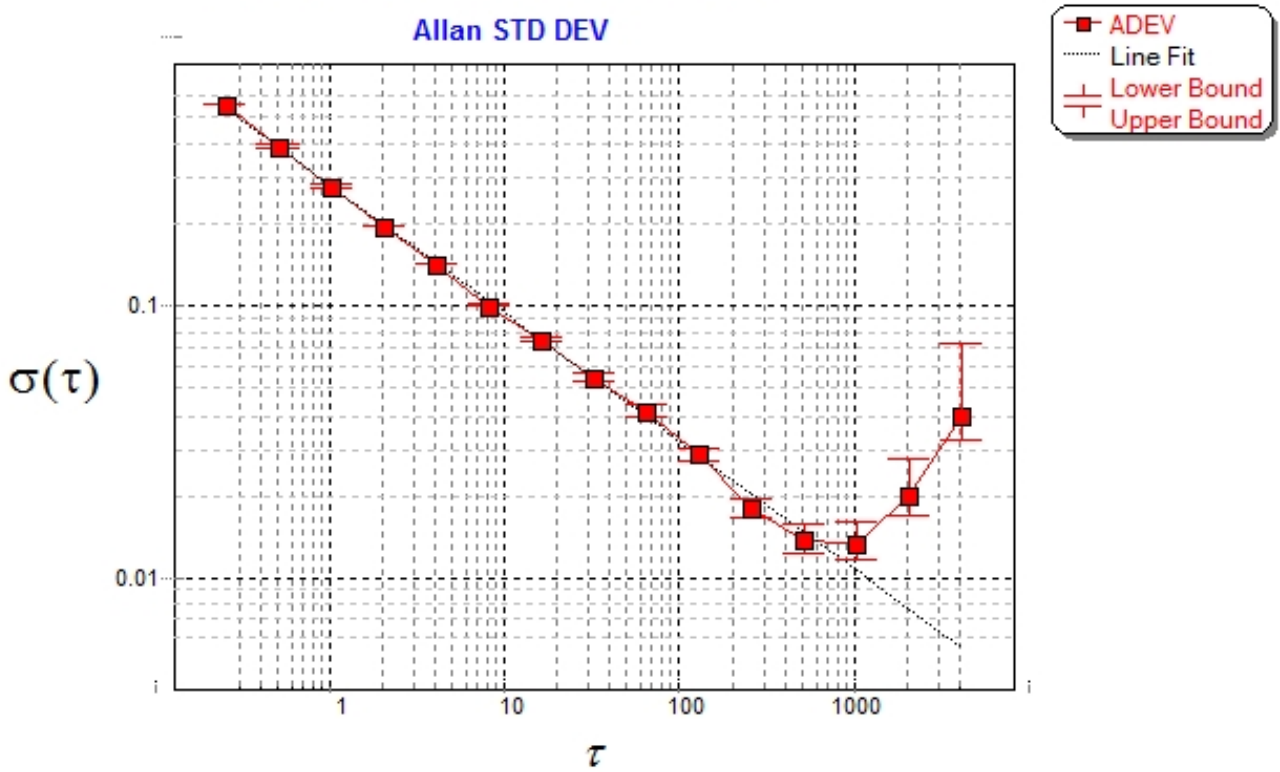
ADEV(tau) was fitted to a line :
 The Solpe of the line is =-0.472373
 The fit result is ADEV(tau=1) = Stability =0.281194

Tau = average Time
 ADEV = Overlapping ALLAN STD DEV.
 ADEV_Min = ADEV lower bound.
 ADEV_Max = ADEV upper bound.
 MDEV = Modified ALLAN STD DEV.
 TDEV = Time ALLAN STD DEV.
 HDEV = Overlapping HADAMARD STD DEV.

Tau	ADEV	ADEV_Min	ADEV_Max	MDEV	TDEV	HDEV
0.25	0.5596	0.55756	0.56166	0.5596	0.080771	0.55972
0.5	0.39574	0.39418	0.39732	0.31313	0.090393	0.39543
1	0.28085	0.27944	0.28229	0.20493	0.11832	0.28077
2	0.19903	0.19766	0.20044	0.14244	0.16448	0.19829
4	0.1429	0.14152	0.14433	0.10138	0.23413	0.14345
8	0.10015	0.098794	0.10157	0.071849	0.33185	0.098684
16	0.074988	0.073561	0.076501	0.053878	0.4977	0.074583
32	0.054777	0.053319	0.05636	0.039802	0.73534	0.054088
64	0.041323	0.039792	0.043046	0.029942	1.1064	0.041585
128	0.028636	0.027166	0.030374	0.020346	1.5036	0.029045
256	0.01805	0.016774	0.019669	0.011877	1.7554	0.018038
512	0.013896	0.012555	0.015785	0.010262	3.0334	0.012273
1024	0.013241	0.011508	0.016099	0.011167	6.602	0.0089679
2048	0.020129	0.016578	0.027731	0.01975	23.353	0.0072827
4096	0.039344	0.030001	0.073439	0.038762	91.664	0.013185

CALLISTO eC216, 2026-05-24

Allan STD DEV



Produced by AlaVar 5.2

Figure 3 : Allan Standard Deviation