

AlaVar generated report

C:\CALLISTO-01\FITfiles\TotalLightcurve.DAT

File 'C:\CALLISTO-01\FITfiles\TotalLightcurve.DAT' created on 15.04.2026 15:22:54

Column # 1 was processed

Data length N = 17684 points.

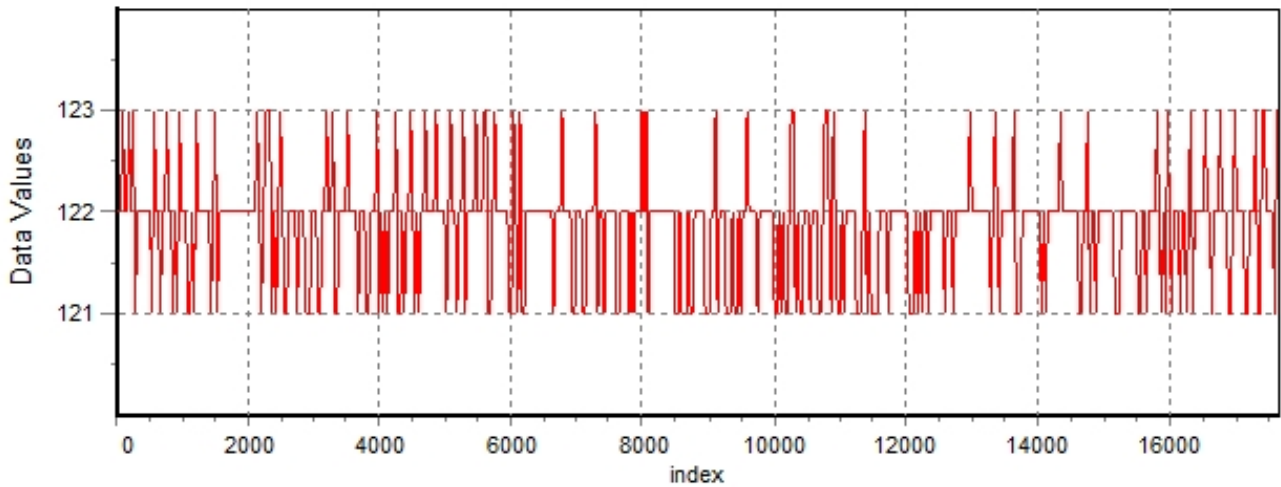
The mean Value of the processed data = 121.763

The Stanadrnd Deviation of the processed data = 2.95008

The number of removed outliers is 10

AlaVar 5.2

Data Values

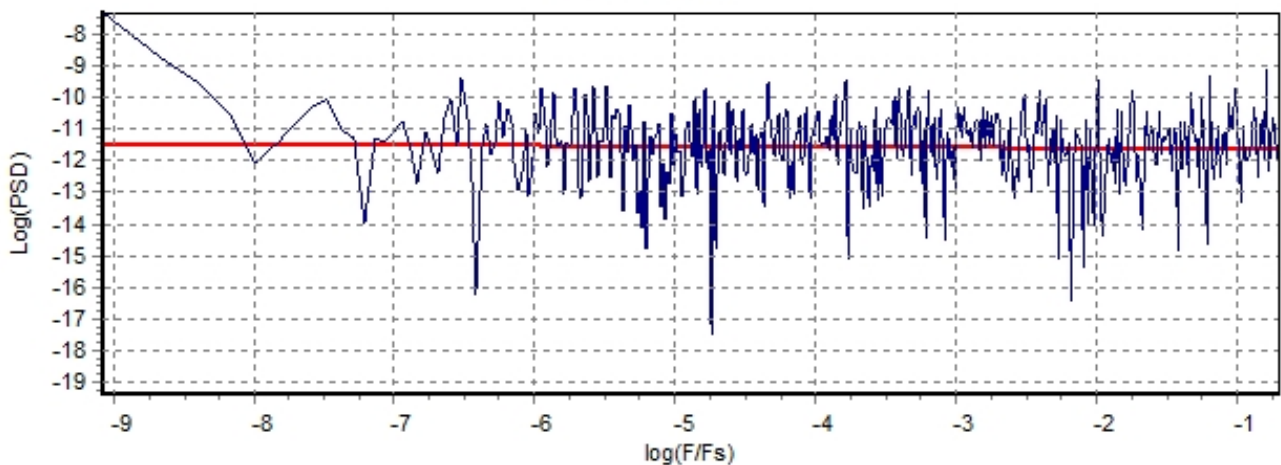


Produced by AlaVar 5.2

Figure 1 : Processed Data

AlaVar 5.2

PSD of Data



Produced by AlaVar 5.2

Figure 2 : Data PSD

The computation of the 3 ALLAN STD DEVs lasted 0.031000 seconds
 The error bars were computed for a : White FM
 The computation of the Error bars lasted 0.002 seconds

ADEV(tau) was fitted to a line :
 The Solpe of the line is =-0.50664
 The fit result is ADEV(tau=1) = Stability =0.277364

Tau = average Time
 ADEV = Overlapping ALLAN STD DEV.
 ADEV_Min = ADEV lower bound.
 ADEV_Max = ADEV upper bound.
 MDEV = Modified ALLAN STD DEV.
 TDEV = Time ALLAN STD DEV.
 HDEV = Overlapping HADAMARD STD DEV.

Tau	ADEV	ADEV_Min	ADEV_Max	MDEV	TDEV	HDEV
0.25	0.56361	0.55997	0.56732	0.56361	0.081351	0.5665
0.5	0.39111	0.38839	0.3939	0.30905	0.089214	0.39071
1	0.27796	0.27549	0.2805	0.20271	0.11703	0.27758
2	0.19772	0.19531	0.20022	0.14097	0.16278	0.19822
4	0.13813	0.13578	0.1406	0.096924	0.22384	0.13934
8	0.094549	0.092304	0.096967	0.066183	0.30569	0.095196
16	0.065834	0.063654	0.068253	0.046766	0.43201	0.064994
32	0.04972	0.047436	0.052371	0.035197	0.65028	0.050435
64	0.032935	0.030847	0.035514	0.023163	0.85589	0.033046
128	0.02195	0.020043	0.024528	0.01515	1.1196	0.020943
256	0.018271	0.016114	0.021613	0.01501	2.2185	0.012779
512	0.025597	0.021519	0.033448	0.019375	5.7273	0.012492
1024	0.025717	0.020201	0.041569	0.011668	6.8983	0.020415

CALLISTO eC212, 2026-04-15

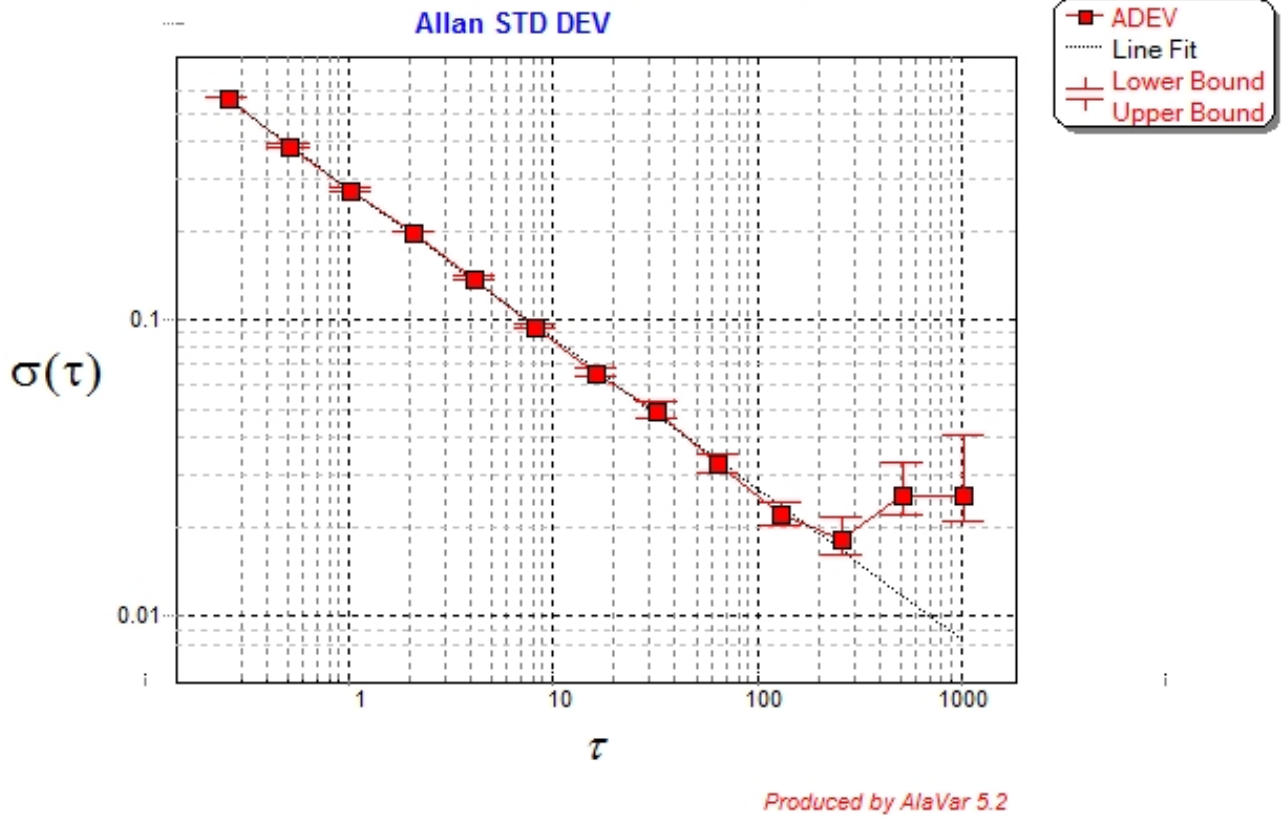


Figure 3 : Allan Standard Deviation