

AlaVar generated report

C:\CALLISTO-01\FITfiles\TotalLightcurve.DAT

File 'C:\CALLISTO-01\FITfiles\TotalLightcurve.DAT' created on 12.04.2026 14:25:18

Column # 1 was processed

Data length N = 12600 points.

The mean Value of the processed data = 116.757

The Stanardr Deviation of the processed data = 2.81388

The number of removed outliers is 7

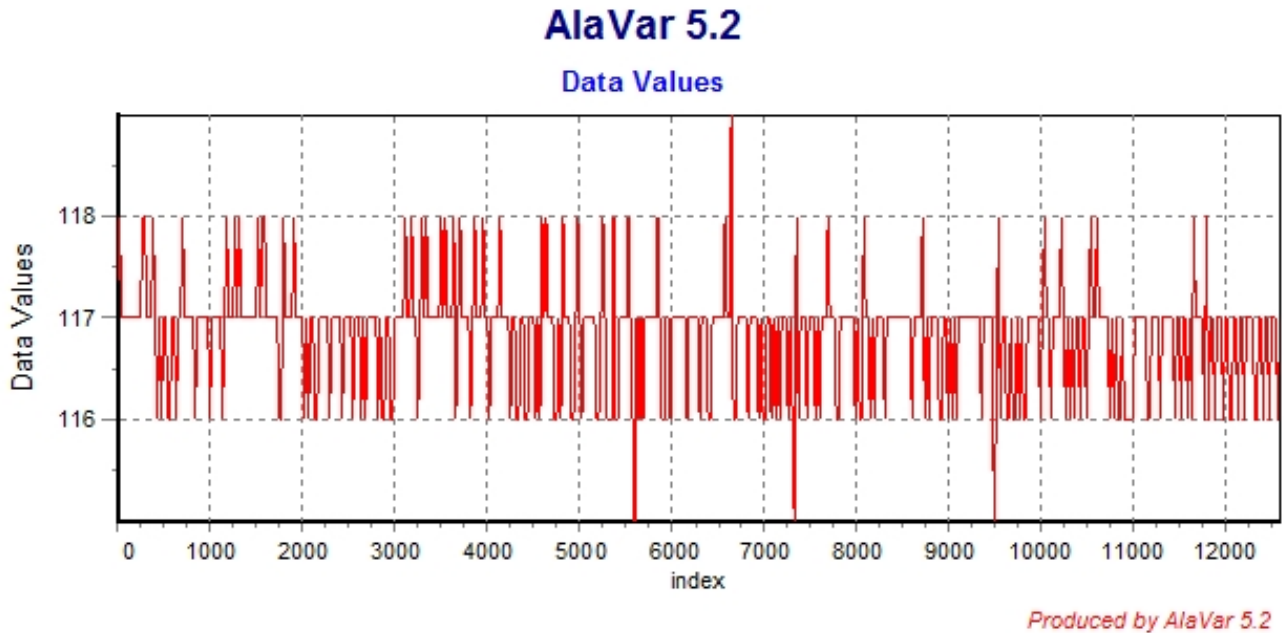


Figure 1 : Processed Data

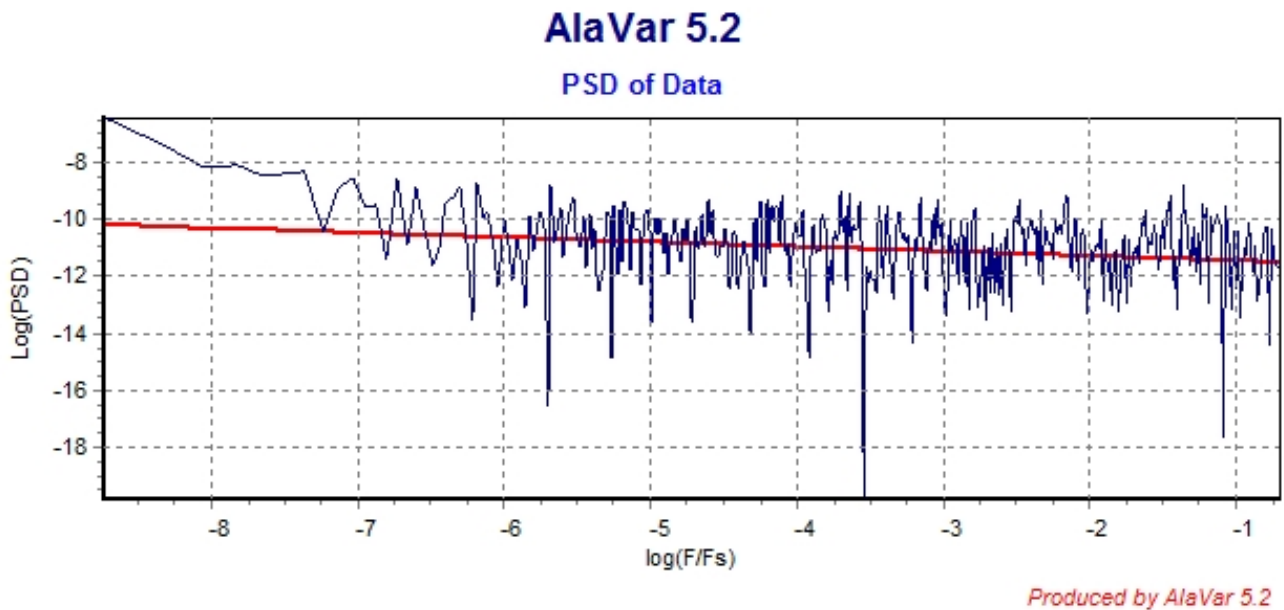


Figure 2 : Data PSD

The computation of the 3 ALLAN STD DEVS lasted 0.016000 seconds
 The error bars were computed for a : White FM
 The computation of the Error bars lasted 0 seconds

ADEV(tau) was fitted to a line :
 The Solpe of the line is =-0.470067
 The fit result is ADEV(tau=1) = Stability =0.288245

Tau = average Time
 ADEV = Overlapping ALLAN STD DEV.
 ADEV_Min = ADEV lower bound.
 ADEV_Max = ADEV upper bound.
 MDEV = Modified ALLAN STD DEV.
 TDEV = Time ALLAN STD DEV.
 HDEV = Overlapping HADAMARD STD DEV.

Tau	ADEV	ADEV_Min	ADEV_Max	MDEV	TDEV	HDEV
0.25	0.57485	0.57046	0.57934	0.57485	0.082972	0.57464
0.5	0.40711	0.40375	0.41055	0.32145	0.092794	0.40843
1	0.28445	0.28146	0.28754	0.20712	0.11958	0.28445
2	0.20118	0.19828	0.2042	0.14292	0.16503	0.20096
4	0.14363	0.14075	0.14669	0.10295	0.23775	0.14252
8	0.10531	0.10237	0.10853	0.075863	0.35039	0.1043
16	0.078922	0.075853	0.082397	0.057787	0.53382	0.077869
32	0.059743	0.056527	0.063578	0.044138	0.81546	0.057587
64	0.048909	0.045289	0.053563	0.037186	1.374	0.046721
128	0.042015	0.037772	0.048107	0.03264	2.4121	0.040109
256	0.036713	0.031692	0.045249	0.028239	4.1738	0.030404
512	0.039534	0.032249	0.055987	0.027877	8.2406	0.024294
1024	0.048281	0.036308	0.098345	0.041119	24.31	0.052424

CALLISTO eC209, 2026-04-12

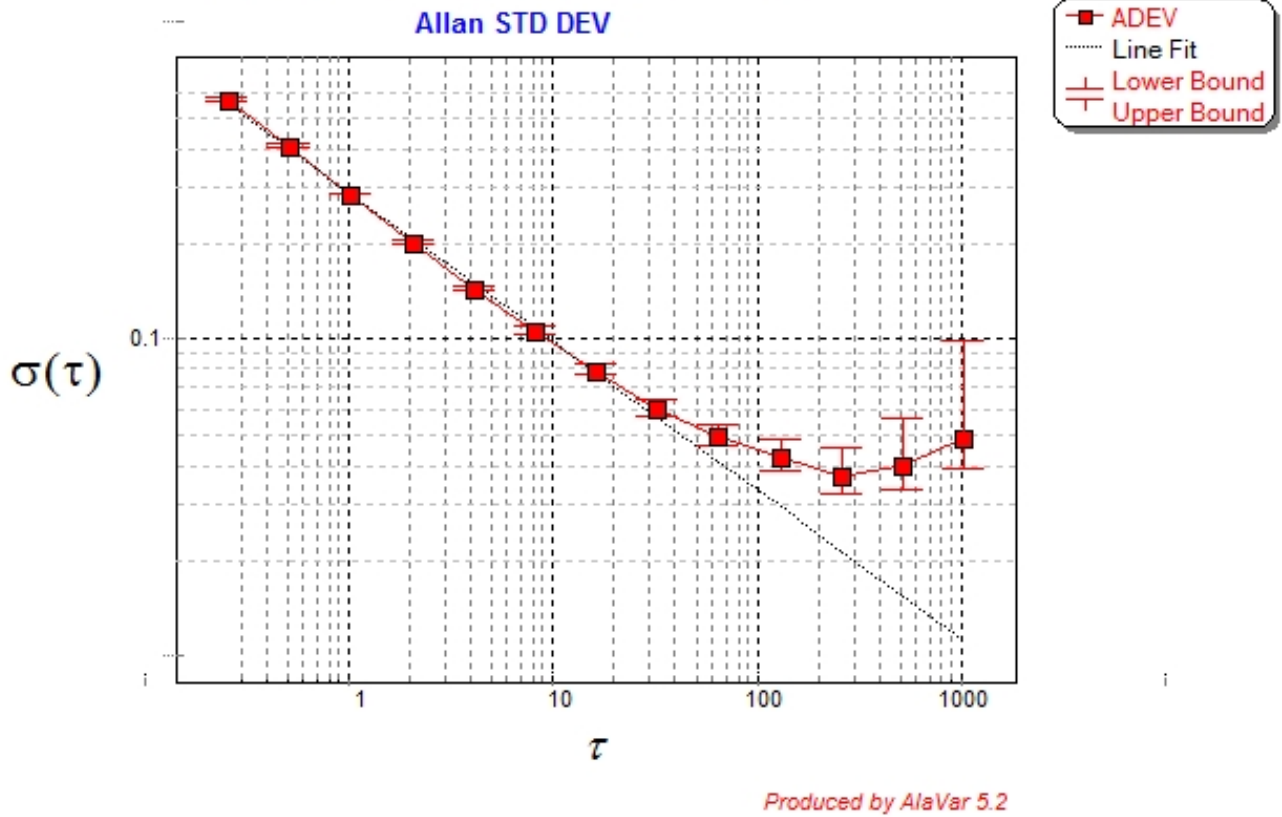


Figure 3 : Allan Standard Deviation