

AlaVar generated report

C:\CALLISTO-01\FITfiles\TotalLightcurve.DAT

File 'C:\CALLISTO-01\FITfiles\TotalLightcurve.DAT' created on 11.04.2026 14:54:06

Column # 1 was processed

Data length N = 27000 points.

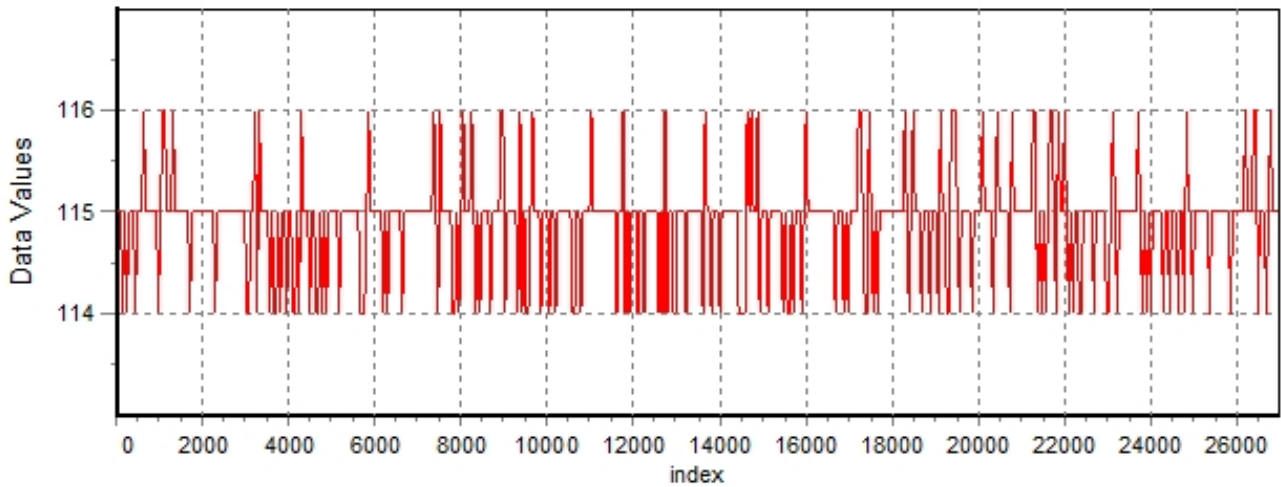
The mean Value of the processed data = 114.842

The Stanardr Deviation of the processed data = 2.76104

The number of removed outliers is 15

AlaVar 5.2

Data Values

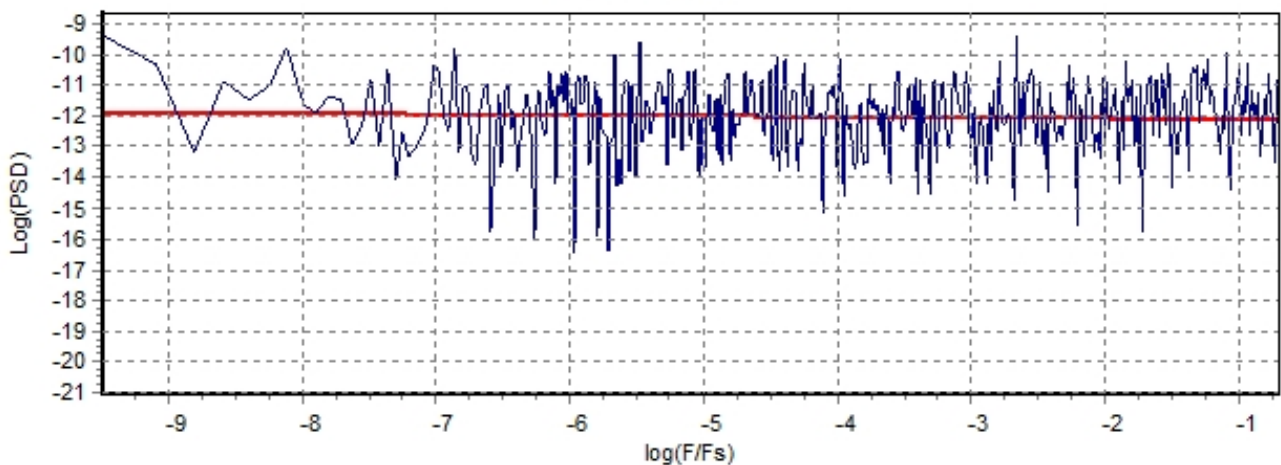


Produced by AlaVar 5.2

Figure 1 : Processed Data

AlaVar 5.2

PSD of Data



Produced by AlaVar 5.2

Figure 2 : Data PSD

The computation of the 3 ALLAN STD DEVS lasted 0.035000 seconds
 The error bars were computed for a : White FM
 The computation of the Error bars lasted 0.001 seconds

ADEV(tau) was fitted to a line :
 The Solpe of the line is =-0.501589
 The fit result is ADEV(tau=1) = Stability =0.270491

Tau = average Time
 ADEV = Overlapping ALLAN STD DEV.
 ADEV_Min = ADEV lower bound.
 ADEV_Max = ADEV upper bound.
 MDEV = Modified ALLAN STD DEV.
 TDEV = Time ALLAN STD DEV.
 HDEV = Overlapping HADAMARD STD DEV.

Tau	ADEV	ADEV_Min	ADEV_Max	MDEV	TDEV	HDEV
0.25	0.54015	0.53733	0.54303	0.54015	0.077964	0.54056
0.5	0.38191	0.37975	0.3841	0.30257	0.087345	0.38161
1	0.27036	0.2684	0.27235	0.19649	0.11344	0.27105
2	0.18937	0.1875	0.1913	0.13471	0.15555	0.18929
4	0.13522	0.13336	0.13717	0.096913	0.22381	0.13435
8	0.097823	0.095931	0.099831	0.069156	0.31942	0.0985
16	0.067785	0.065953	0.069779	0.048263	0.44583	0.067662
32	0.047399	0.045615	0.04941	0.033203	0.61343	0.047615
64	0.033066	0.031342	0.035109	0.023192	0.85697	0.032958
128	0.023563	0.021873	0.025717	0.01608	1.1884	0.024387
256	0.015165	0.013679	0.017269	0.010611	1.5683	0.012883
512	0.012737	0.011046	0.015553	0.0079141	2.3394	0.011958
1024	0.0091655	0.0075258	0.012735	0.0063583	3.7591	0.0075639
2048	0.0073378	0.0055707	0.014057	0.0027203	3.2165	0.010809

CALLISTO eC206, 11.04.2026

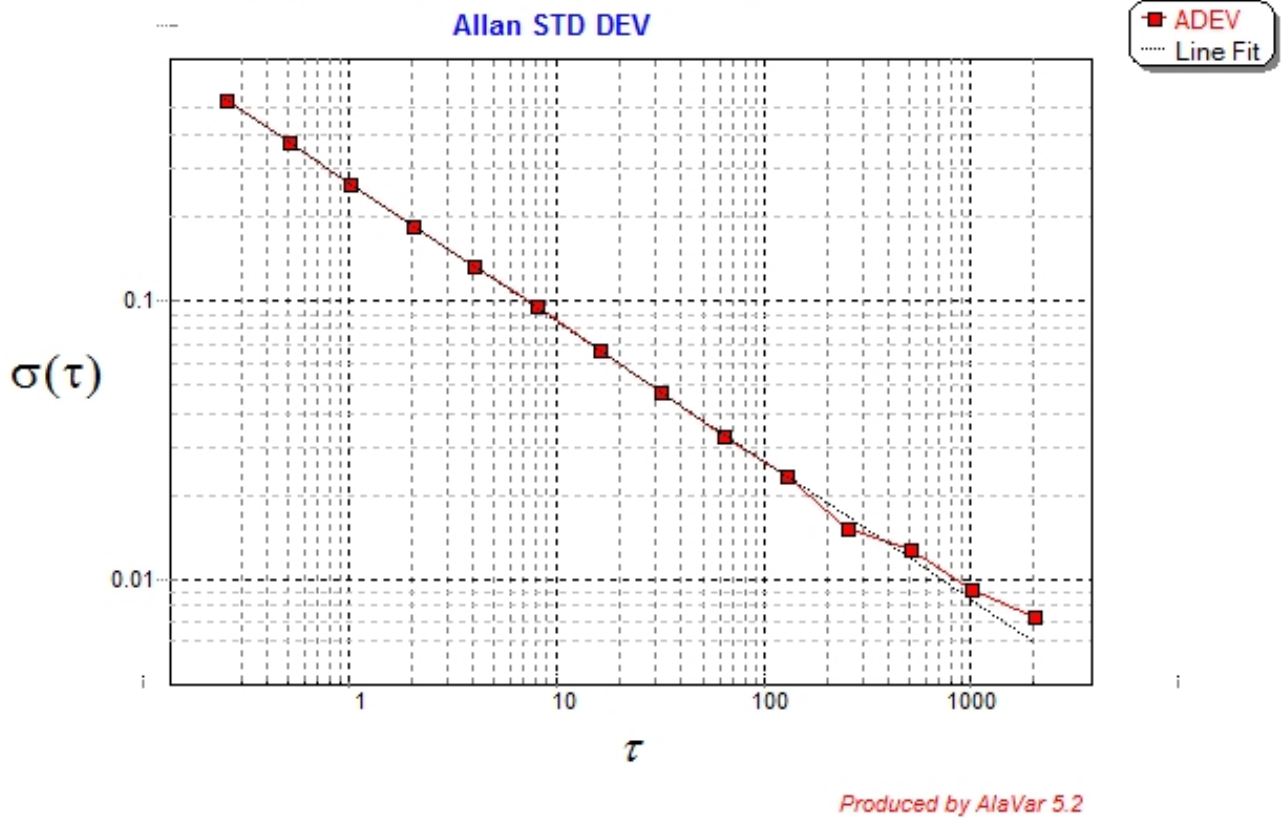


Figure 3 : Allan Standard Deviation