

AlaVar generated report

C:\CALLISTO-01\FITfiles\TotalLightcurve.DAT

File 'C:\CALLISTO-01\FITfiles\TotalLightcurve.DAT' created on 14.12.2024 14:42:48

Column # 1 was processed

Data length N = 7582 points.

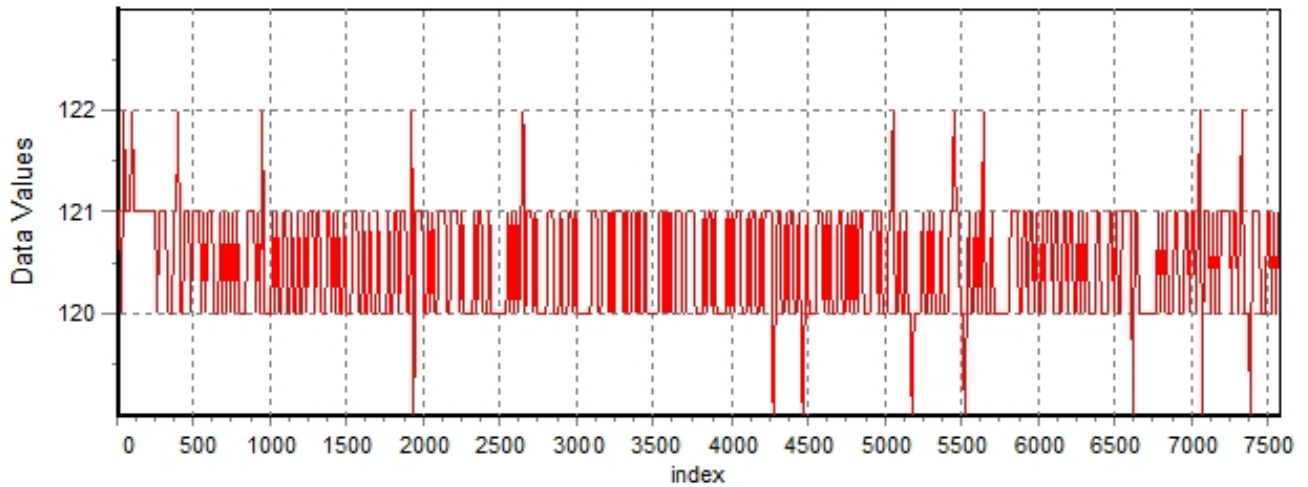
The mean Value of the processed data = 120.418

The Stanardd Deviation of the processed data = 3.14586

The number of removed outliers is 5

AlaVar 5.2

Data Values

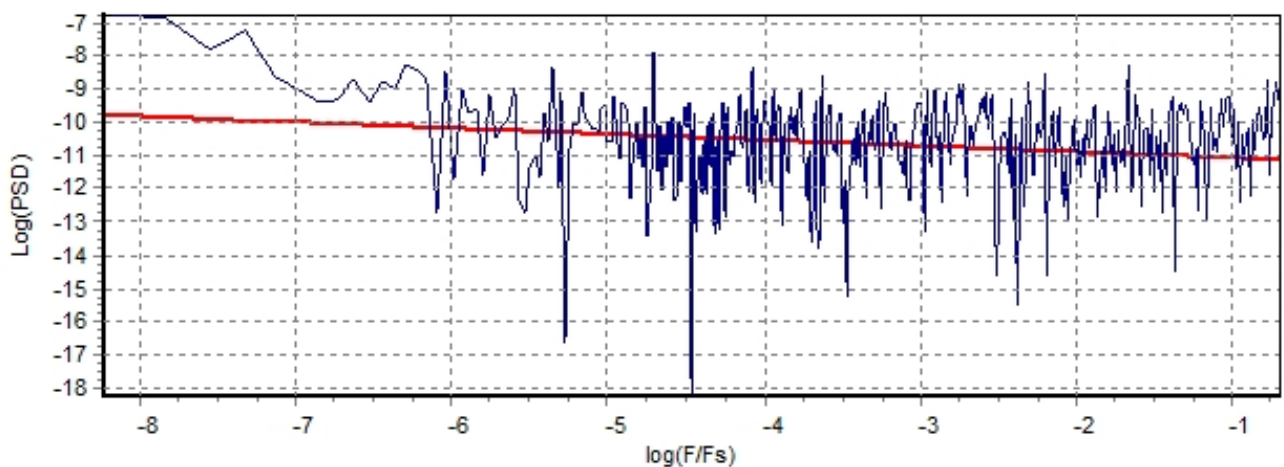


Produced by AlaVar 5.2

Figure 1 : Processed Data

AlaVar 5.2

PSD of Data



Produced by AlaVar 5.2

Figure 2 : Data PSD

The computation of the 3 ALLAN STD DEVs lasted 0.018000 seconds
 The error bars were computed for a : White FM
 The computation of the Error bars lasted 0.001 seconds

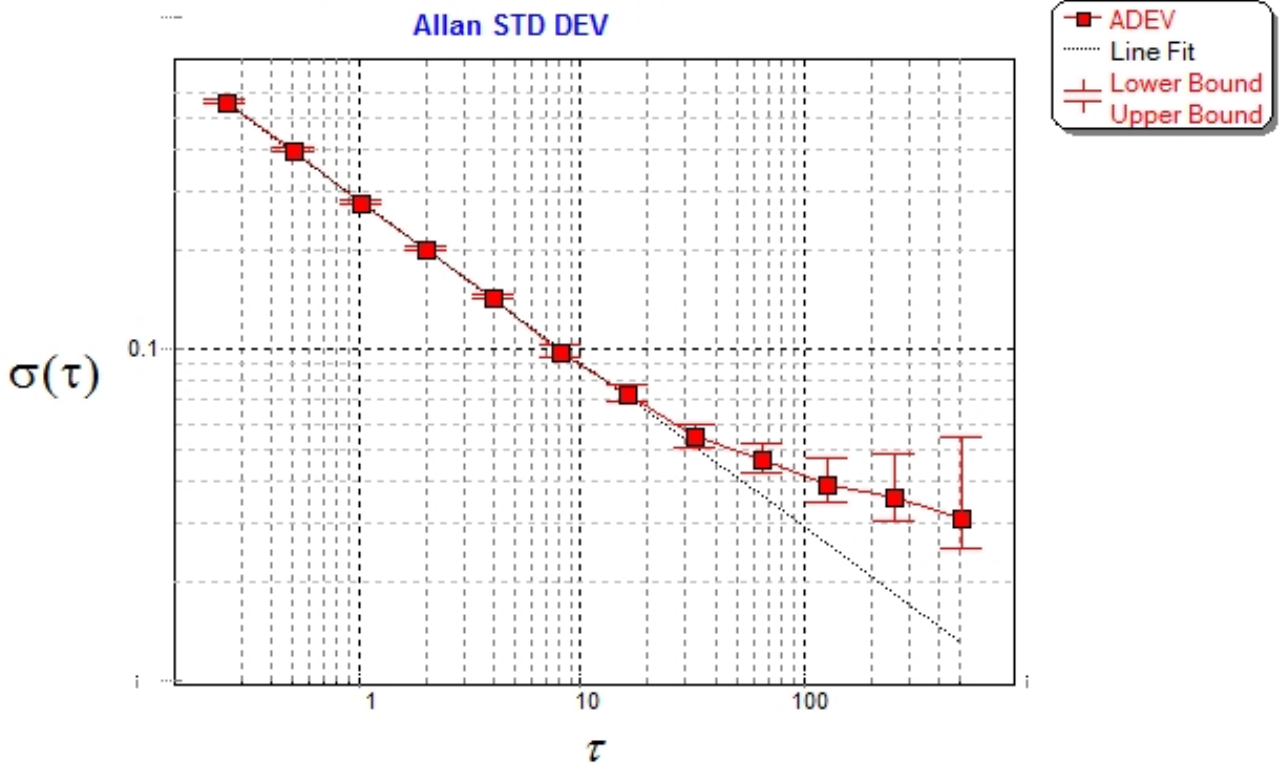
ADEV(tau) was fitted to a line :
 The Solpe of the line is =-0.493676
 The fit result is ADEV(tau=1) = Stability =0.281605

Tau = average Time
 ADEV = Overlapping ALLAN STD DEV.
 ADEV_Min = ADEV lower bound.
 ADEV_Max = ADEV upper bound.
 MDEV = Modified ALLAN STD DEV.
 TDEV = Time ALLAN STD DEV.
 HDEV = Overlapping HADAMARD STD DEV.

Tau	ADEV	ADEV_Min	ADEV_Max	MDEV	TDEV	HDEV
0.25	0.56296	0.55744	0.56865	0.56296	0.081256	0.56249
0.5	0.39887	0.39465	0.40323	0.3144	0.090759	0.40052
1	0.27748	0.27373	0.28138	0.20219	0.11674	0.27651
2	0.20007	0.19638	0.20397	0.14341	0.16559	0.19986
4	0.14229	0.13865	0.14624	0.1013	0.23394	0.14259
8	0.098379	0.094872	0.1023	0.069398	0.32054	0.097501
16	0.073351	0.069728	0.077604	0.052584	0.48575	0.073032
32	0.054833	0.051102	0.05952	0.04183	0.77282	0.05126
64	0.046293	0.041986	0.052269	0.028395	1.0492	0.038347
128	0.038933	0.034019	0.046855	0.027591	2.039	0.024968
256	0.035648	0.029581	0.04813	0.022434	3.3158	0.023817
512	0.030881	0.023805	0.054379	0.010625	3.1409	0.032487

CALLISTO eC194 14.12.2024

Allan STD DEV



Produced by AlaVar 5.2

Figure 3 : Allan Standard Deviation