

# AlaVar generated report

C:\CALLISTO-01\FITfiles\TotalLightcurve.DAT

File 'C:\CALLISTO-01\FITfiles\TotalLightcurve.DAT' created on 14.12.2024 15:33:06

Column # 1 was processed

Data length N = 5400 points.

The mean Value of the processed data = 120.744

The Stanardr Deviation of the processed data = 2.90211

The number of removed outliers is 3

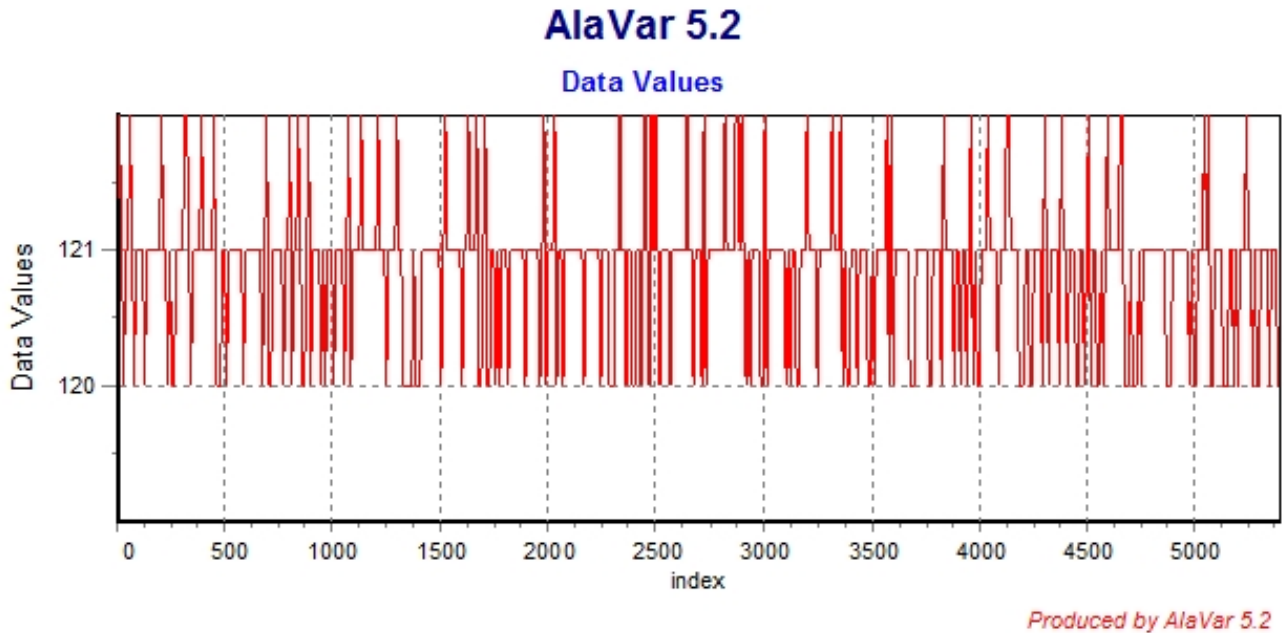


Figure 1 : Processed Data

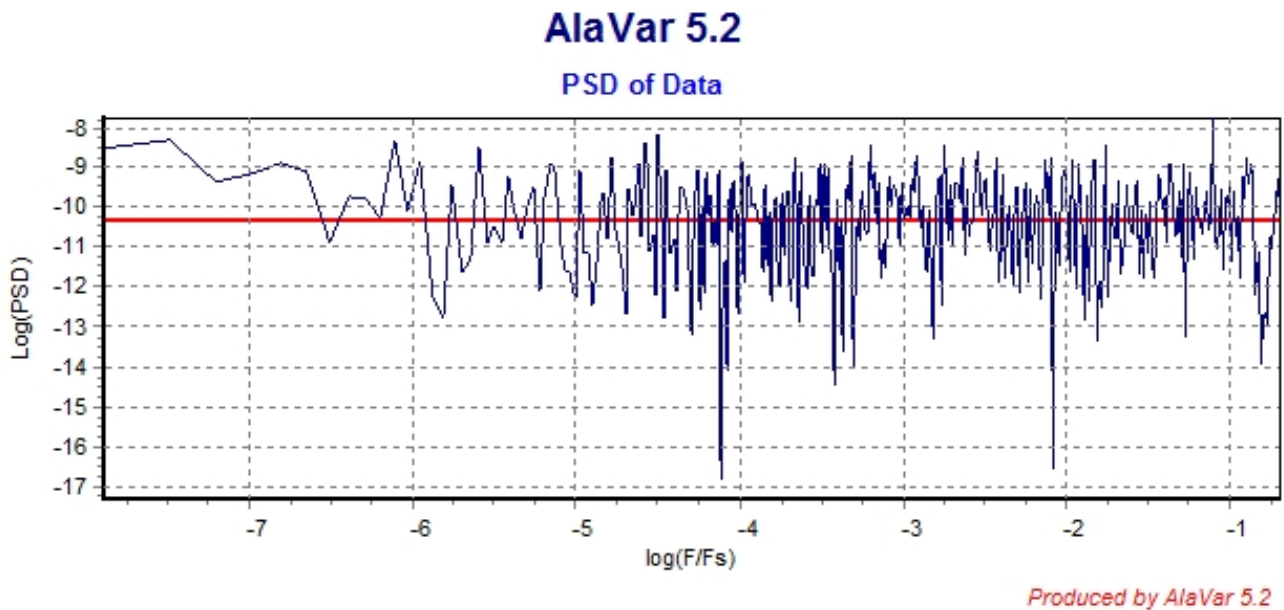


Figure 2 : Data PSD

The computation of the 3 ALLAN STD DEVs lasted 0.017000 seconds  
 The error bars were computed for a : White FM  
 The computation of the Error bars lasted 0.001 seconds

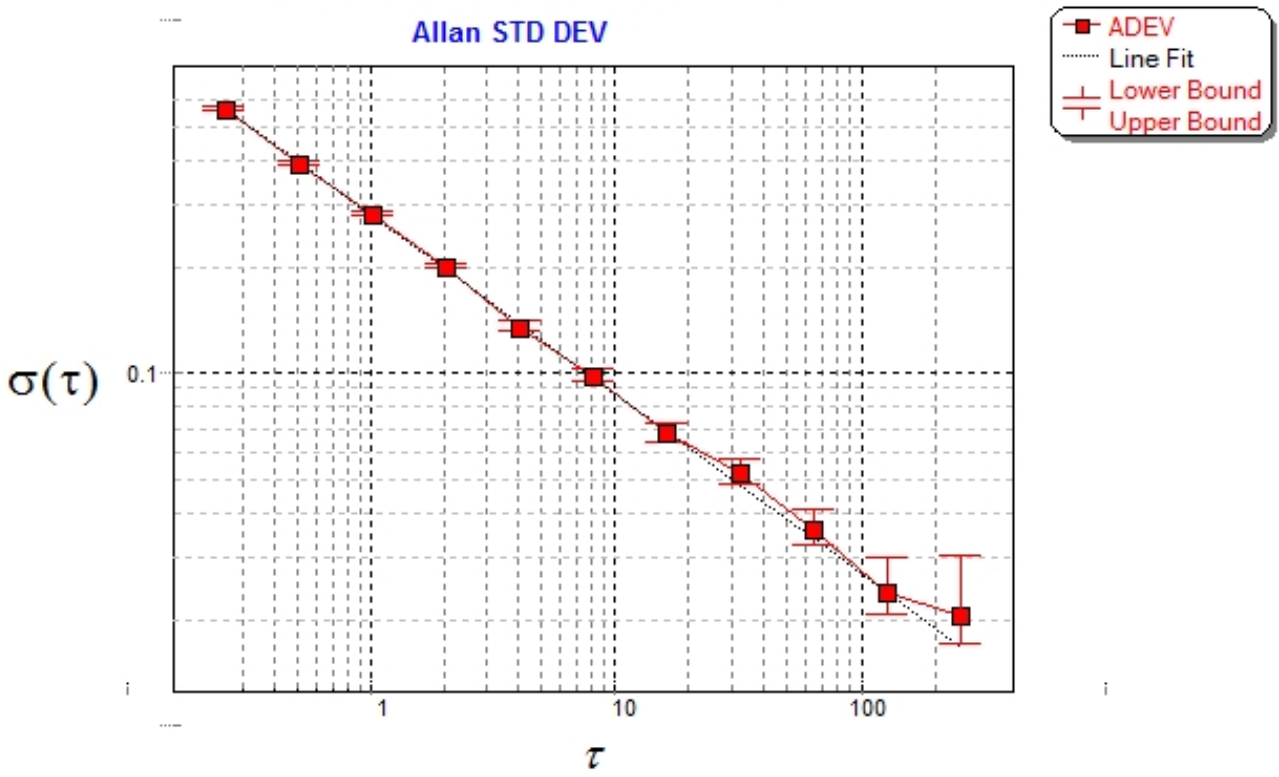
ADEV(tau) was fitted to a line :  
 The Solpe of the line is =-0.507725  
 The fit result is ADEV(tau=1) = Stability =0.279609

Tau = average Time  
 ADEV = Overlapping ALLAN STD DEV.  
 ADEV\_Min = ADEV lower bound.  
 ADEV\_Max = ADEV upper bound.  
 MDEV = Modified ALLAN STD DEV.  
 TDEV = Time ALLAN STD DEV.  
 HDEV = Overlapping HADAMARD STD DEV.

Tau	ADEV	ADEV_Min	ADEV_Max	MDEV	TDEV	HDEV
0.25	0.5636	0.55706	0.57037	0.5636	0.081348	0.56466
0.5	0.39553	0.39059	0.40067	0.31288	0.09032	0.39422
1	0.28249	0.27799	0.28722	0.2055	0.11864	0.2825
2	0.19955	0.19521	0.20419	0.1412	0.16305	0.20171
4	0.1349	0.13083	0.13937	0.095394	0.2203	0.13365
8	0.098082	0.093977	0.10278	0.068897	0.31822	0.098668
16	0.067728	0.063811	0.072466	0.048132	0.44463	0.065902
32	0.051795	0.047684	0.057192	0.036971	0.68304	0.049605
64	0.035766	0.031899	0.041493	0.024635	0.91026	0.036646
128	0.023838	0.020353	0.030065	0.014478	1.0699	0.017799
256	0.020423	0.016403	0.030384	0.0091971	1.3593	0.018793

### CALLISTO eC193 14.12.2024

Allan STD DEV



Produced by AlaVar 5.2

Figure 3 : Allan Standard Deviation