

AlaVar generated report

C:\CALLISTO-01\FITfiles\TotalLightcurve.DAT

File 'C:\CALLISTO-01\FITfiles\TotalLightcurve.DAT' created on 14.12.2024 17:02:12

Column # 1 was processed

Data length N = 9000 points.

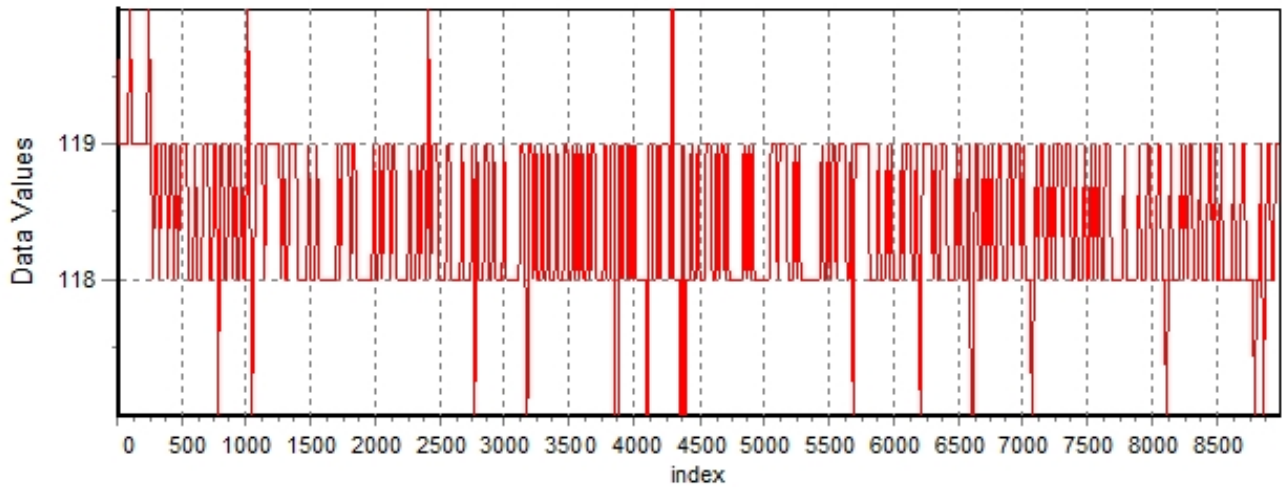
The mean Value of the processed data = 118.331

The Stanadrd Deviation of the processed data = 2.8454

The number of removed outliers is 5

AlaVar 5.2

Data Values

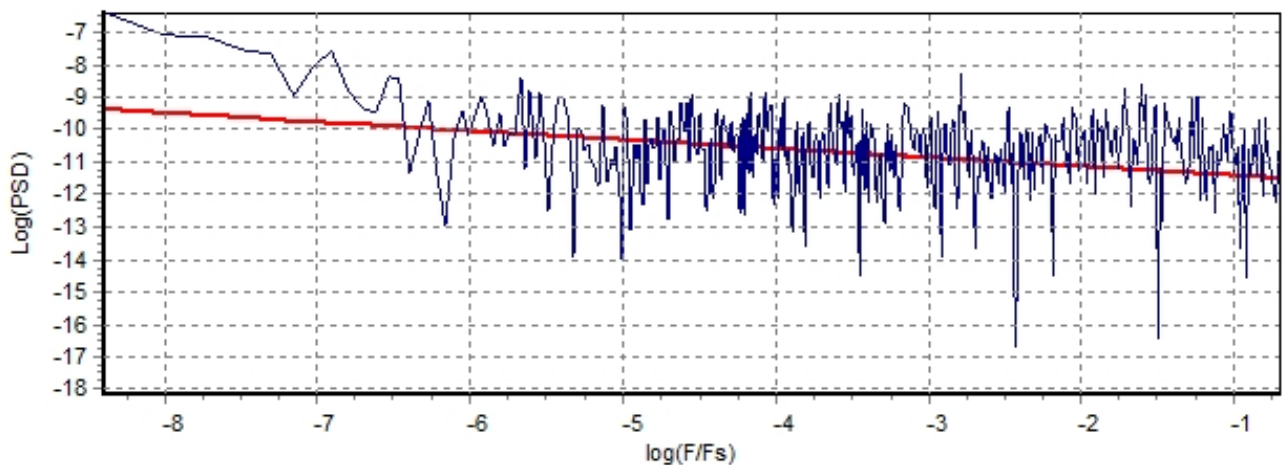


Produced by AlaVar 5.2

Figure 1 : Processed Data

AlaVar 5.2

PSD of Data



Produced by AlaVar 5.2

Figure 2 : Data PSD

The computation of the 3 ALLAN STD DEVs lasted 0.022000 seconds
 The error bars were computed for a : White FM
 The computation of the Error bars lasted 0.001 seconds

ADEV(tau) was fitted to a line :
 The Slope of the line is =-0.479591
 The fit result is ADEV(tau=1) = Stability =0.276711

Tau = average Time
 ADEV = Overlapping ALLAN STD DEV.
 ADEV_Min = ADEV lower bound.
 ADEV_Max = ADEV upper bound.
 MDEV = Modified ALLAN STD DEV.
 TDEV = Time ALLAN STD DEV.
 HDEV = Overlapping HADAMARD STD DEV.

Tau	ADEV	ADEV_Min	ADEV_Max	MDEV	TDEV	HDEV
0.25	0.54327	0.53837	0.5483	0.54327	0.078414	0.54347
0.5	0.38305	0.37932	0.38689	0.30301	0.087471	0.38186
1	0.27345	0.27005	0.27697	0.19971	0.1153	0.27195
2	0.19917	0.19579	0.20273	0.14384	0.16609	0.19801
4	0.1429	0.13953	0.14652	0.10238	0.23643	0.14254
8	0.1027	0.09933	0.10644	0.073358	0.33883	0.10291
16	0.072881	0.069559	0.076729	0.053195	0.49139	0.07056
32	0.057962	0.054317	0.062455	0.040631	0.75067	0.056097
64	0.044831	0.040968	0.050041	0.034428	1.2721	0.037996
128	0.042968	0.037936	0.050735	0.028864	2.1331	0.029868
256	0.041476	0.034917	0.054011	0.02032	3.0033	0.02606
512	0.033431	0.026315	0.053581	0.016861	4.9842	0.027008

CALLISTO eC192 14.12.2024

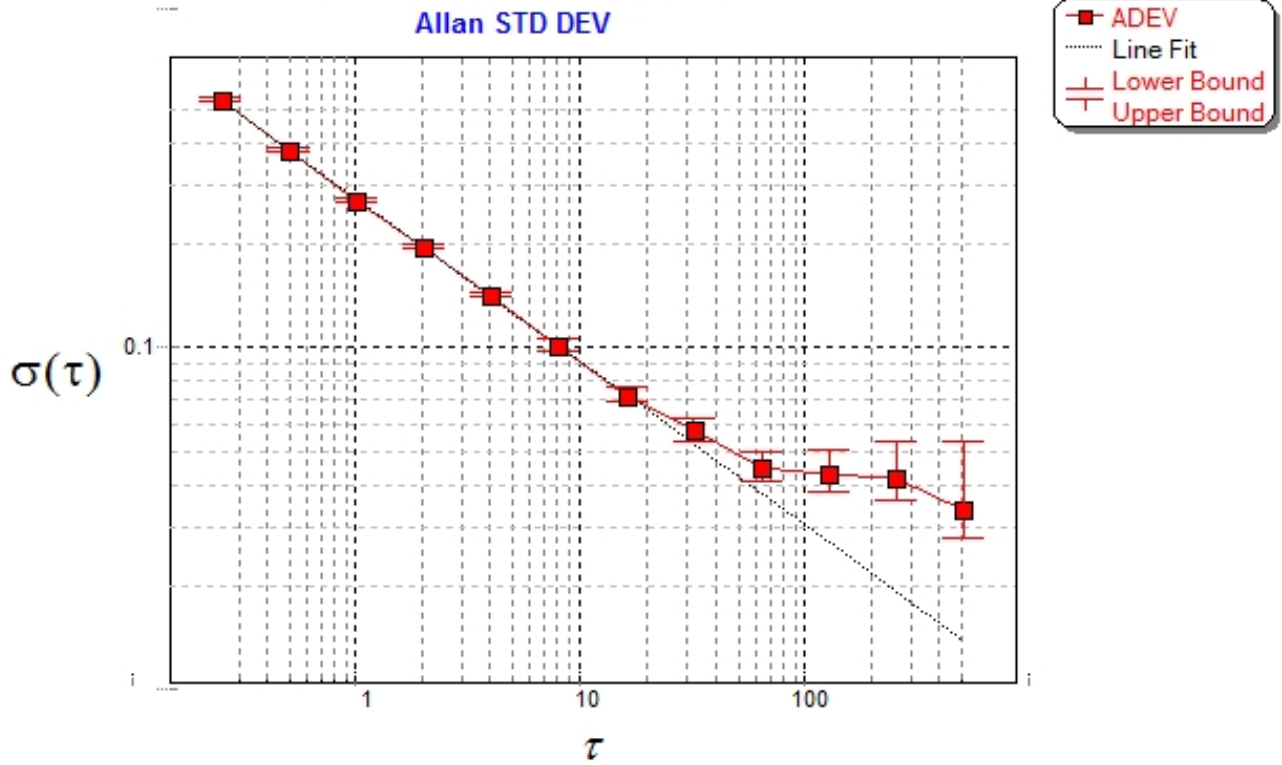


Figure 3 : Allan Standard Deviation