

AlaVar generated report

C:\CALLISTO-01\FITfiles\TotalLightcurve.DAT

File 'C:\CALLISTO-01\FITfiles\TotalLightcurve.DAT' created on 04.11.2024 07:49:36

Column # 1 was processed

Data length N = 69952 points.

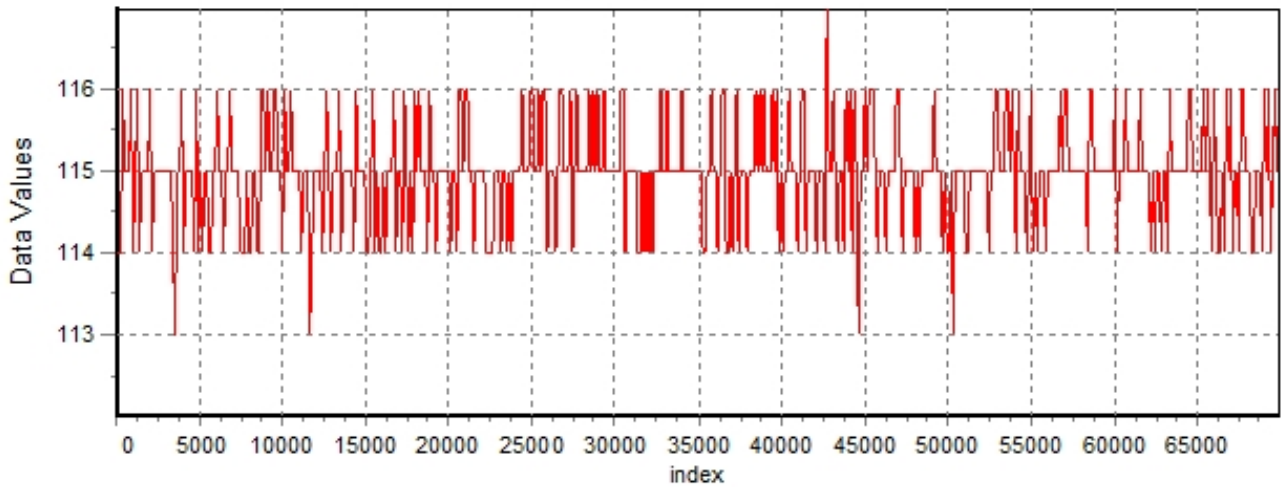
The mean Value of the processed data = 114.916

The Stanardr Deviation of the processed data = 2.77665

The number of removed outliers is 39

AlaVar 5.2

Data Values

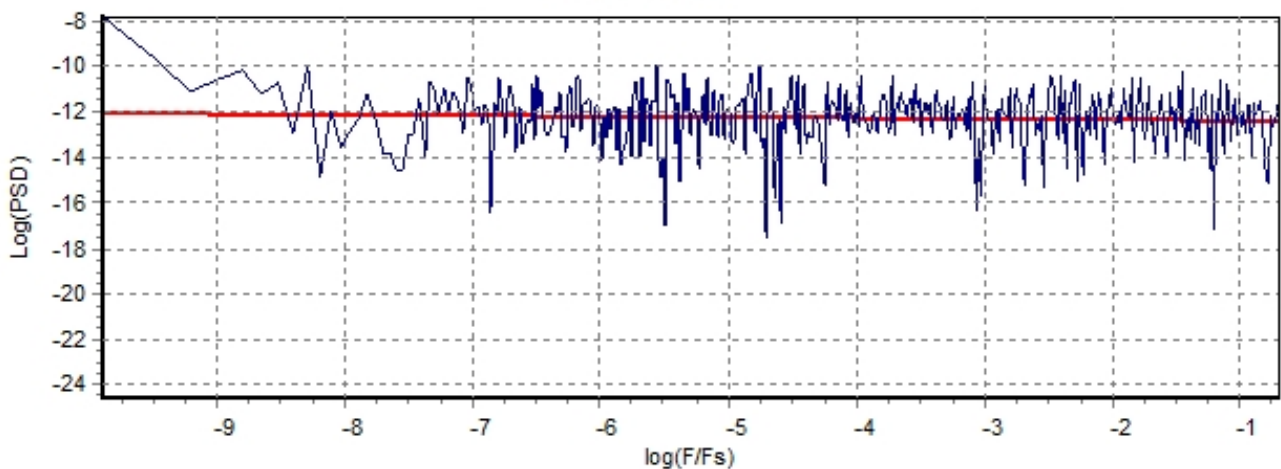


Produced by AlaVar 5.2

Figure 1 : Processed Data

AlaVar 5.2

PSD of Data



Produced by AlaVar 5.2

Figure 2 : Data PSD

The computation of the 3 ALLAN STD DEVS lasted 0.036000 seconds
 The error bars were computed for a : White FM
 The computation of the Error bars lasted 0.001 seconds

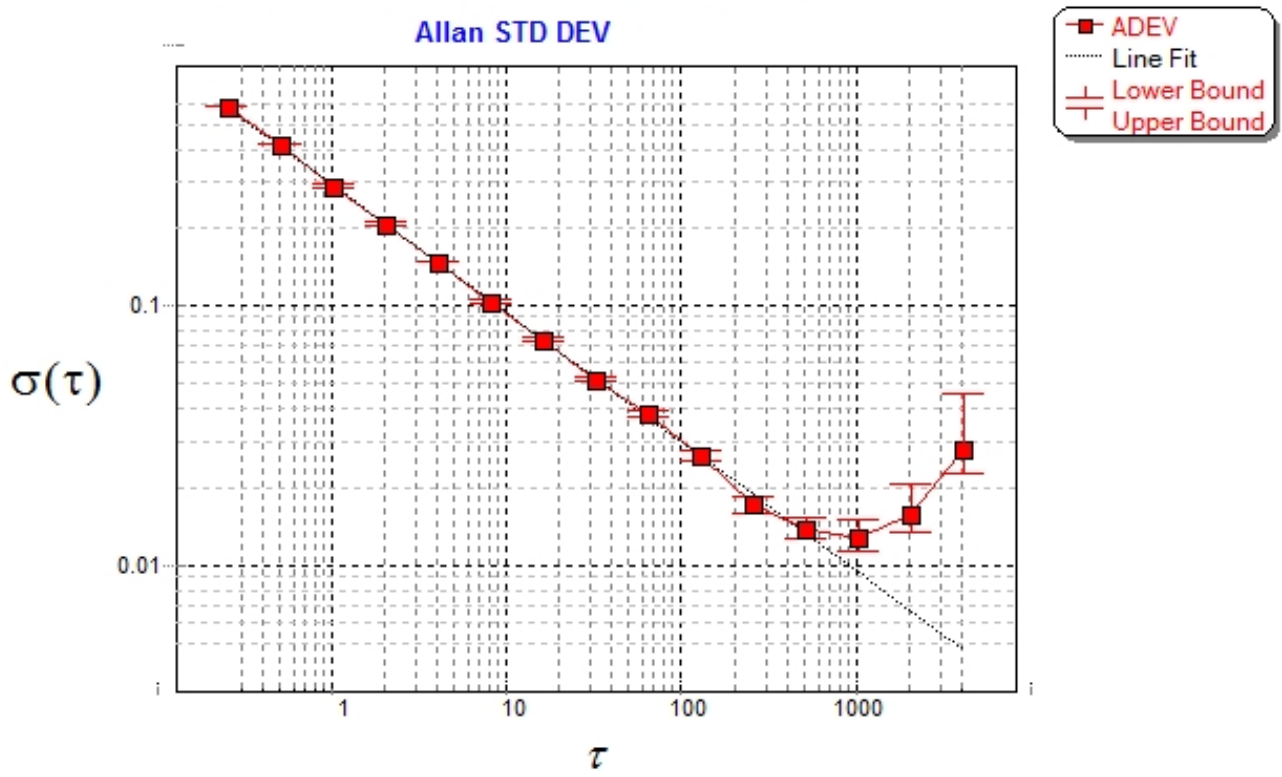
ADEV(tau) was fitted to a line :
 The Solpe of the line is =-0.496132
 The fit result is ADEV(tau=1) = Stability =0.291572

Tau = average Time
 ADEV = Overlapping ALLAN STD DEV.
 ADEV_Min = ADEV lower bound.
 ADEV_Max = ADEV upper bound.
 MDEV = Modified ALLAN STD DEV.
 TDEV = Time ALLAN STD DEV.
 HDEV = Overlapping HADAMARD STD DEV.

Tau	ADEV	ADEV_Min	ADEV_Max	MDEV	TDEV	HDEV
0.25	0.58355	0.58165	0.58548	0.58355	0.084229	0.58291
0.5	0.41446	0.413	0.41594	0.32747	0.094533	0.41539
1	0.2902	0.2889	0.29153	0.21128	0.12198	0.29008
2	0.20615	0.20488	0.20745	0.14699	0.16972	0.20634
4	0.14563	0.14437	0.14692	0.10344	0.23889	0.14538
8	0.10376	0.1025	0.10507	0.073647	0.34016	0.10365
16	0.073059	0.071814	0.074371	0.051381	0.47464	0.073135
32	0.051575	0.050345	0.0529	0.036681	0.67768	0.051134
64	0.037846	0.036587	0.039245	0.026913	0.99446	0.037931
128	0.026291	0.025076	0.0277	0.018507	1.3677	0.026724
256	0.017218	0.016121	0.018575	0.012199	1.803	0.016614
512	0.013614	0.012426	0.015224	0.0099243	2.9337	0.012784
1024	0.012739	0.011228	0.015087	0.010837	6.4068	0.010685
2048	0.015654	0.013147	0.0205	0.014862	17.574	0.007461
4096	0.027966	0.021938	0.04545	0.02509	59.333	0.007796

CALLISTO eC190 04-11-2024

Allan STD DEV



Produced by AlaVar 5.2

Figure 3 : Allan Standard Deviation