

# AlaVar generated report

C:\CALLISTO-01\FITfiles\TotalLightcurve.DAT

File 'C:\CALLISTO-01\FITfiles\TotalLightcurve.DAT' created on 03.11.2024 21:46:10

Column # 1 was processed

Data length N = 28710 points.

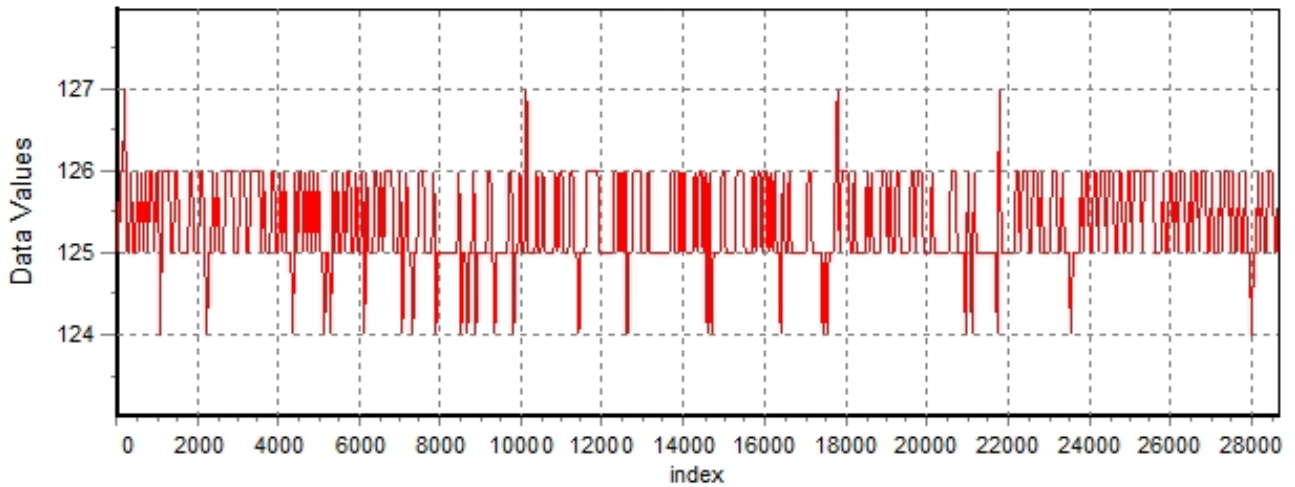
The mean Value of the processed data = 125.273

The Stanadrd Deviation of the processed data = 3.01613

The number of removed outliers is 16

## AlaVar 5.2

### Data Values

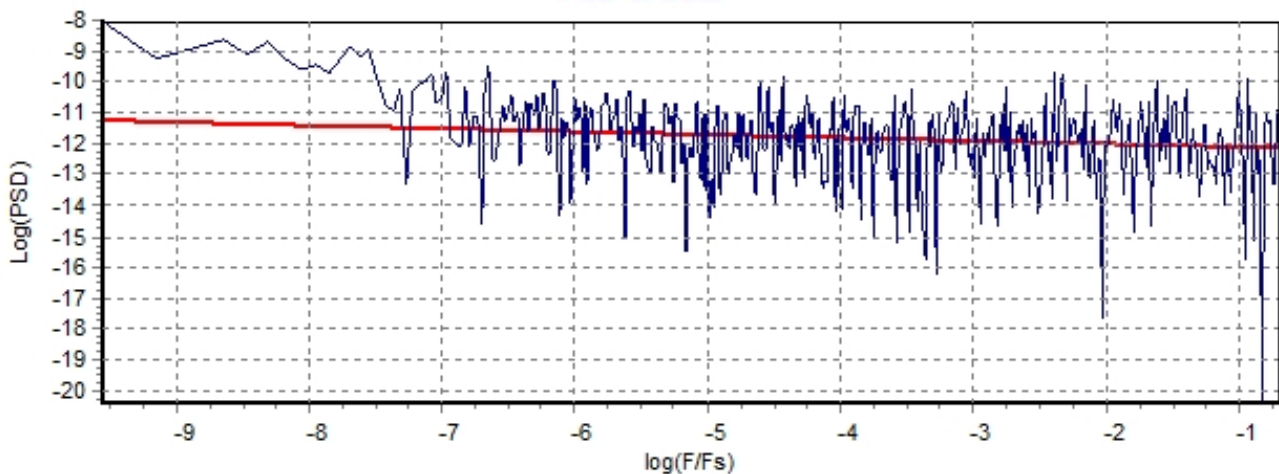


Produced by AlaVar 5.2

Figure 1 : Processed Data

## AlaVar 5.2

### PSD of Data



Produced by AlaVar 5.2

Figure 2 : Data PSD

The computation of the 3 ALLAN STD DEVs lasted 0.016000 seconds  
 The error bars were computed for a : White FM  
 The computation of the Error bars lasted 0 seconds

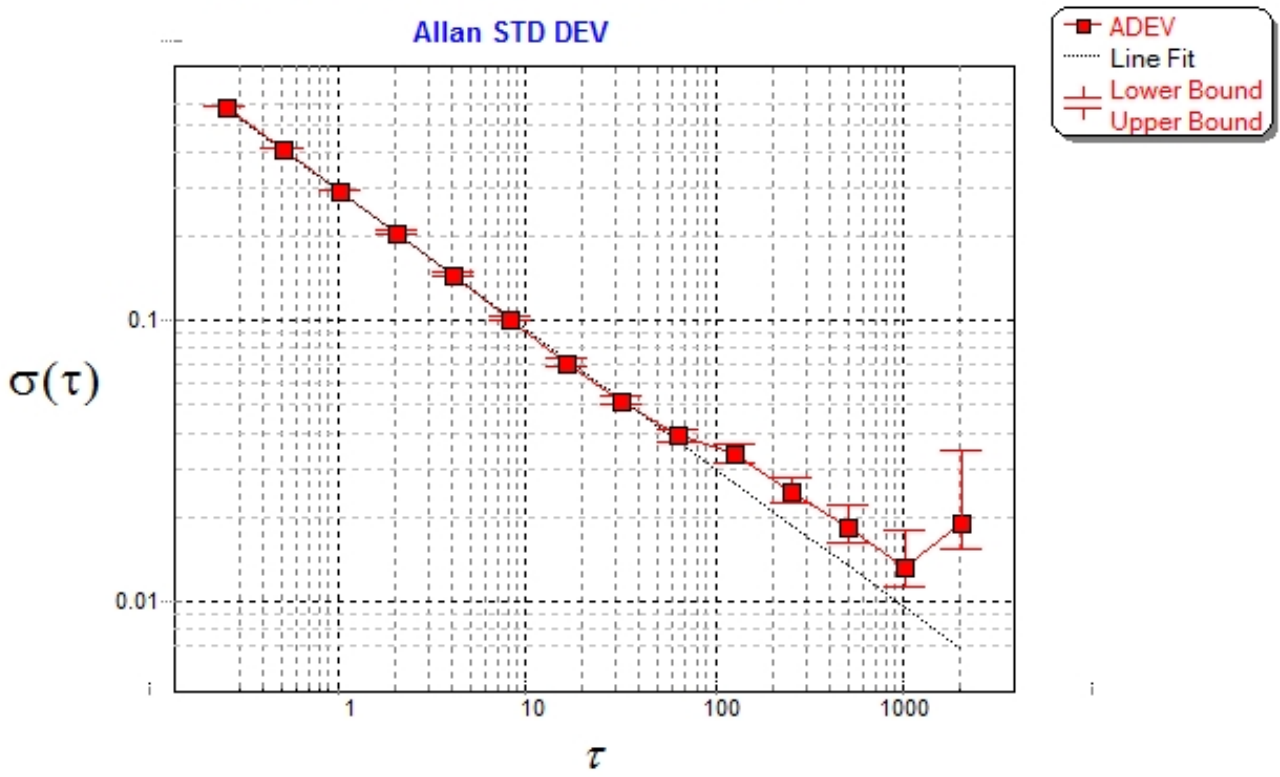
ADEV(tau) was fitted to a line :  
 The Solpe of the line is =-0.494715  
 The fit result is ADEV(tau=1) = Stability =0.291585

Tau = average Time  
 ADEV = Overlapping ALLAN STD DEV.  
 ADEV\_Min = ADEV lower bound.  
 ADEV\_Max = ADEV upper bound.  
 MDEV = Modified ALLAN STD DEV.  
 TDEV = Time ALLAN STD DEV.  
 HDEV = Overlapping HADAMARD STD DEV.

Tau	ADEV	ADEV_Min	ADEV_Max	MDEV	TDEV	HDEV
0.25	0.58441	0.58144	0.58742	0.58441	0.084352	0.58516
0.5	0.41178	0.40953	0.41408	0.32573	0.09403	0.41146
1	0.29334	0.29129	0.29544	0.21448	0.12383	0.29317
2	0.20826	0.20626	0.21032	0.14897	0.17201	0.20841
4	0.14667	0.14471	0.14872	0.10383	0.23979	0.1468
8	0.10229	0.10037	0.10432	0.071129	0.32853	0.10289
16	0.070947	0.069085	0.072968	0.050069	0.46251	0.070808
32	0.051757	0.049865	0.053882	0.037257	0.68832	0.050343
64	0.039246	0.037258	0.04159	0.027973	1.0336	0.036005
128	0.033689	0.031339	0.036662	0.022803	1.6851	0.027249
256	0.024667	0.022316	0.027961	0.013938	2.06	0.019384
512	0.018459	0.016073	0.022363	0.0090943	2.6883	0.014288
1024	0.013155	0.010862	0.017994	0.010683	6.316	0.010352
2048	0.019063	0.014591	0.034839	0.019432	22.977	0.011714

### CALLISTO eC189 03-11-2024

Allan STD DEV



Produced by AlaVar 5.2

Figure 3 : Allan Standard Deviation