

AlaVar generated report

C:\CALLISTO-01\FITfiles\TotalLightcurve.DAT

File 'C:\CALLISTO-01\FITfiles\TotalLightcurve.DAT' created on 13.04.2024 16:58:28

Column # 1 was processed

Data length N = 5400 points.

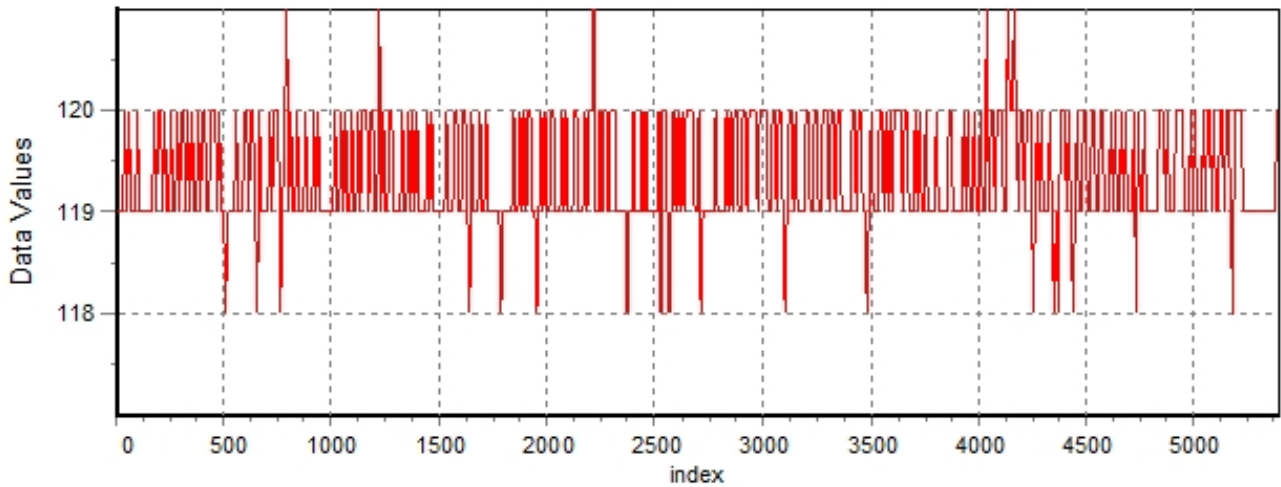
The mean Value of the processed data = 119.311

The Stanardr Deviation of the processed data = 2.87025

The number of removed outliers is 3

AlaVar 5.2

Data Values

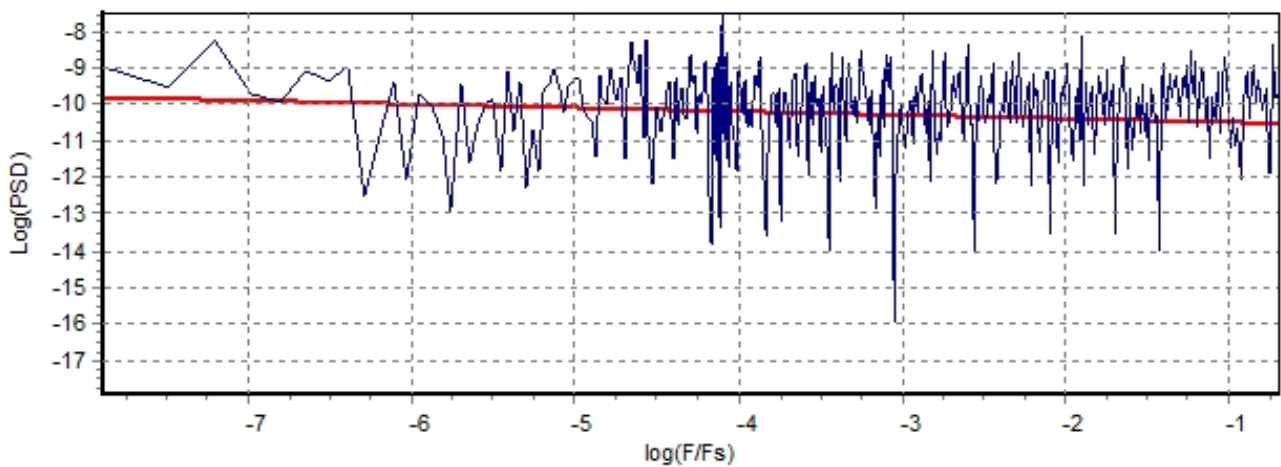


Produced by AlaVar 5.2

Figure 1 : Processed Data

AlaVar 5.2

PSD of Data



Produced by AlaVar 5.2

Figure 2 : Data PSD

The computation of the 3 ALLAN STD DEVS lasted 0.016000 seconds
 The error bars were computed for a : White FM
 The computation of the Error bars lasted 0.001 seconds

ADEV(tau) was fitted to a line :
 The Solpe of the line is =-0.484321
 The fit result is ADEV(tau=1) = Stability =0.287036

Tau = average Time
 ADEV = Overlapping ALLAN STD DEV.
 ADEV_Min = ADEV lower bound.
 ADEV_Max = ADEV upper bound.
 MDEV = Modified ALLAN STD DEV.
 TDEV = Time ALLAN STD DEV.
 HDEV = Overlapping HADAMARD STD DEV.

Tau	ADEV	ADEV_Min	ADEV_Max	MDEV	TDEV	HDEV
0.25	0.56737	0.56079	0.57418	0.56737	0.081892	0.56717
0.5	0.40279	0.39775	0.40802	0.31838	0.091908	0.40445
1	0.28104	0.27656	0.28575	0.20479	0.11824	0.28088
2	0.20077	0.1964	0.20544	0.14429	0.16662	0.19903
4	0.14827	0.1438	0.15319	0.1085	0.25057	0.14546
8	0.1105	0.10588	0.11579	0.078203	0.36121	0.1121
16	0.07247	0.068279	0.07754	0.048475	0.4478	0.074986
32	0.043728	0.040258	0.048285	0.030041	0.55502	0.042521
64	0.036361	0.032429	0.042183	0.027526	1.0171	0.034952
128	0.030827	0.02632	0.038879	0.02397	1.7714	0.03089
256	0.020549	0.016504	0.030571	0.01146	1.6938	0.01746

CALLISTO eC179 13.04.2024

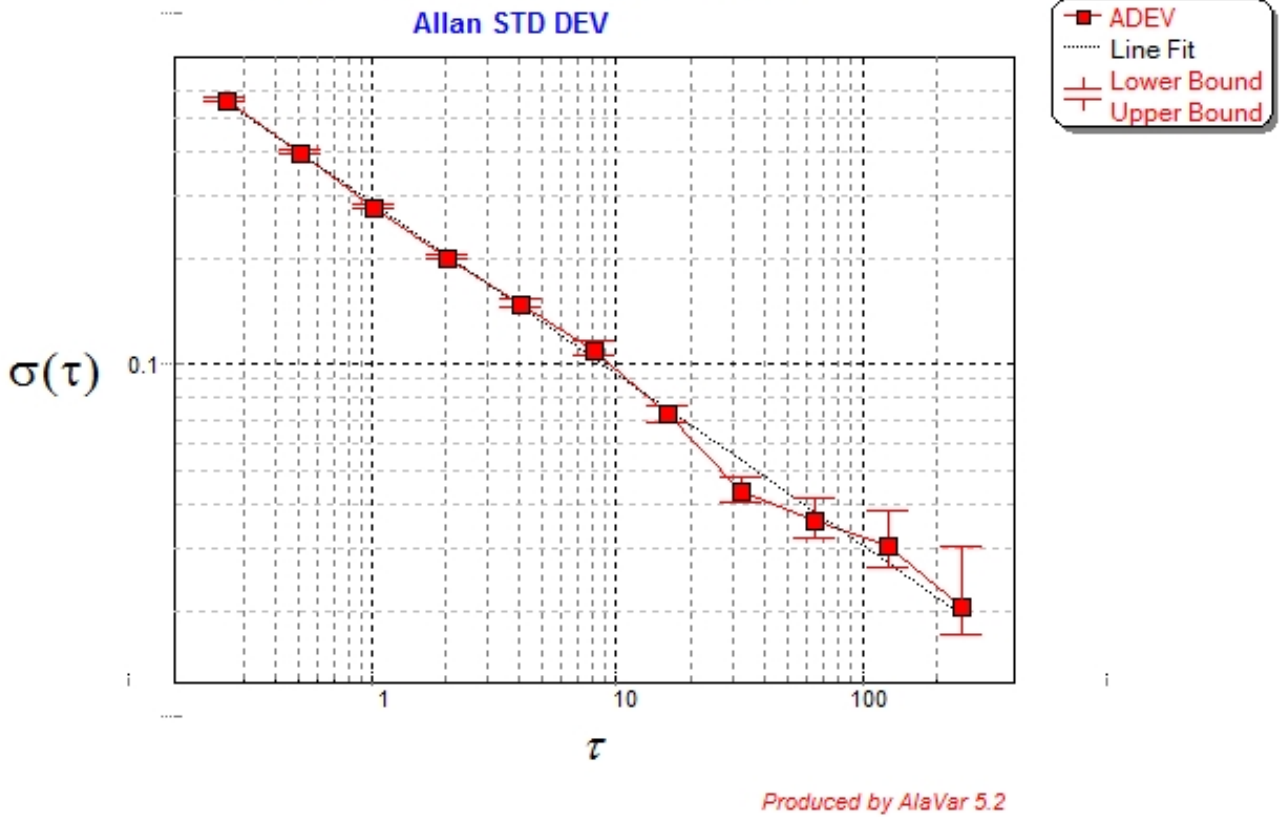


Figure 3 : Allan Standard Deviation