

# AlaVar generated report

C:\CALLISTO-01\FITfiles\TotalLightCurve100.prn

File 'C:\CALLISTO-01\FITfiles\TotalLightCurve100.prn' created on 02.03.2024 21:48:36

Column # 1 was processed

Data length N = 5400 points.

The mean Value of the processed data = 139.071

The Stanadrd Deviation of the processed data = 3.33132

The number of removed outliers is 3

## AlaVar 5.2

### Data Values

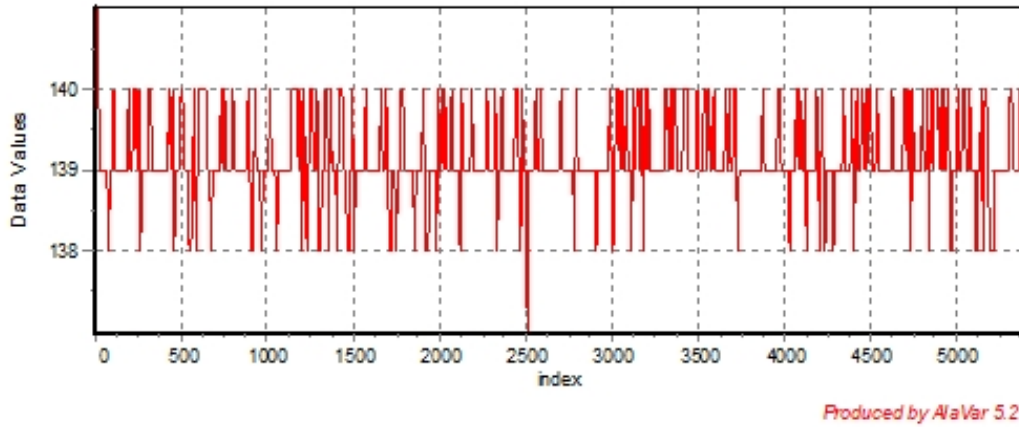


Figure 1 : Processed Data

## AlaVar 5.2

### PSD of Data

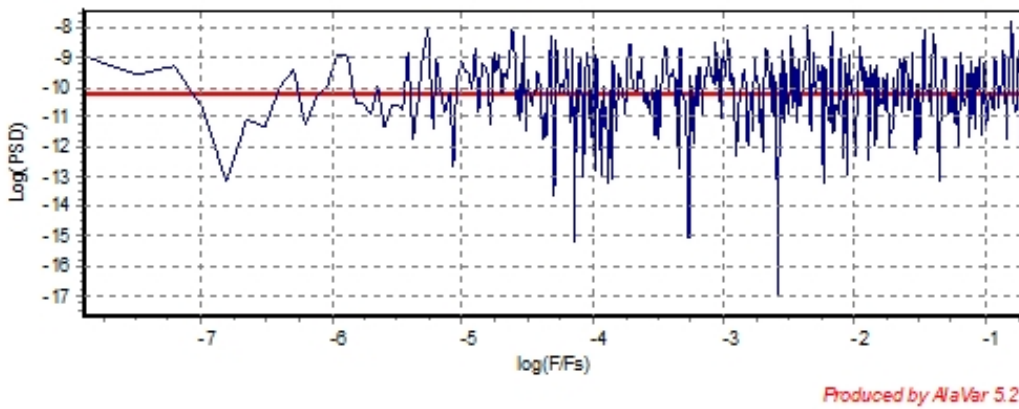


Figure 2 : Data PSD

The computation of the 3 ALLAN STD DEVs lasted 0.173000 seconds  
 The error bars were computed for a : White FM  
 The computation of the Error bars lasted 0 seconds

ADEV(tau) was fitted to a line :  
 The Solpe of the line is =-0.513341  
 The fit result is ADEV(tau=1) = Stability =0.295626

Tau = average Time  
 ADEV = Overlapping ALLAN STD DEV.  
 ADEV\_Min = ADEV lower bound.  
 ADEV\_Max = ADEV upper bound.  
 MDEV = Modified ALLAN STD DEV.  
 TDEV = Time ALLAN STD DEV.  
 HDEV = Overlapping HADAMARD STD DEV.

Tau	ADEV	ADEV_Min	ADEV_Max	MDEV	TDEV	HDEV
0.25	0.58608	0.57929	0.59312	0.58608	0.084594	0.58514
0.5	0.41876	0.41352	0.4242	0.33158	0.095719	0.41983
1	0.29291	0.28824	0.29781	0.2125	0.12268	0.2942
2	0.20358	0.19915	0.20831	0.14507	0.16751	0.20288
4	0.14685	0.14242	0.15172	0.10482	0.24208	0.14591
8	0.10893	0.10438	0.11415	0.079378	0.36663	0.1079
16	0.078325	0.073796	0.083805	0.05434	0.50197	0.08069
32	0.048316	0.044481	0.05335	0.032899	0.60782	0.048326
64	0.032189	0.028709	0.037344	0.020091	0.74235	0.03259
128	0.022552	0.019255	0.028442	0.018002	1.3304	0.019513
256	0.024782	0.019904	0.03687	0.015689	2.3189	0.02264

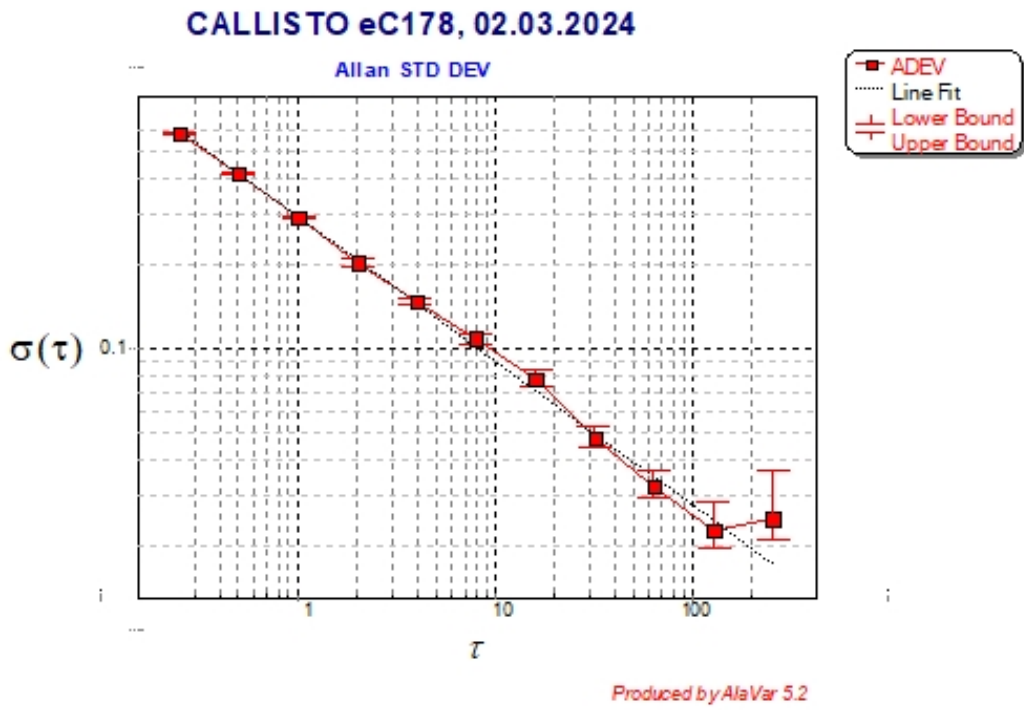


Figure 3 : Allan Standard Deviation