

AlaVar generated report

C:\CALLISTO-01\FITfiles\TotalLightCurve100.prn

File 'C:\CALLISTO-01\FITfiles\TotalLightCurve100.prn' created on 02.03.2024 19:20:36

Column # 1 was processed

Data length N = 3600 points.

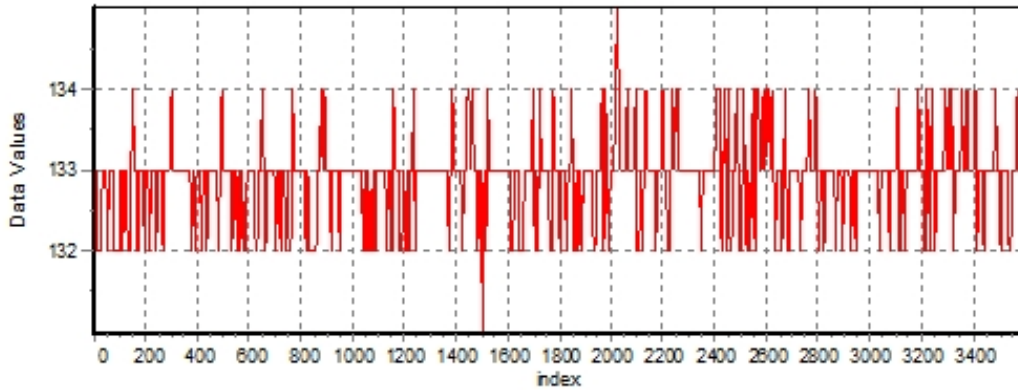
The mean Value of the processed data = 132.802

The Stanadr Deviation of the processed data = 3.19102

The number of removed outliers is 2

AlaVar 5.2

Data Values

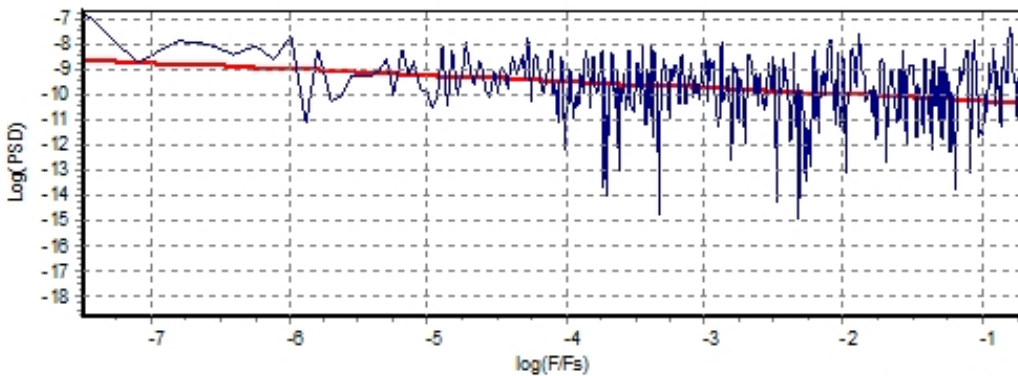


Produced by AlaVar 5.2

Figure 1 : Processed Data

AlaVar 5.2

PSD of Data



Produced by AlaVar 5.2

Figure 2 : Data PSD

The computation of the 3 ALLAN STD DEVs lasted 0.169000 seconds
 The error bars were computed for a : White FM
 The computation of the Error bars lasted 0 seconds

ADEV(tau) was fitted to a line :
 The Slope of the line is =-0.50479
 The fit result is ADEV(tau=1) = Stability =0.304729

Tau = average Time
 ADEV = Overlapping ALLAN STD DEV.
 ADEV_Min = ADEV lower bound.
 ADEV_Max = ADEV upper bound.
 MDEV = Modified ALLAN STD DEV.
 TDEV = Time ALLAN STD DEV.
 HDEV = Overlapping HADAMARD STD DEV.

| Tau | ADEV | ADEV_Min | ADEV_Max | MDEV | TDEV | HDEV |
|------|----------|----------|----------|----------|----------|----------|
| 0.25 | 0.60659 | 0.59801 | 0.61554 | 0.60659 | 0.087553 | 0.60541 |
| 0.5 | 0.43279 | 0.42619 | 0.43971 | 0.34342 | 0.099138 | 0.43171 |
| 1 | 0.30697 | 0.301 | 0.3133 | 0.22226 | 0.12832 | 0.30763 |
| 2 | 0.21369 | 0.20804 | 0.21983 | 0.15083 | 0.17417 | 0.2146 |
| 4 | 0.14845 | 0.14302 | 0.15455 | 0.10586 | 0.24448 | 0.14664 |
| 8 | 0.11088 | 0.10527 | 0.1175 | 0.077984 | 0.36019 | 0.10945 |
| 16 | 0.078092 | 0.072652 | 0.08497 | 0.053928 | 0.49817 | 0.079923 |
| 32 | 0.050435 | 0.045634 | 0.057158 | 0.032471 | 0.5999 | 0.045709 |
| 64 | 0.034862 | 0.030361 | 0.042218 | 0.024429 | 0.90265 | 0.031524 |
| 128 | 0.03265 | 0.026968 | 0.044625 | 0.026915 | 1.989 | 0.03048 |
| 256 | 0.043744 | 0.033497 | 0.079756 | 0.04489 | 6.6349 | 0.016175 |

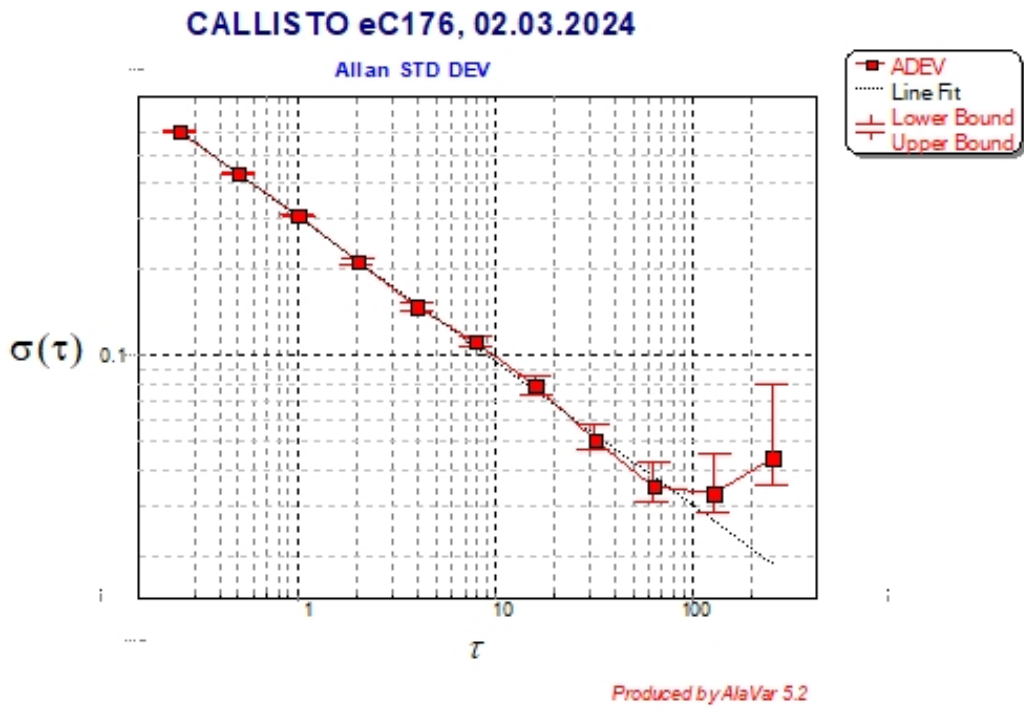


Figure 3 : Allan Standard Deviation