

# AlaVar generated report

C:\CALLISTO-01\FITfiles\TotalLightcurve.DAT

File 'C:\CALLISTO-01\FITfiles\TotalLightcurve.DAT' created on 24.08.2022 14:27:24

Column # 1 was processed

Data length N = 15430 points.

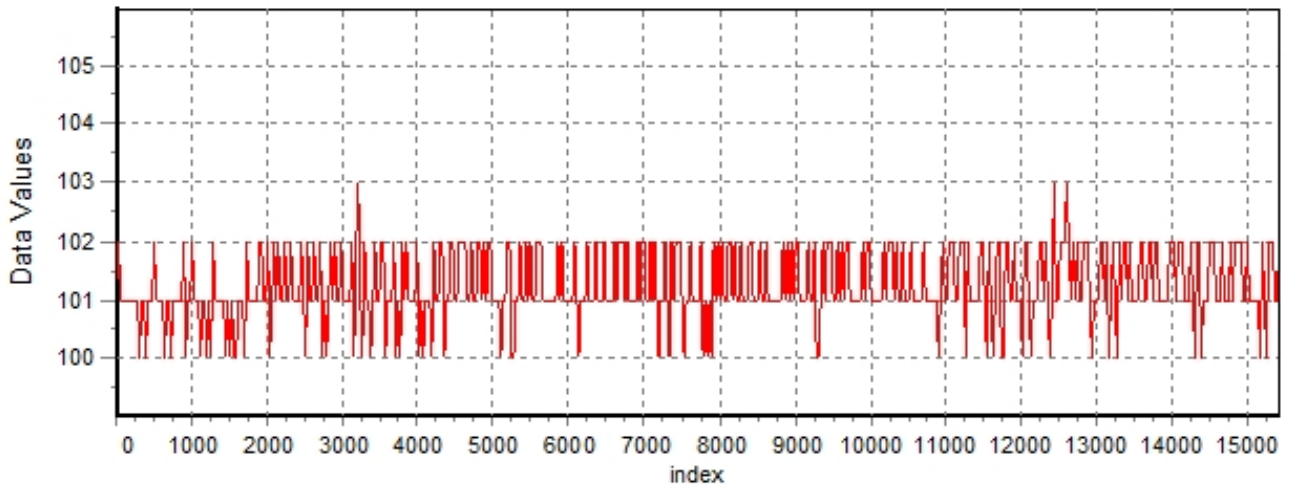
The mean Value of the processed data = 101.198

The Stanardr Deviation of the processed data = 2.08383

The number of removed outliers is 6

## AlaVar 5.2

### Data Values

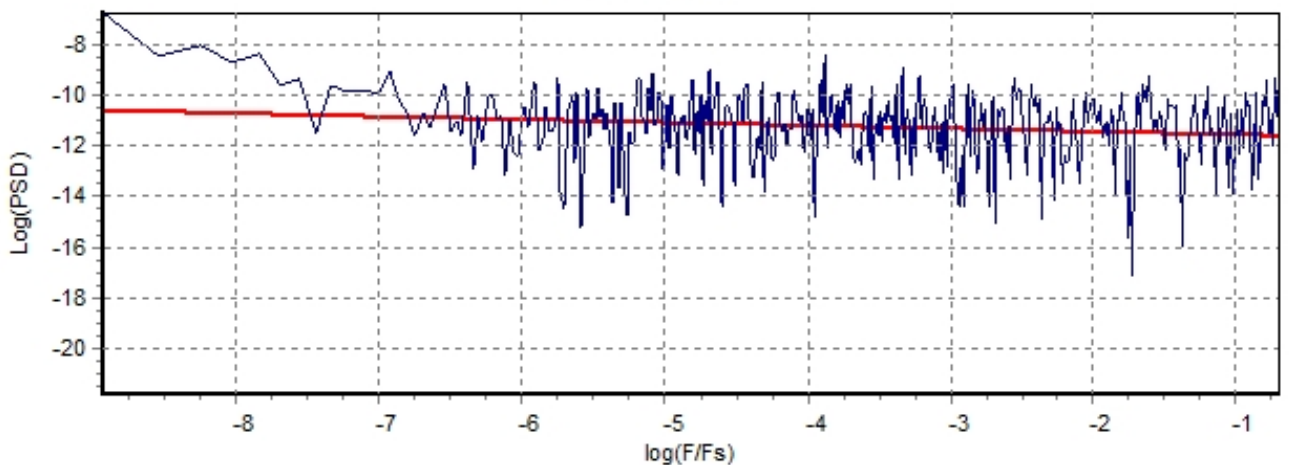


*Produced by AlaVar 5.2*

Figure 1 : Processed Data

## AlaVar 5.2

### PSD of Data



*Produced by AlaVar 5.2*

Figure 2 : Data PSD

The computation of the 3 ALLAN STD DEVs lasted 0.015000 seconds  
 The error bars were computed for a : White FM  
 The computation of the Error bars lasted 0.001 seconds

ADEV(tau) was fitted to a line :  
 The Solpe of the line is =-0.49583  
 The fit result is ADEV(tau=1) = Stability =0.301667

Tau = average Time  
 ADEV = Overlapping ALLAN STD DEV.  
 ADEV\_Min = ADEV lower bound.  
 ADEV\_Max = ADEV upper bound.  
 MDEV = Modified ALLAN STD DEV.  
 TDEV = Time ALLAN STD DEV.  
 HDEV = Overlapping HADAMARD STD DEV.

Tau	ADEV	ADEV_Min	ADEV_Max	MDEV	TDEV	HDEV
0.25	0.6108	0.60658	0.61511	0.6108	0.088162	0.61336
0.5	0.42487	0.42171	0.42811	0.33536	0.096809	0.42486
1	0.29997	0.29711	0.30291	0.21745	0.12554	0.30124
2	0.20817	0.20546	0.21099	0.14782	0.17069	0.20772
4	0.14933	0.14662	0.1522	0.10643	0.24578	0.14831
8	0.10873	0.10597	0.11171	0.078678	0.3634	0.1073
16	0.079747	0.07693	0.082898	0.055983	0.51715	0.081041
32	0.052873	0.050284	0.055909	0.037319	0.68948	0.051938
64	0.040247	0.037531	0.043653	0.029252	1.0809	0.039919
128	0.029869	0.027112	0.033682	0.021139	1.5622	0.028786
256	0.025387	0.022207	0.030489	0.019224	2.8413	0.016624
512	0.026585	0.022094	0.035748	0.018953	5.6026	0.01637
1024	0.037591	0.029042	0.065464	0.034205	20.222	0.02248

### CALLISTO eC170, 24.08.2022

Allan STD DEV

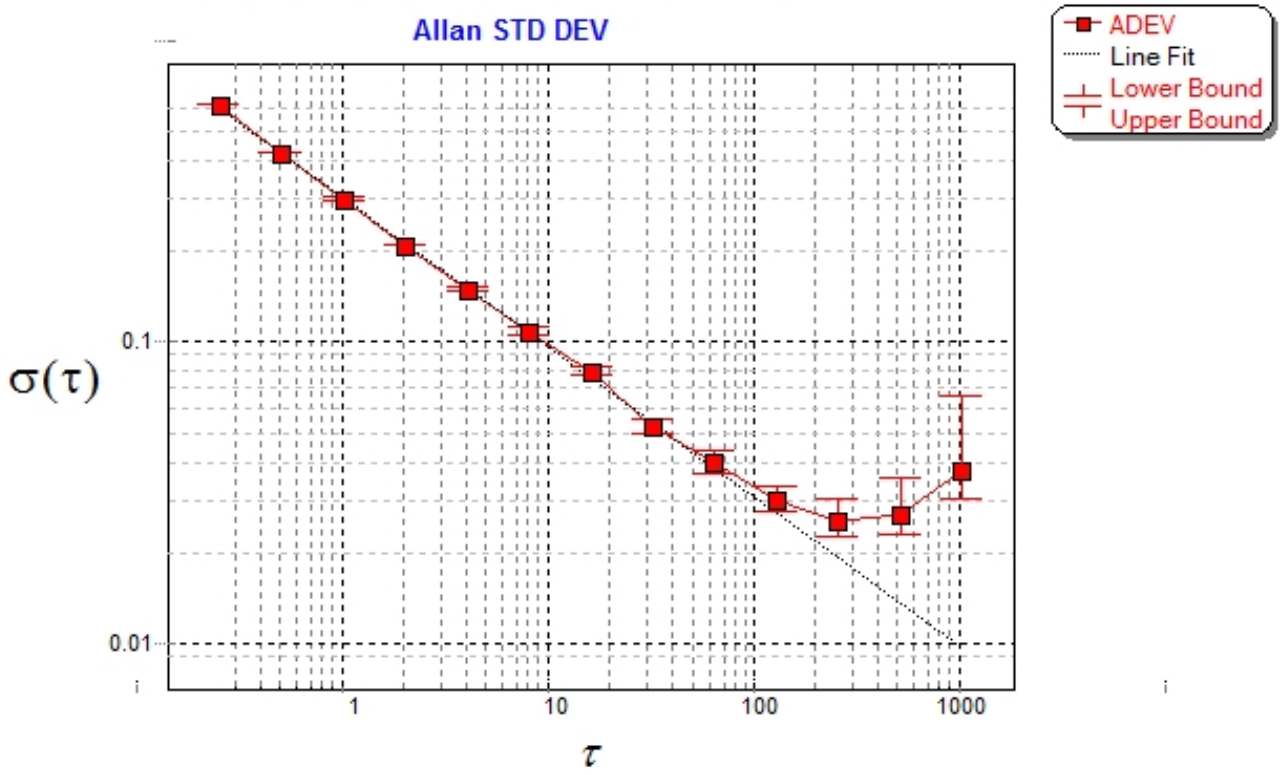


Figure 3 : Allan Standard Deviation