

AlaVar generated report

C:\CALLISTO-01\FITfiles\TotalLightcurve.DAT

File 'C:\CALLISTO-01\FITfiles\TotalLightcurve.DAT' created on 24.08.2022 12:14:48

Column # 1 was processed

Data length N = 4336 points.

The mean Value of the processed data = 109.079

The Stanardr Deviation of the processed data = 2.93457

The number of removed outliers is 3

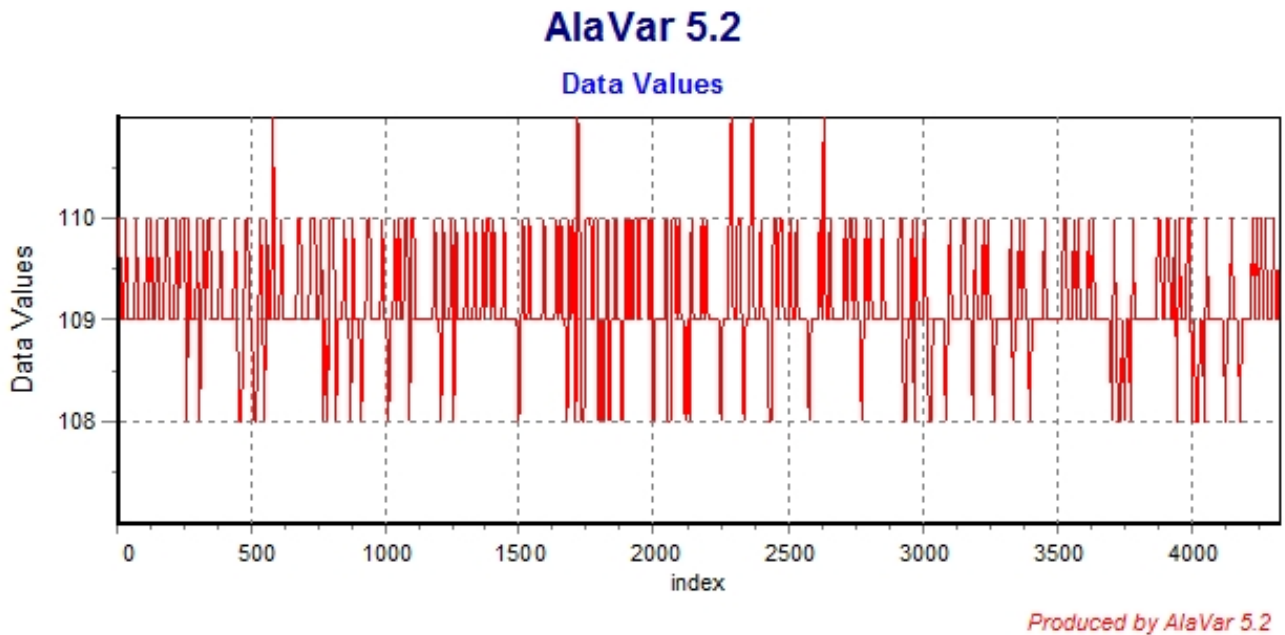


Figure 1 : Processed Data

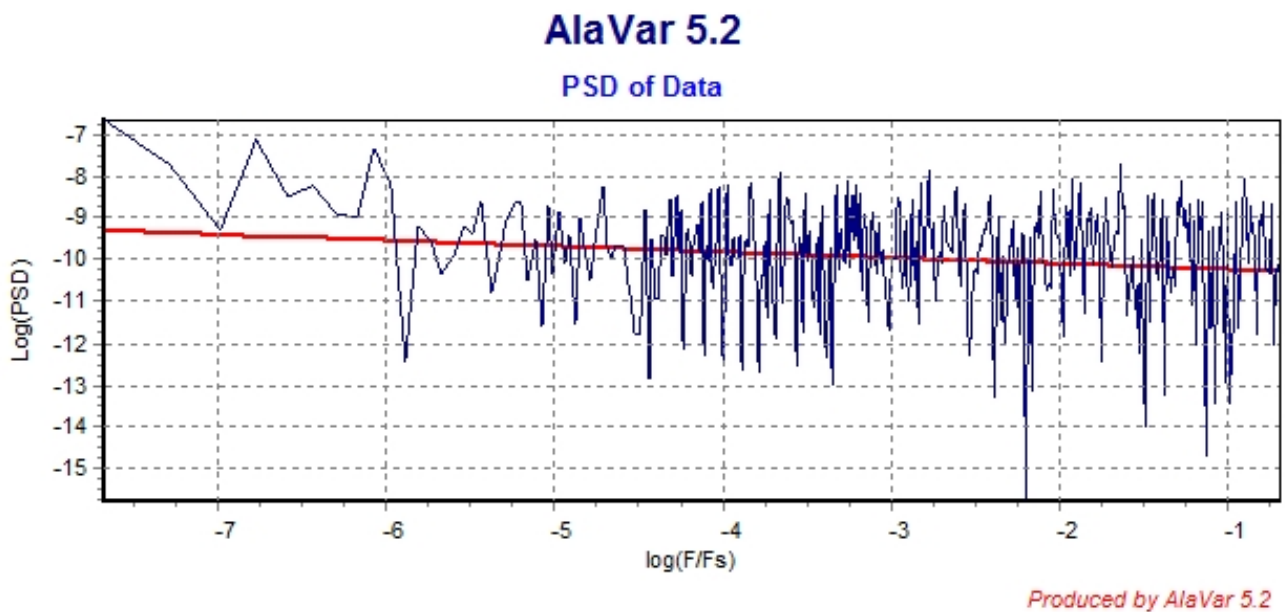


Figure 2 : Data PSD

The computation of the 3 ALLAN STD DEVs lasted 0.014000 seconds
 The error bars were computed for a : White FM
 The computation of the Error bars lasted 0.001 seconds

ADEV(tau) was fitted to a line :
 The Solpe of the line is =-0.512553
 The fit result is ADEV(tau=1) = Stability =0.299544

Tau = average Time
 ADEV = Overlapping ALLAN STD DEV.
 ADEV_Min = ADEV lower bound.
 ADEV_Max = ADEV upper bound.
 MDEV = Modified ALLAN STD DEV.
 TDEV = Time ALLAN STD DEV.
 HDEV = Overlapping HADAMARD STD DEV.

Tau	ADEV	ADEV_Min	ADEV_Max	MDEV	TDEV	HDEV
0.25	0.60583	0.59801	0.61397	0.60583	0.087445	0.60527
0.5	0.42862	0.42265	0.43485	0.33802	0.097578	0.42888
1	0.30241	0.29704	0.30808	0.21969	0.12684	0.30405
2	0.20752	0.20251	0.21293	0.14717	0.16994	0.20647
4	0.14922	0.14422	0.15478	0.10462	0.2416	0.14989
8	0.10232	0.09757	0.10783	0.07229	0.33389	0.10185
16	0.075849	0.070996	0.081855	0.055446	0.51219	0.074656
32	0.059409	0.054204	0.066472	0.045177	0.83465	0.05305
64	0.049901	0.043961	0.059153	0.031783	1.1744	0.044523
128	0.036859	0.030936	0.048349	0.029018	2.1445	0.035392
256	0.04021	0.031513	0.065619	0.031718	4.688	0.02029

CALLISTO eC169, 24.08.2022

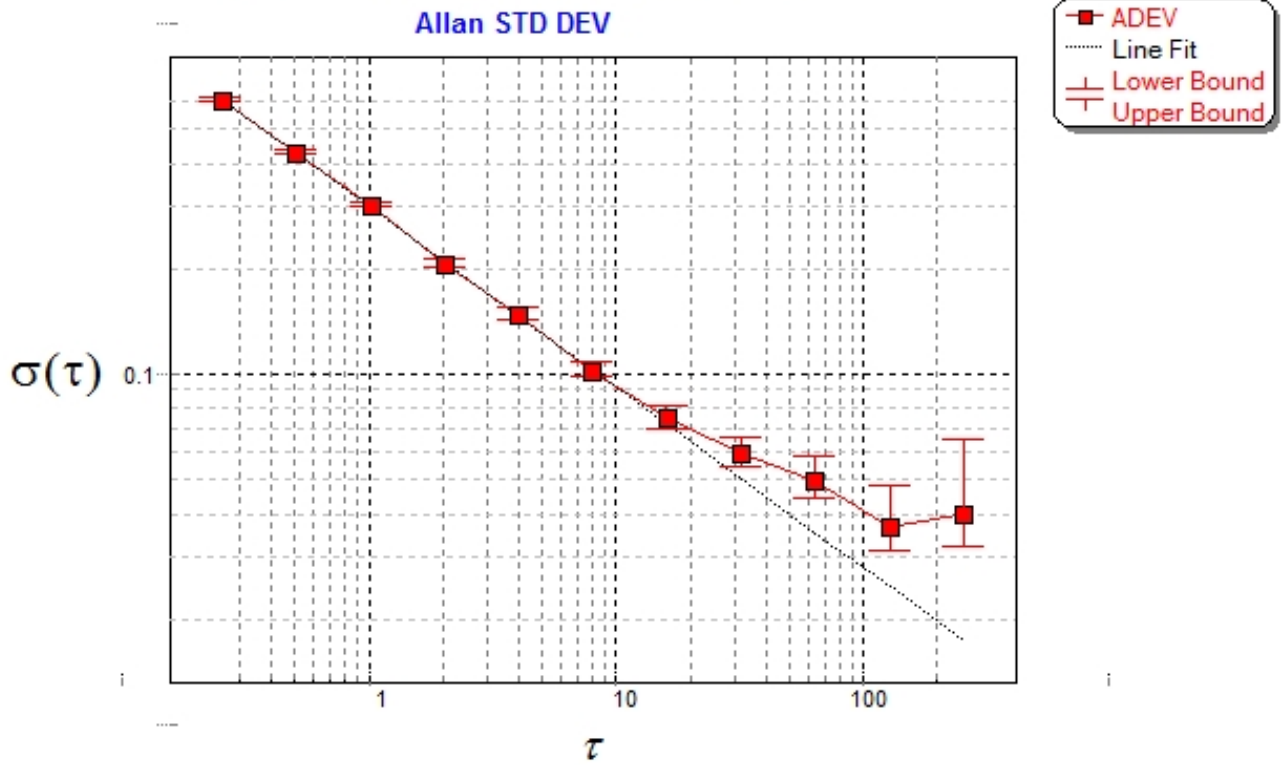


Figure 3 : Allan Standard Deviation