

# AlaVar generated report

C:\CALLISTO-01\FITfiles\TotalLightcurve.DAT

File 'C:\CALLISTO-01\FITfiles\TotalLightcurve.DAT' created on 29.07.2022 17:18:16

Column # 1 was processed

Data length N = 5400 points.

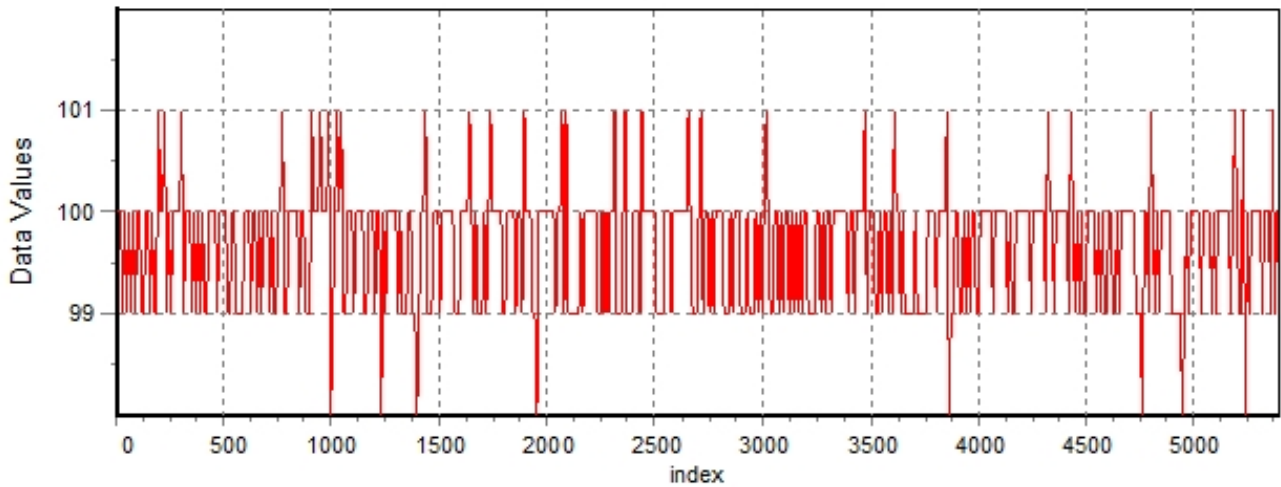
The mean Value of the processed data = 99.5881

The Stanardr Deviation of the processed data = 2.41898

The number of removed outliers is 3

## AlaVar 5.2

### Data Values

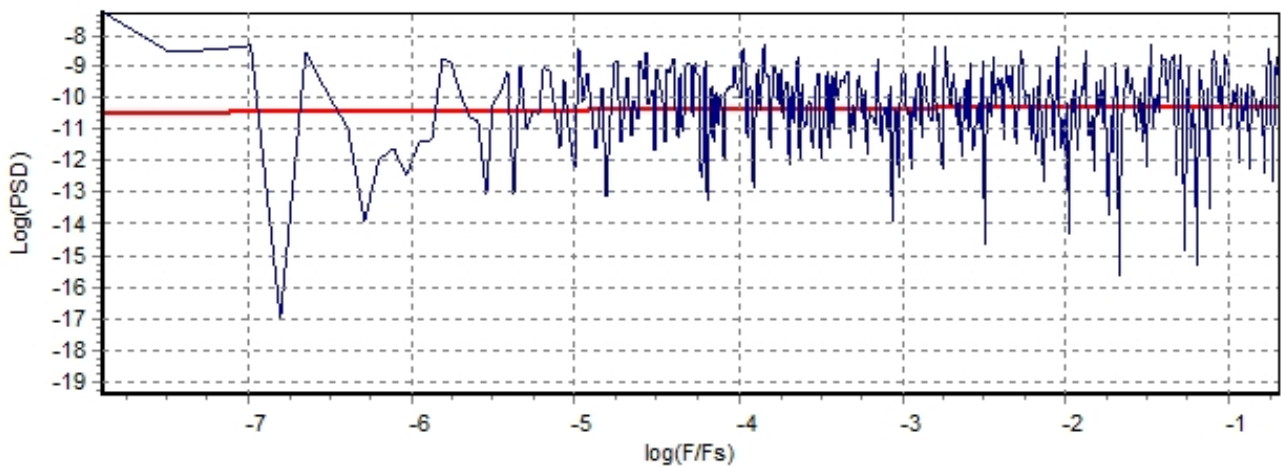


*Produced by AlaVar 5.2*

Figure 1 : Processed Data

## AlaVar 5.2

### PSD of Data



*Produced by AlaVar 5.2*

Figure 2 : Data PSD

The computation of the 3 ALLAN STD DEVs lasted 0.013000 seconds  
 The error bars were computed for a : White FM  
 The computation of the Error bars lasted 0.001 seconds

ADEV(tau) was fitted to a line :  
 The Solpe of the line is =-0.503526  
 The fit result is ADEV(tau=1) = Stability =0.289599

Tau = average Time  
 ADEV = Overlapping ALLAN STD DEV.  
 ADEV\_Min = ADEV lower bound.  
 ADEV\_Max = ADEV upper bound.  
 MDEV = Modified ALLAN STD DEV.  
 TDEV = Time ALLAN STD DEV.  
 HDEV = Overlapping HADAMARD STD DEV.

Tau	ADEV	ADEV_Min	ADEV_Max	MDEV	TDEV	HDEV
0.25	0.57564	0.56896	0.58255	0.57564	0.083086	0.57424
0.5	0.41436	0.40918	0.41974	0.3297	0.095175	0.41359
1	0.29456	0.28986	0.29949	0.21412	0.12362	0.29671
2	0.20095	0.19658	0.20562	0.1417	0.16362	0.20101
4	0.14242	0.13812	0.14714	0.10117	0.23365	0.14142
8	0.10422	0.099856	0.1092	0.074229	0.34285	0.1048
16	0.070837	0.066741	0.075793	0.048986	0.45251	0.071759
32	0.047907	0.044105	0.052899	0.033104	0.6116	0.047926
64	0.035228	0.031419	0.040869	0.026863	0.99261	0.03082
128	0.031902	0.027238	0.040235	0.023505	1.737	0.030647
256	0.025846	0.020758	0.038452	0.017825	2.6346	0.019265

### CALLISTO eC163, 2022-07-29

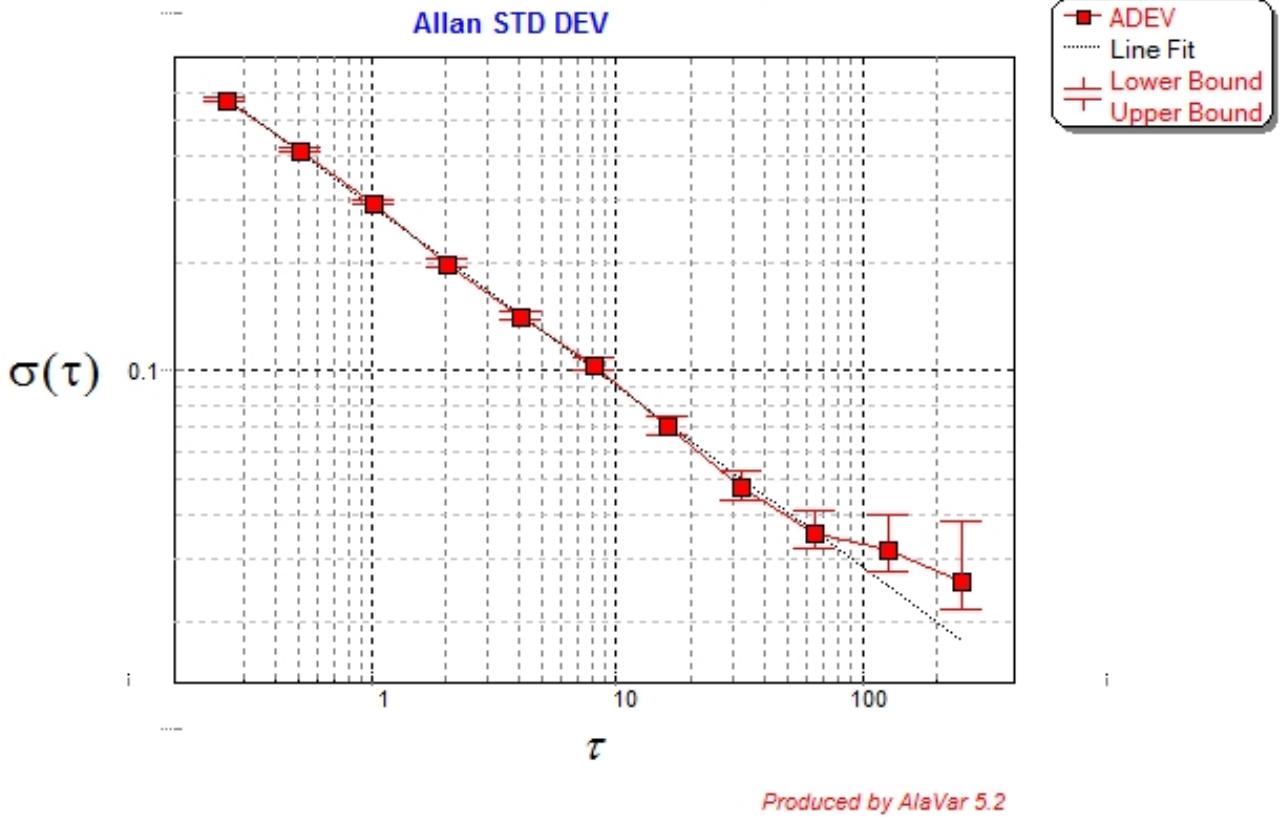


Figure 3 : Allan Standard Deviation