

# AlaVar generated report

C:\CALLISTO-01\FITfiles\TotalLightcurve.DAT

File 'C:\CALLISTO-01\FITfiles\TotalLightcurve.DAT' created on 28.06.2022 16:29:40

Column # 1 was processed

Data length N = 18329 points.

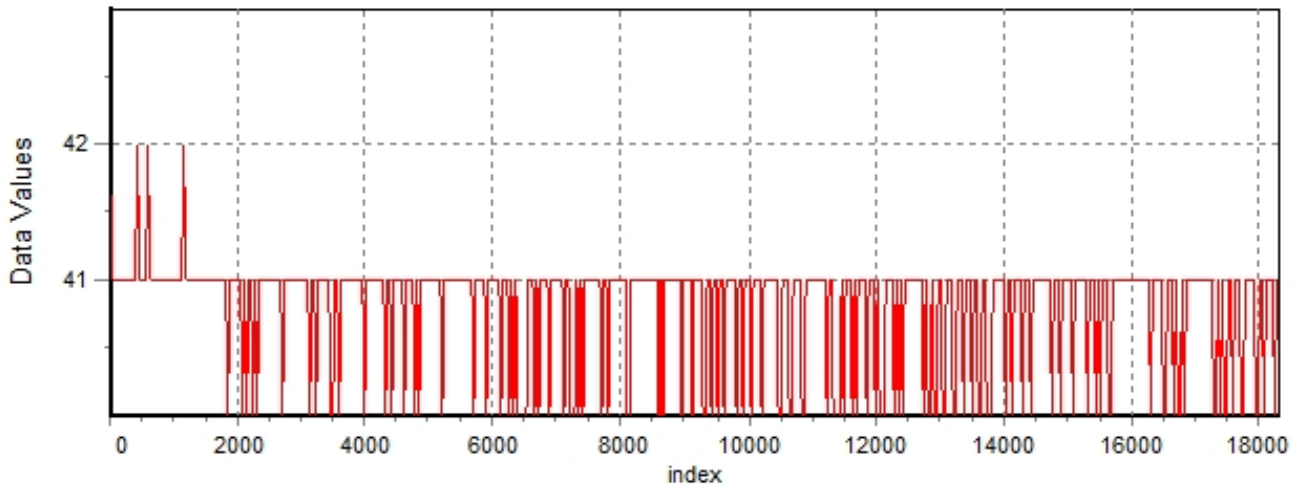
The mean Value of the processed data = 40.7754

The Stanadrd Deviation of the processed data = 1.0949

The number of removed outliers is 11

## AlaVar 5.2

### Data Values

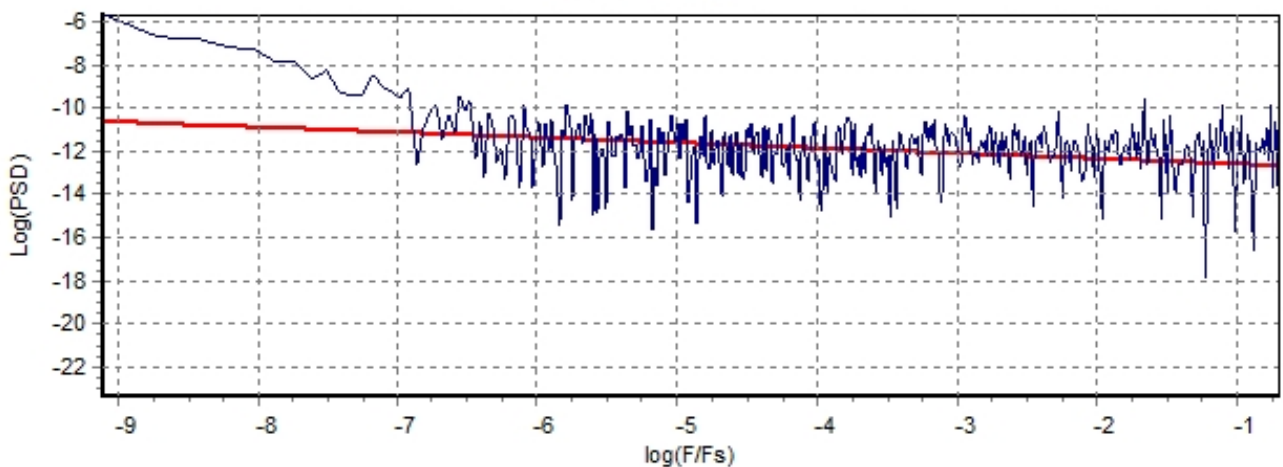


*Produced by AlaVar 5.2*

Figure 1 : Processed Data

## AlaVar 5.2

### PSD of Data



*Produced by AlaVar 5.2*

Figure 2 : Data PSD

The computation of the 3 ALLAN STD DEVS lasted 0.207000 seconds  
 The error bars were computed for a : White FM  
 The computation of the Error bars lasted 0 seconds

ADEV(tau) was fitted to a line :  
 The Solpe of the line is =-0.4782  
 The fit result is ADEV(tau=1) = Stability =0.213807

Tau = average Time  
 ADEV = Overlapping ALLAN STD DEV.  
 ADEV\_Min = ADEV lower bound.  
 ADEV\_Max = ADEV upper bound.  
 MDEV = Modified ALLAN STD DEV.  
 TDEV = Time ALLAN STD DEV.  
 HDEV = Overlapping HADAMARD STD DEV.

Tau	ADEV	ADEV_Min	ADEV_Max	MDEV	TDEV	HDEV
0.25	0.42423	0.42154	0.42697	0.42423	0.061232	0.42425
0.5	0.29886	0.29682	0.30095	0.23556	0.067999	0.2995
1	0.20995	0.20812	0.21184	0.15323	0.088466	0.20916
2	0.15089	0.14908	0.15277	0.10788	0.12456	0.15078
4	0.10854	0.10672	0.11044	0.078726	0.18181	0.1075
8	0.079351	0.077499	0.081342	0.056421	0.2606	0.079308
16	0.05801	0.056122	0.060102	0.042946	0.39672	0.05635
32	0.046743	0.044631	0.049187	0.035061	0.64776	0.044793
64	0.039131	0.036691	0.042134	0.031214	1.1534	0.034381
128	0.039857	0.036451	0.044439	0.030371	2.2444	0.027998
256	0.046737	0.041306	0.055083	0.033521	4.9545	0.025008
512	0.047163	0.039762	0.061205	0.029191	8.6288	0.022155
1024	0.05344	0.042152	0.084939	0.033248	19.657	0.037821

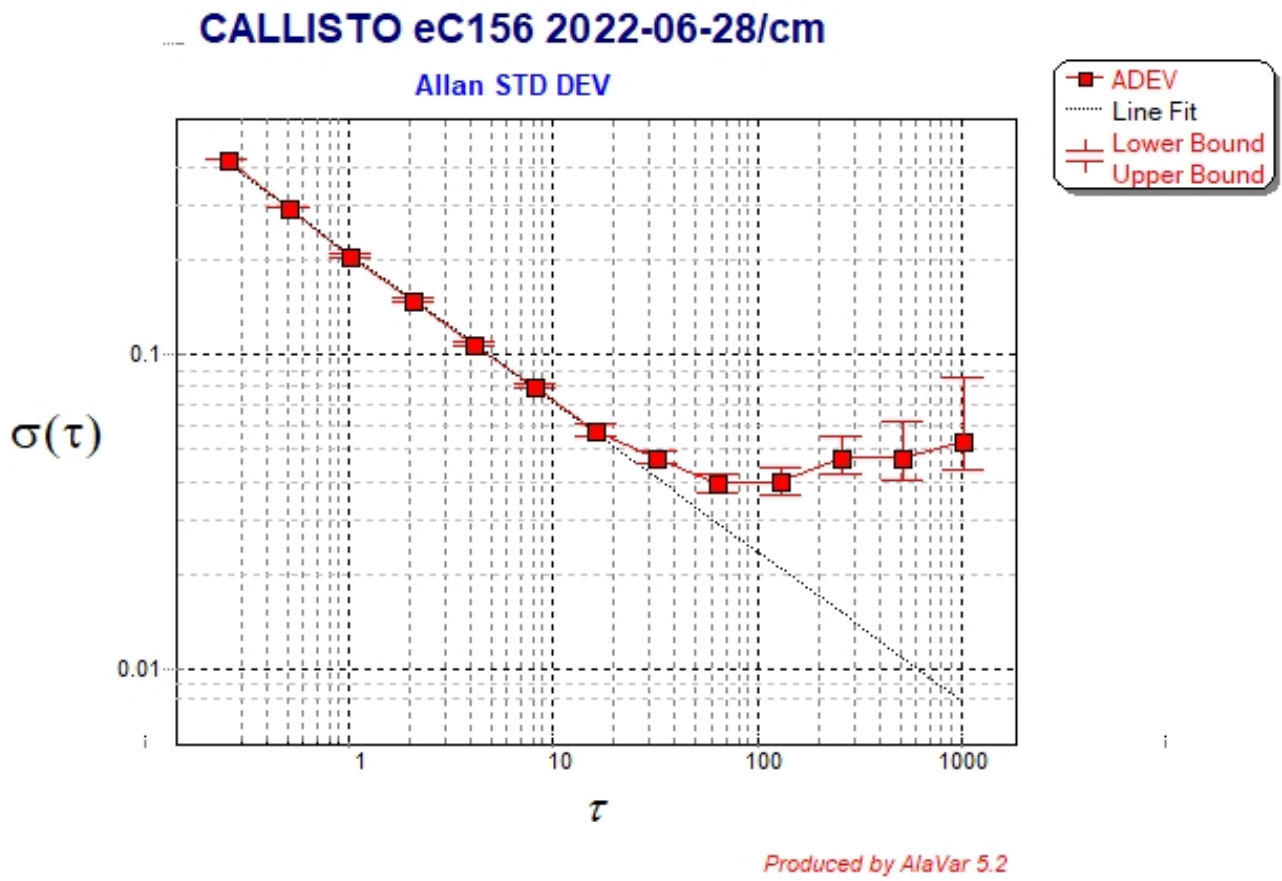


Figure 3 : Allan Standard Deviation