

AlaVar generated report

C:\temp\Data\LC100EC108.dat

File 'C:\temp\Data\LC100EC108.dat' created on 11.04.2018 06:43:06

Column # 1 was processed

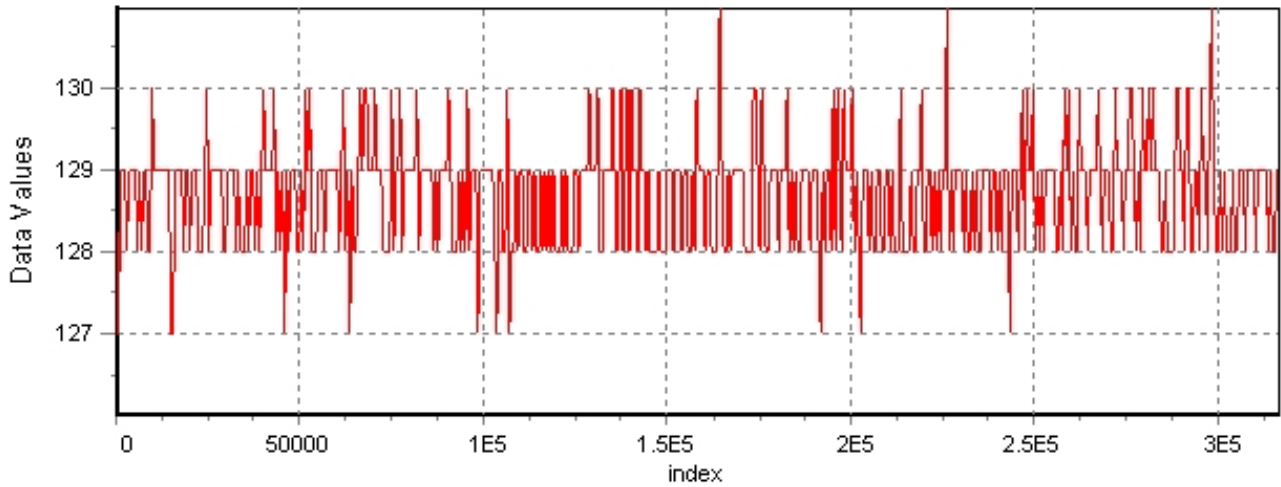
Data length N = 316789 points.

The mean Value of the processed data = 128.738

The Stanardr Deviation of the processed data = 0.65298

AlaVar 5.2

Data Values

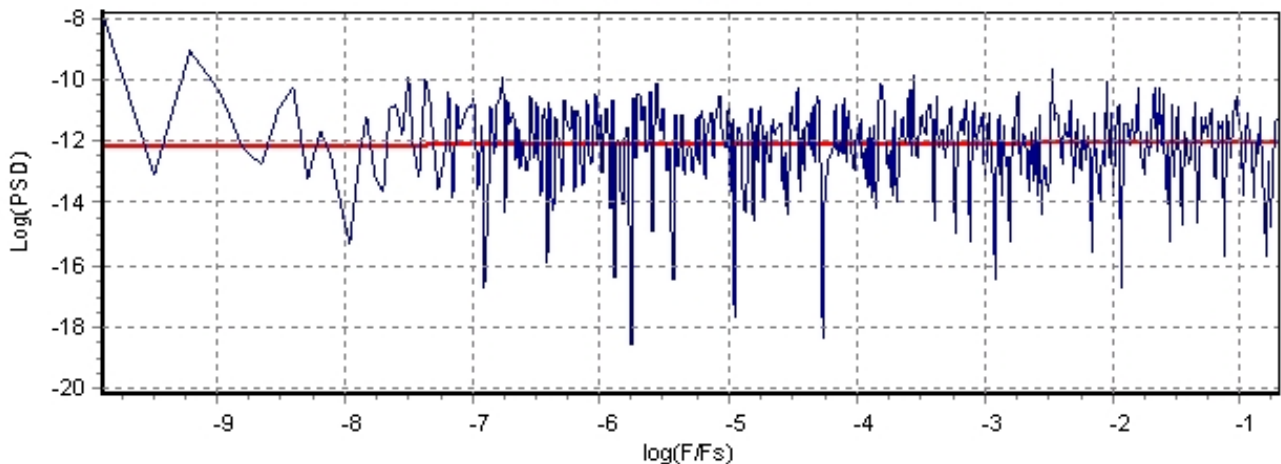


Produced by AlaVar 5.2

Figure 1 : Processed Data

AlaVar 5.2

PSD of Data



Produced by AlaVar 5.2

Figure 2 : Data PSD

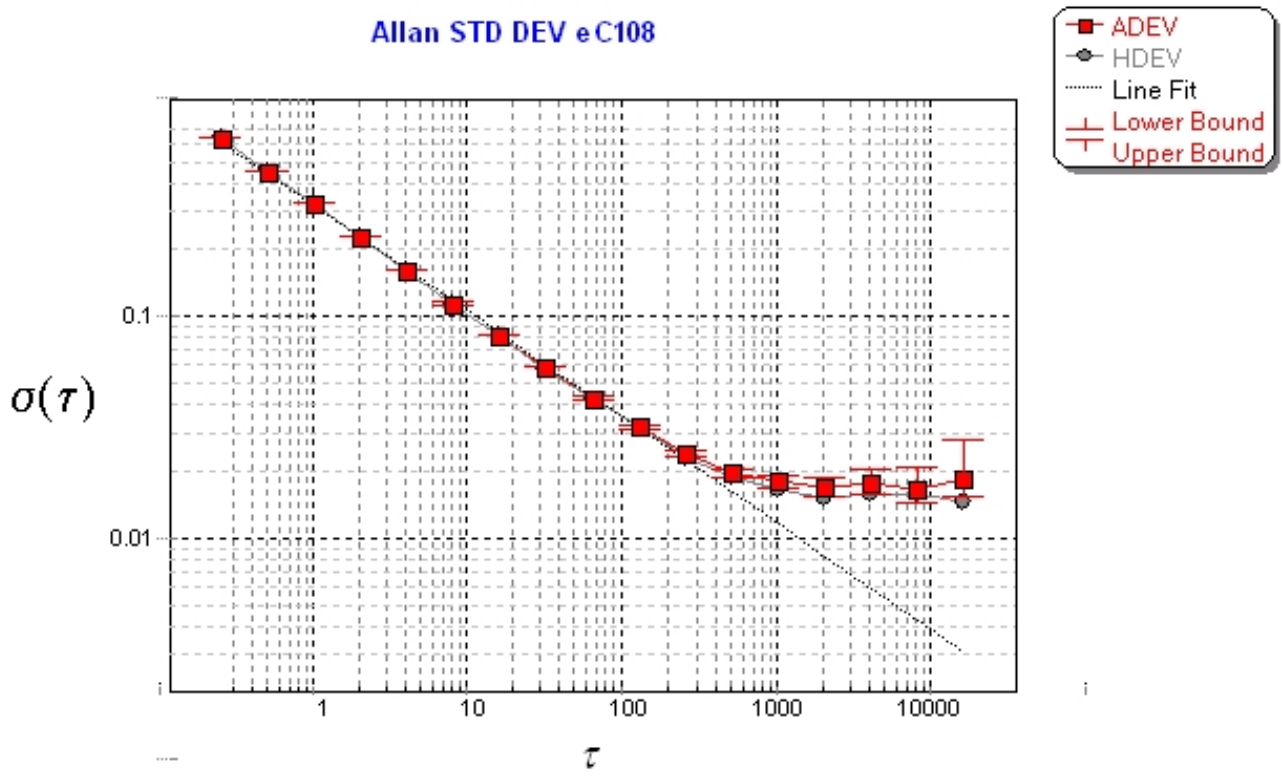
The computation of the 3 ALLAN STD DEVs lasted 0.563000 seconds
 The error bars were computed for a : White FM
 The computation of the Error bars lasted 0 seconds

ADEV(tau) was fitted to a line :
 The Solpe of the line is =-0.480287
 The fit result is ADEV(tau=1) = Stability =0.323802

Tau = average Time
 ADEV = Overlapping ALLAN STD DEV.
 ADEV_Min = ADEV lower bound.
 ADEV_Max = ADEV upper bound.
 MDEV = Modified ALLAN STD DEV.
 TDEV = Time ALLAN STD DEV.
 HDEV = Overlapping HADAMARD STD DEV.

Tau	ADEV	ADEV_Min	ADEV_Max	MDEV	TDEV	HDEV
0.25	0.65086	0.64986	0.65187	0.65086	0.093944	0.65073
0.5	0.46075	0.45999	0.46152	0.36447	0.10521	0.4604
1	0.32716	0.32646	0.32786	0.23878	0.13786	0.32713
2	0.23129	0.23061	0.23197	0.16489	0.1904	0.23131
4	0.16359	0.16292	0.16427	0.11592	0.2677	0.1636
8	0.11554	0.11487	0.11622	0.081723	0.37746	0.11545
16	0.082027	0.081361	0.082709	0.058224	0.53785	0.081765
32	0.059047	0.058372	0.059745	0.042197	0.77961	0.058804
64	0.043044	0.042354	0.043769	0.03122	1.1536	0.042477
128	0.032122	0.0314	0.032895	0.023254	1.7185	0.031789
256	0.024193	0.023435	0.025031	0.017937	2.6511	0.023279
512	0.01994	0.019071	0.020939	0.01543	4.561	0.018786
1024	0.018133	0.017042	0.019465	0.014384	8.5042	0.016621
2048	0.016972	0.015572	0.018834	0.014046	16.609	0.015222
4096	0.017739	0.015747	0.020746	0.013727	32.463	0.015771
8192	0.016619	0.014097	0.021266	0.014081	66.601	0.015832
16384	0.018476	0.014702	0.028403	0.013539	128.07	0.01443

AlaVar 5.2 Allan STD DEV eC108



Produced by AlaVar 5.2

Figure 3 : Allan Standard Deviation