

# AlaVar generated report

C:\CALLISTO-01\FITfiles\TotalLightcurve.DAT

File 'C:\CALLISTO-01\FITfiles\TotalLightcurve.DAT' created on 30.01.2021 22:02:56

Column # 1 was processed

Data length N = 29761 points.

The mean Value of the processed data = 124.68

The Stanadrd Deviation of the processed data = 3.04977

The number of removed outliers is 17

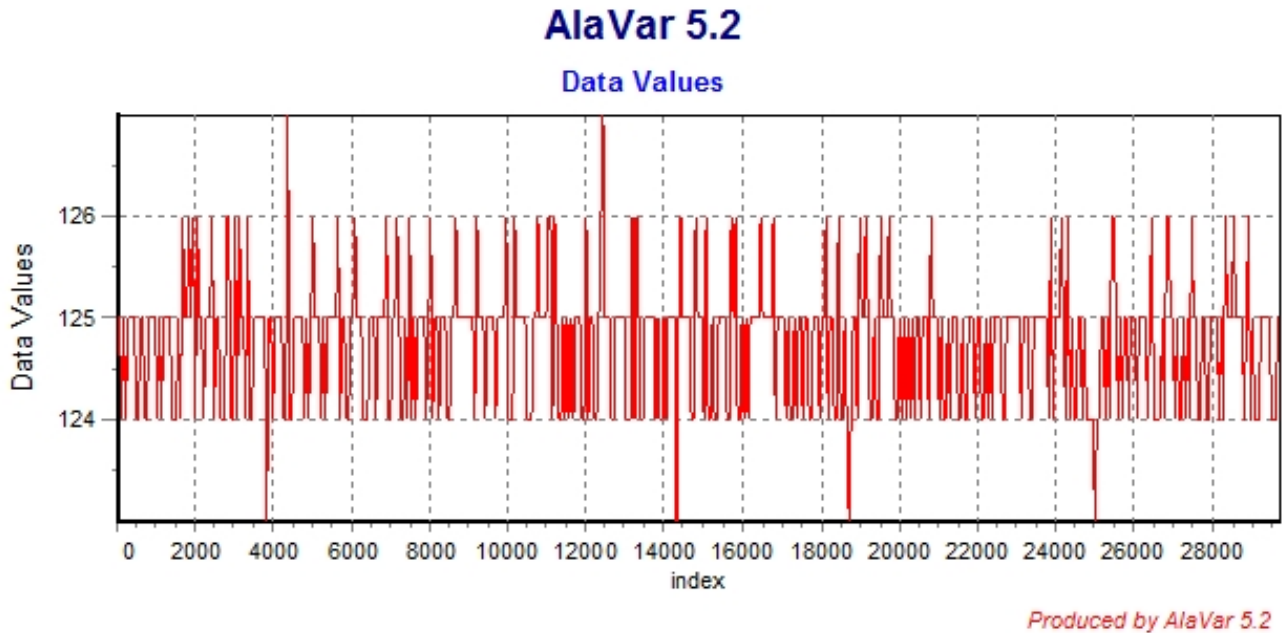


Figure 1 : Processed Data

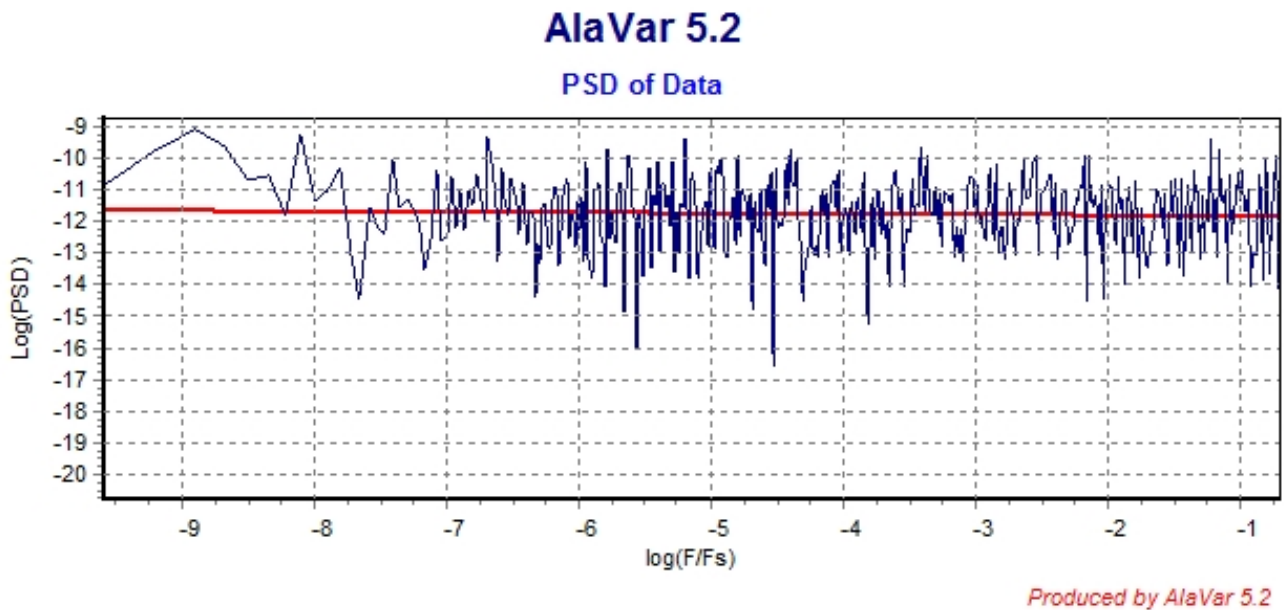


Figure 2 : Data PSD

The computation of the 3 ALLAN STD DEVS lasted 0.234000 seconds  
 The error bars were computed for a : White FM  
 The computation of the Error bars lasted 0 seconds

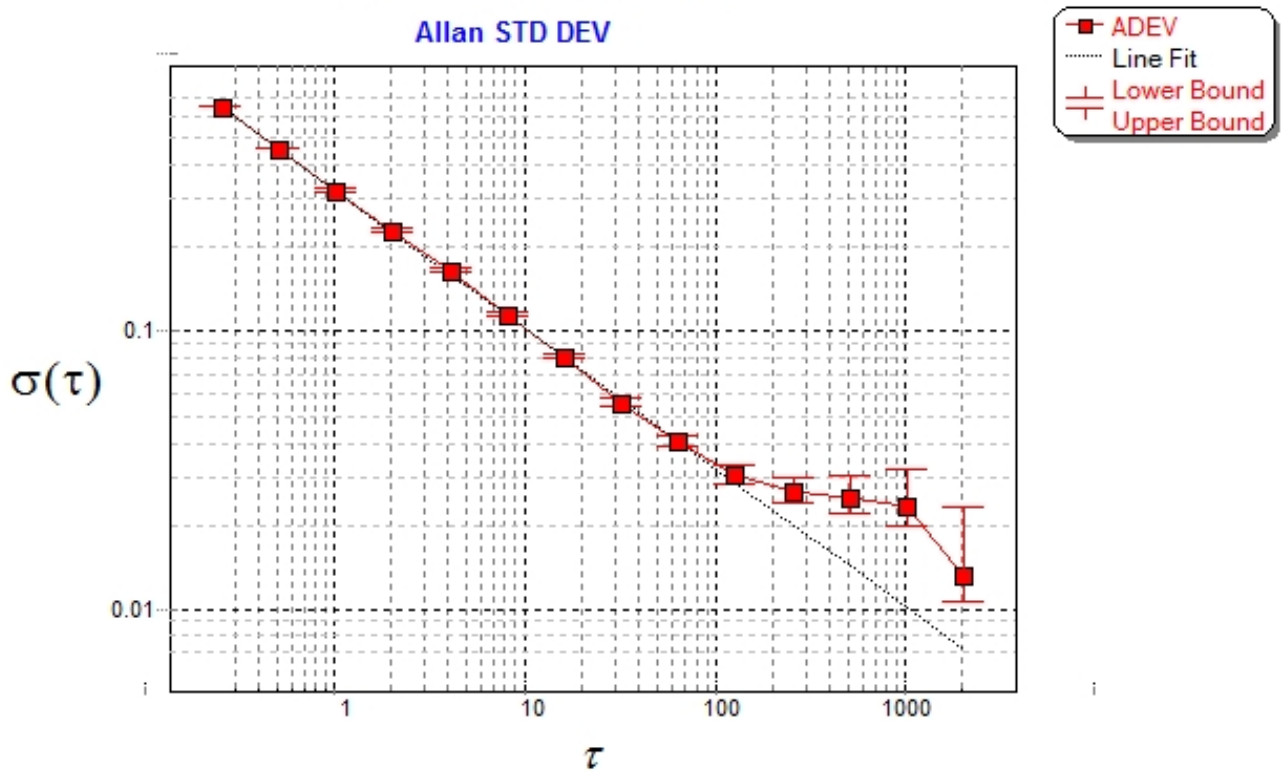
ADEV(tau) was fitted to a line :  
 The Solpe of the line is =-0.5  
 The fit result is ADEV(tau=1) = Stability =0.321855

Tau = average Time  
 ADEV = Overlapping ALLAN STD DEV.  
 ADEV\_Min = ADEV lower bound.  
 ADEV\_Max = ADEV upper bound.  
 MDEV = Modified ALLAN STD DEV.  
 TDEV = Time ALLAN STD DEV.  
 HDEV = Overlapping HADAMARD STD DEV.

Tau	ADEV	ADEV_Min	ADEV_Max	MDEV	TDEV	HDEV
0.25	0.64339	0.64018	0.64664	0.64339	0.092865	0.64344
0.5	0.45472	0.45227	0.45721	0.35936	0.10374	0.45467
1	0.32328	0.32105	0.32555	0.2366	0.1366	0.32271
2	0.2308	0.22862	0.23304	0.16561	0.19122	0.23015
4	0.16495	0.16278	0.16722	0.11709	0.27042	0.16566
8	0.11478	0.11267	0.11703	0.080731	0.37288	0.11541
16	0.080272	0.078202	0.082517	0.056707	0.52383	0.080797
32	0.05475	0.052782	0.056955	0.038036	0.70272	0.054754
64	0.039853	0.037868	0.042187	0.029221	1.0797	0.03871
128	0.03043	0.028342	0.03306	0.022018	1.6272	0.029497
256	0.026284	0.023818	0.029716	0.021418	3.1657	0.023676
512	0.025123	0.021926	0.030303	0.019883	5.8776	0.02398
1024	0.023422	0.019403	0.031762	0.016447	9.7235	0.023877
2048	0.013044	0.010031	0.023254	0.011911	14.083	0.013243

### Alan Variance eC133

Allan STD DEV



Produced by AlaVar 5.2

Figure 3 : Allan Standard Deviation