

# AlaVar generated report

C:\CALLISTO-01\FITfiles\TotalLightCurve100.prn

File 'C:\CALLISTO-01\FITfiles\TotalLightCurve100.prn' created on 14.03.2019 20:35:52

Column # 1 was processed

Data length N = 4950 points.

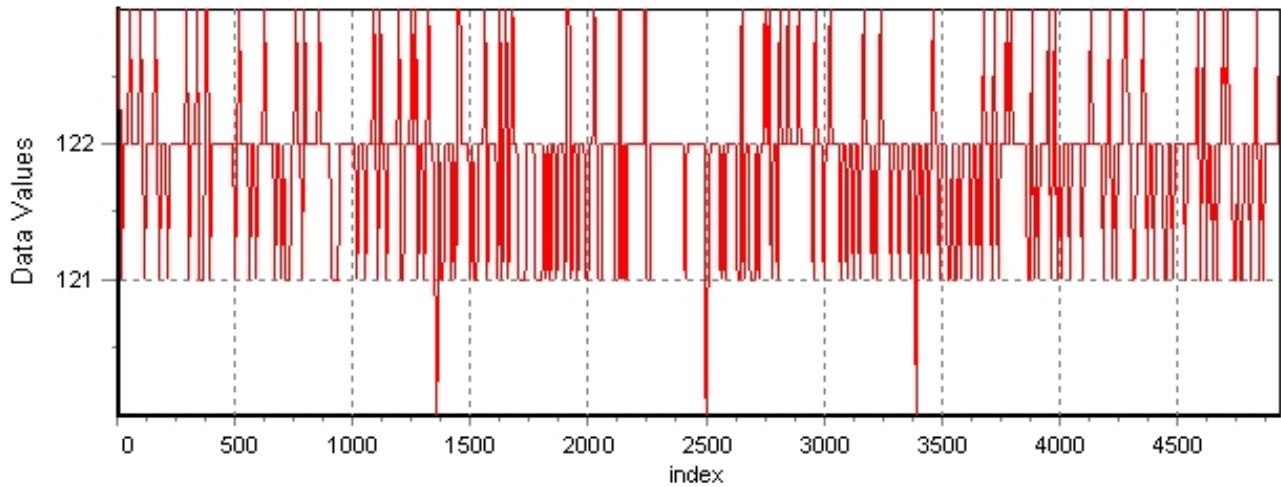
The mean Value of the processed data = 121.582

The Stanardr Deviation of the processed data = 5.76785

The number of removed outliers is 11

## AlaVar 5.2

### Data Values

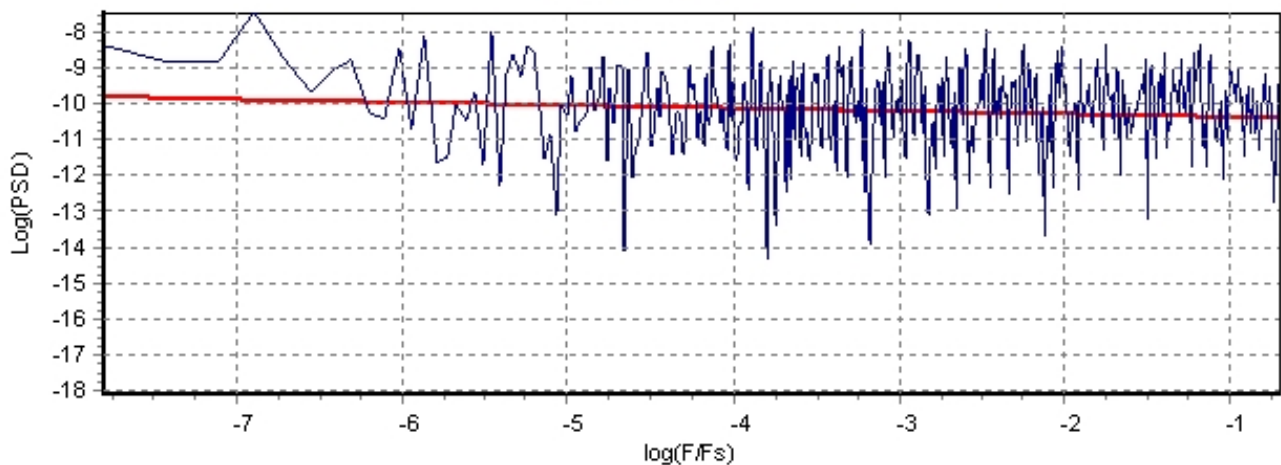


*Produced by AlaVar 5.2*

Figure 1 : Processed Data

## AlaVar 5.2

### PSD of Data



*Produced by AlaVar 5.2*

Figure 2 : Data PSD

The computation of the 3 ALLAN STD DEVs lasted 0.110000 seconds  
 The error bars were computed for a : White FM  
 The computation of the Error bars lasted 0 seconds

ADEV(tau) was fitted to a line :  
 The Solpe of the line is =-0.51114  
 The fit result is ADEV(tau=1) = Stability =0.288328

Tau = average Time  
 ADEV = Overlapping ALLAN STD DEV.  
 ADEV\_Min = ADEV lower bound.  
 ADEV\_Max = ADEV upper bound.  
 MDEV = Modified ALLAN STD DEV.  
 TDEV = Time ALLAN STD DEV.  
 HDEV = Overlapping HADAMARD STD DEV.

Tau	ADEV	ADEV_Min	ADEV_Max	MDEV	TDEV	HDEV
0.25	0.58137	0.57433	0.58867	0.58137	0.083914	0.58236
0.5	0.4096	0.40425	0.41517	0.32432	0.093624	0.40892
1	0.2929	0.28802	0.29804	0.21408	0.1236	0.29301
2	0.20527	0.20061	0.21027	0.14468	0.16706	0.20724
4	0.13818	0.13383	0.14298	0.097072	0.22418	0.13764
8	0.10032	0.095946	0.10536	0.071298	0.32931	0.098861
16	0.074806	0.0703	0.080307	0.054423	0.50274	0.072965
32	0.055287	0.05072	0.06136	0.040256	0.74373	0.053276
64	0.046099	0.040917	0.053925	0.036531	1.3499	0.041507
128	0.045655	0.038721	0.058442	0.032667	2.4141	0.046521
256	0.025499	0.020285	0.039233	0.0088188	1.3034	0.02485

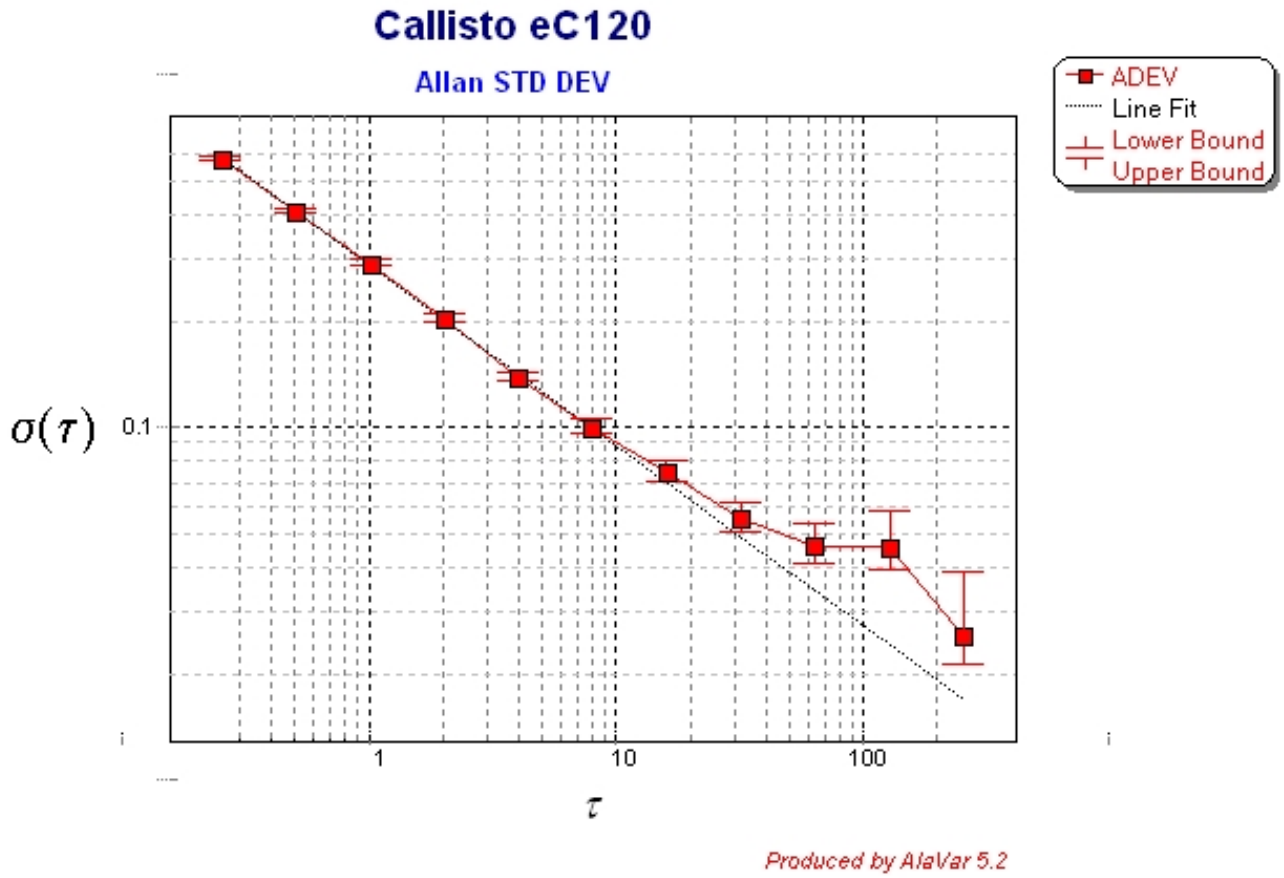


Figure 3 : Allan Standard Deviation