

AlaVar generated report

C:\CALLISTO-01\FITfiles\TotalLightCurve100.prn

File 'C:\CALLISTO-01\FITfiles\TotalLightCurve100.prn' created on 25.11.2018 17:36:24

Column # 1 was processed

Data length N = 63000 points.

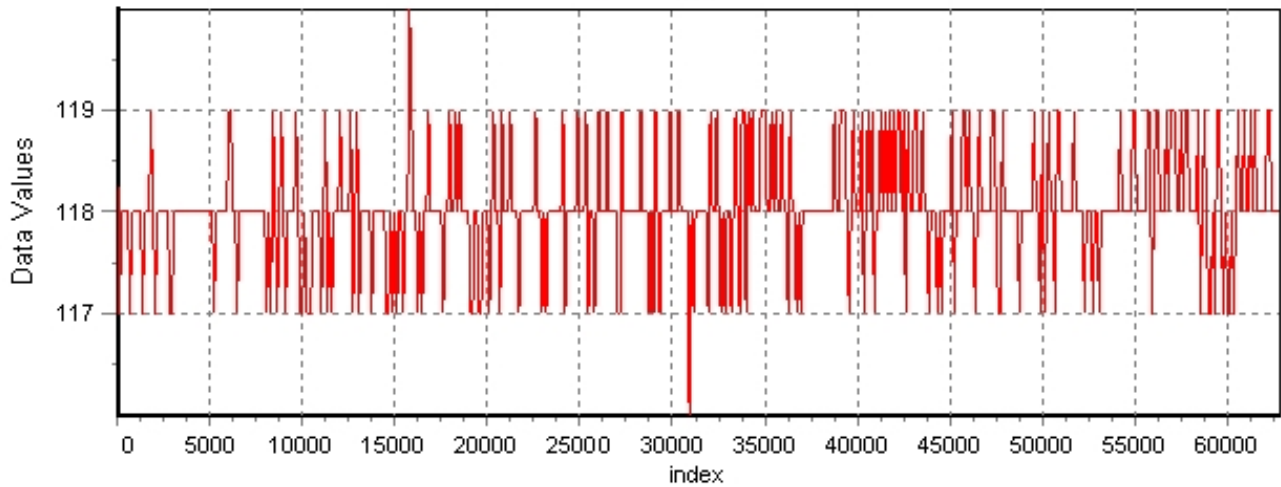
The mean Value of the processed data = 117.75

The Stanadrd Deviation of the processed data = 5.58785

The number of removed outliers is 140

AlaVar 5.2

Data Values

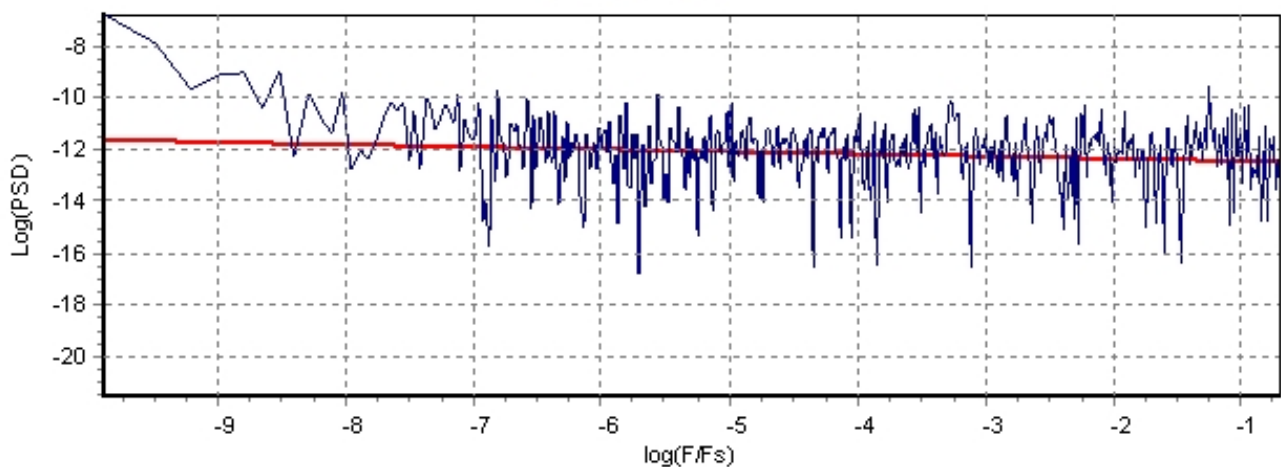


Produced by AlaVar 5.2

Figure 1 : Processed Data

AlaVar 5.2

PSD of Data



Produced by AlaVar 5.2

Figure 2 : Data PSD

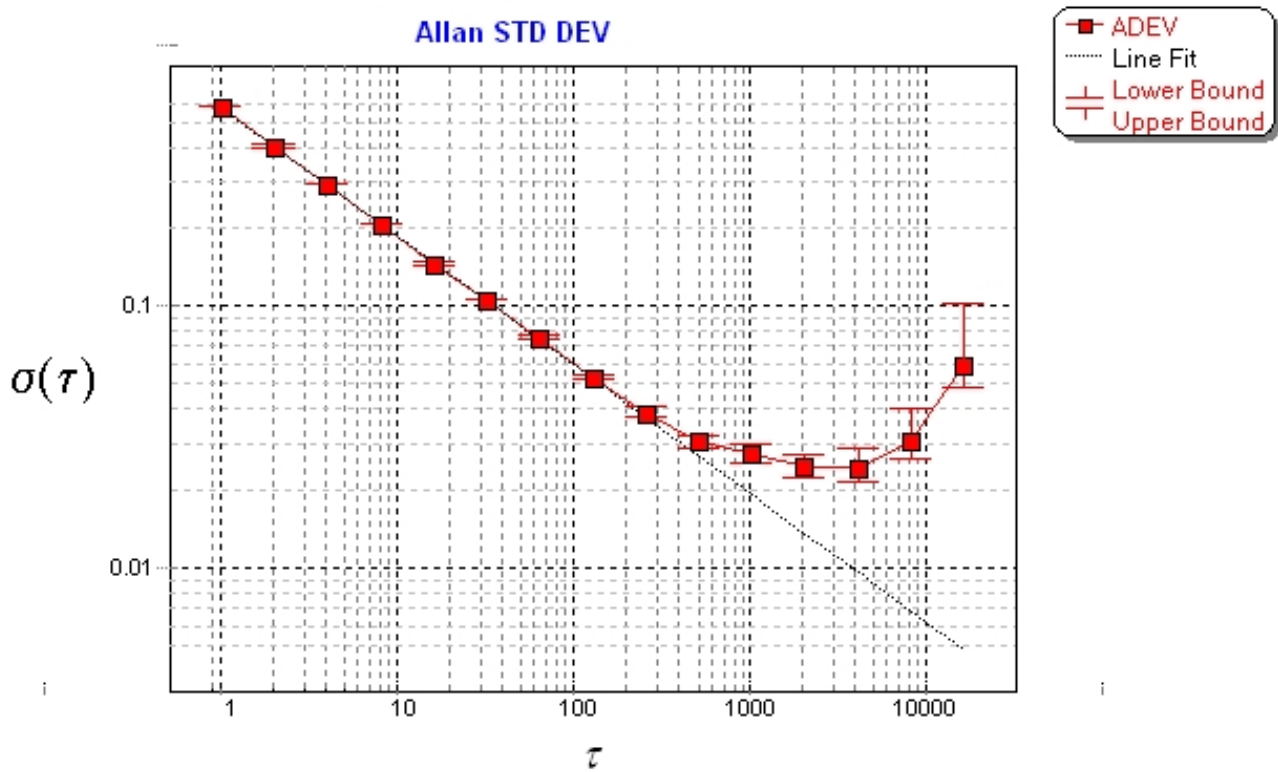
The computation of the 3 ALLAN STD DEVs lasted 0.160000 seconds
 The error bars were computed for a : White FM
 The computation of the Error bars lasted 0 seconds

ADEV(tau) was fitted to a line :
 The Slope of the line is =-0.493209
 The fit result is ADEV(tau=1) = Stability =0.576775

Tau = average Time
 ADEV = Overlapping ALLAN STD DEV.
 ADEV_Min = ADEV lower bound.
 ADEV_Max = ADEV upper bound.
 MDEV = Modified ALLAN STD DEV.
 TDEV = Time ALLAN STD DEV.
 HDEV = Overlapping HADAMARD STD DEV.

Tau	ADEV	ADEV_Min	ADEV_Max	MDEV	TDEV	HDEV
1	0.58023	0.57823	0.58225	0.58023	0.335	0.57948
2	0.41141	0.40988	0.41295	0.32485	0.3751	0.41155
4	0.29028	0.2889	0.29168	0.2115	0.48845	0.29019
8	0.20551	0.20417	0.20688	0.14648	0.67656	0.20574
16	0.1447	0.14338	0.14605	0.10274	0.94909	0.14403
32	0.10453	0.10319	0.10592	0.074619	1.3786	0.10397
64	0.075453	0.074098	0.076884	0.053548	1.9786	0.075808
128	0.052477	0.051159	0.053902	0.037249	2.7527	0.051932
256	0.038947	0.037583	0.04047	0.028127	4.1572	0.037849
512	0.030538	0.029055	0.032273	0.022908	6.7718	0.027369
1024	0.027234	0.025412	0.029514	0.019973	11.808	0.024623
2048	0.024199	0.021984	0.027253	0.019456	23.005	0.021703
4096	0.023762	0.02081	0.028476	0.020474	48.417	0.020598
8192	0.030038	0.025004	0.040223	0.030076	142.25	0.019119
16384	0.059117	0.04578	0.10179	0.065329	617.97	0.019428

CALLISTO eC113 Allan STD DEV



Produced by AlaVar 5.2

Figure 3 : Allan Standard Deviation