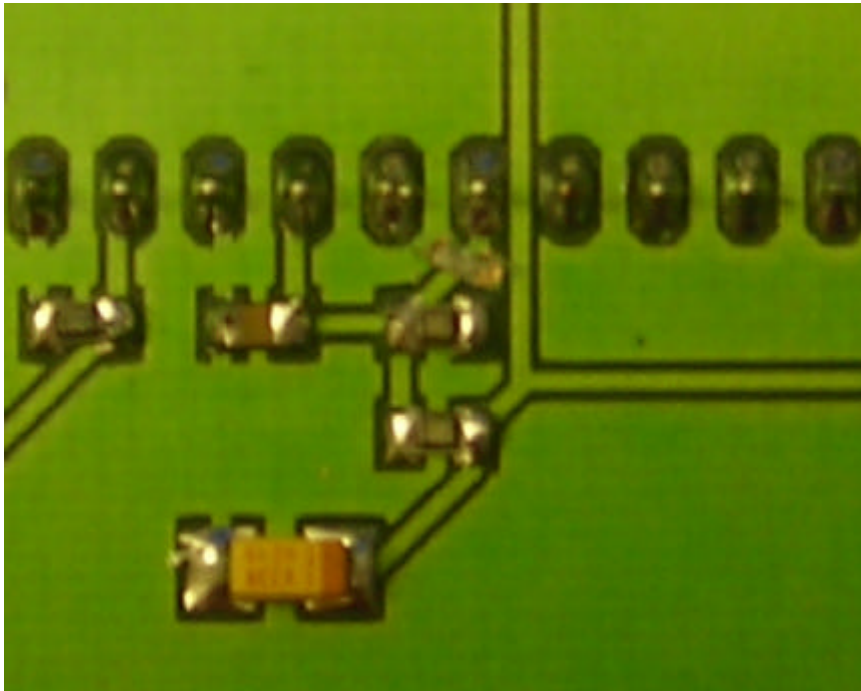


e-Callisto Non Conformance Report (NCR)

Regarding ADC reference voltage there is a fatal design error in the printed circuit board. Erroneously two different references have been connected to the input thus; a short circuit leads to a non working system.



Since we made use of external reference AREF on Pin 32, it is- according to specification- not allowed also to use AVCC on Pin 30.

In software we use `ADC_VREF_TYPE=0x00` which means:
AREF on Pin32 and internal Vref turned off.

Solution: scratch connection to Pin 30 using a scalpel or a sharp knife.

Decision: use PCB as it is, no redesign.